

General Information (Origin of Request)		
<input checked="" type="checkbox"/> User Requirements Document (URD) <input type="checkbox"/> User Detailed Functional Specification (UDFS) <input type="checkbox"/> User Handbook (UHB) <input type="checkbox"/> Other User Functional or Technical Documentation (SYS)		
<b>Request raised by:</b> Eurosystem	<b>Institute:</b> ECB	<b>Date raised:</b> September 2020
<b>Request title:</b> TIPS AS Technical Accounts :T2 impacts		<b>Request ref. no:</b> CSLD-0049-URD
<b>Request type:</b> common		
<b>1. Legal/business importance parameter:</b>	<b>2. Market implementation efforts parameter – Stakeholder impact:</b>	
<b>3. Operational impact:</b>	<b>4. Financial impact parameter:</b>	
<b>5. Functional/ Technical impact</b>	<b>6. Interoperability impact: yes (TIPS CR0033)</b>	
<b>Requestor Category:</b>	<b>Status:</b> Approved	

**Reason for change and expected benefits/business motivation:**

As a result of the introduction of TIPS pan European reachability measures, a new TIPS Account type will be available in CRDM: “TIPS AS Technical Account”.

This account type must be known to CLM as all TARGET accounts are propagated from CRDM to TIPS with their “account type” as an attribute. CLM checks that the attribute is in a list of known values.

There will be no restriction in T2 RTGS: there will be no check that the AS Settlement Procedure D is not used in T2 RTGS for the purposes of instant payments.

This change request should be approved or rejected in conjunction with TIPS CR TIPS.0033.URD.

---

**Description of requested change:**

TIPS CR33 defines a new account type in TIPS: TIPS AS Technical Account. This new account type needs to be known to CLM to ensure that the accounts are successfully propagated from CRDM to CLM.

The following are out of scope of this change request:

- Blocking of inter-service liquidity transfer from/to AS Technical Accounts in TIPS (this is already foreseen in TIPS CR33)
- Billing of ACH in TIPS invoices (covered in TIPS CR38)

---

**Submitted annexes / related documents:**

None

---

**Proposed wording for the Change request:**

The URD will be updated as follows:

<b>Id</b>	SHRD.UR.BDD.050
<b>Name</b>	Banking Group
<b>Description</b>	<p>This entity shall denote a Banking Group, allowing a number of Parties acting as Payment Banks <u>or Ancillary Systems</u> to be viewed collectively for certain business purposes, such as oversight and regulation. Payment Banks <u>and Ancillary Systems</u> within a Banking Group may be associated with more than one Central Bank.</p> <p><u>Mandatory attributes:</u></p> <ul style="list-style-type: none"> <li>• Banking Group Identifier (KEY) (for internal use only) The unique technical identifier of the Banking Group.</li> <li>• Banking Group Name The name of the Banking Group.</li> </ul> <p>Optional attributes: n/a</p>

<b>Id</b>	SHRD.UR.BDD.090
<b>Name</b>	Cash Account
<b>Description</b>	<p>This entity shall denote any cash account required by the Eurosystem Market Infrastructure Services. For certain Cash Account Types, the Account Owner may not have any other Cash Accounts.</p> <p><u>Mandatory attributes:</u></p> <ul style="list-style-type: none"> <li>• [...] <ul style="list-style-type: none"> <li>• <b>Cash Account Type</b> <ul style="list-style-type: none"> <li>[...]</li> <li>- For TIPS: <ul style="list-style-type: none"> <li>TIPS DCA,</li> <li>Dedicated Transit Account</li> <li><b>AS Technical Account</b></li> <li>[...]</li> </ul> </li> </ul> </li> </ul> </li> </ul> <p>[...]</p>

<b>Id</b>	CLM.UR.CLM.UI.030
<b>Name</b>	Query Available Liquidity in U2A mode
<b>Description</b>	<p>CLM shall provide the functionality to query, via GUI in U2A mode, the available liquidity on one, many or all accounts that a user is authorised to see through U2A interface. The user can query within his data scope, which</p>

is determined by the Party BIC and the MCA number (Party BICs and MCA numbers in case of a Central Bank as a user). In addition, the query shall allow the user to specify any combination of the following optional selection criteria.

Optional selection criteria:

- Either Party BIC or Party Name
- MCA Number
- Account Monitoring Group
- 

The query shall return all relevant information about available liquidity in CLM, RTGS, TIPS and T2S, including:

- Party BIC
- Party Name
- Balance on MCA
- Credit Line on MCA
- Balance on RTGS DCA
- Balance on TIPS DCA (and TIPS AS Technical Account)
- Balance on T2S DCA
- Balance on sub account(s)
- Value of the available collateral in T2S
- Value of the outstanding auto-collateralisation amount in T2S
- Aggregate amount of pending transactions (Debits and Credits) for RTGS and CLM
- Aggregated View on CLM

If the user selects a specific Account Monitoring Group, the query shall return details of the available liquidity on all accounts belonging to the Account Monitoring Group. Furthermore, if the user selects a group of accounts, the query shall return aggregated information about the available liquidity on all selected accounts.

<b>Id</b>	CLM.CB.UR.CLM.UI.010
<b>Name</b>	Query aggregated available liquidity in CLM for the whole banking community
<b>Description</b>	<p>CLM shall provide a functionality to query an aggregated view of all liquidity for the whole banking community with breakdown per CLM account holder and per account through U2A interface. The Central Bank user can query within his data scope/ banking community, which is determined by the Party BICs and MCA numbers.</p> <p>The query shall return all relevant information for the current business day including:</p> <ul style="list-style-type: none"> <li>• Party BIC</li> </ul>

- Party Name
- Balance on MCA
- Credit line on MCA
- Balance on RTGS DCA
- Balance on TIPS DCA (and TIPS AS Technical Account)
- Balance on T2S DCA
- Number of transactions on each account
- Pending transactions (debits and credits)
- Aggregated (overall available liquidity) in CLM

Addition of the following footnote to the three CLM URDs:

- a.) CLM.UR.CLM.LTSEN.020.030 (PROCESS INTER-SERVICE LIQUIDITY TRANSFER ORDER FROM CLM ACCOUNT TO T2S/RTGS/TIPS ACCOUNT),
- b.) CLM.UR.CLM.LTRCV.020.020 (PROCESS INTER-SERVICE LIQUIDITY TRANSFER ORDER FROM T2S/RTGS/TIPS ACCOUNT TO CLM ACCOUNT)
- c.) CLM.UR.CLM.LTDCA.020.020 (PROCESS LIQUIDITY TRANSFER ORDER BETWEEN TWO T2S/RTGS/TIPS ACCOUNTS IN DIFFERENT SETTLEMENT SERVICES)

Footnote: „CLM shall validate the account type for TIPS accounts only for not being a transit account.“

**UDFS**  
**CLM UDFS**

**3.4 Types of groups**

[..]

**Banking Group**

[..]

Only CBs have the visibility of the accounts and balances of accounts within the defined Banking Group. Payment Banks or Ancillary Systems belonging to the Banking Group are still limited to their own data scope (accounts).

[..]

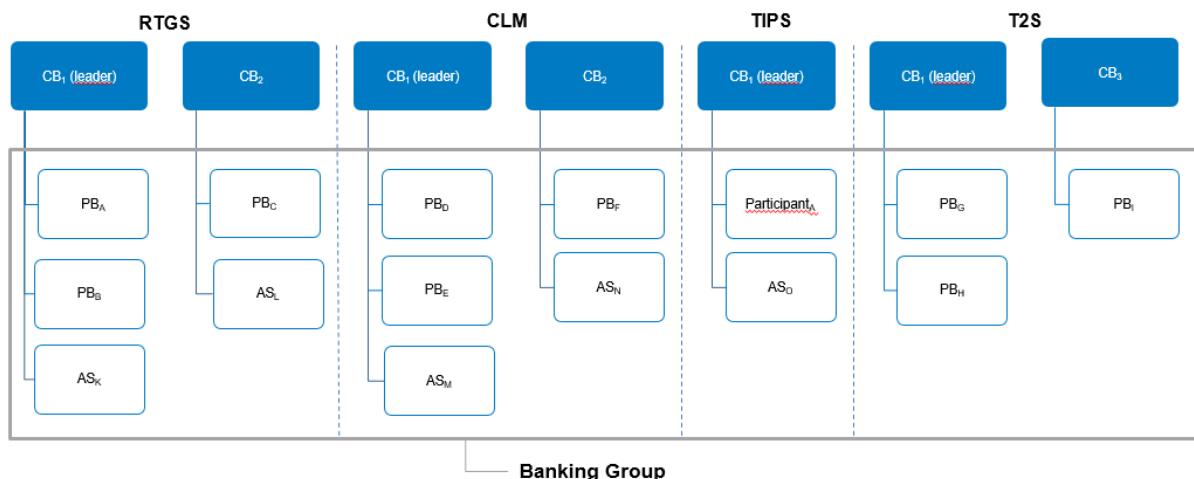


Figure 7 – Banking Group

[..]

**8.4.2 Content of TARGET Services general ledgers**

Settlement service	Account type
CLM	MCA
	CLM CB Account
	Overnight deposit account
	Marginal lending account
	CB ECB account
	ECB mirror account (ECB only)
	CLM dedicated transit accounts (ECB only <sup>1</sup> )
RTGS	RTGS DCA
	RTGS sub-account
	RTGS CB Account
	AS guarantee funds account
	AS technical account
	Dedicated transit account in RTGS (ECB only <sup>2</sup> )
TIPS	TIPS Account
	TIPS AS Technical Accounts
	Dedicated transit account in TIPS (ECB only <sup>3</sup> )
T2S <sup>4</sup>	T2S DCA
	T2S CB Account
	Dedicated transit account in T2S (ECB only <sup>5</sup> )

Table 1 - List of account types in the respective settlement service-specific general ledger

**Validation rule table updates to be provided after implementation**

**UHB**

<sup>1</sup> In case of the Euro.

<sup>2</sup> In case of the Euro.

<sup>3</sup> In case of the Euro.

<sup>4</sup> Functionality subject to the approval of a T2S CR.

<sup>5</sup> In case of the Euro.

### 5.6.3 Cash Account Reference Data – Query Screen

CASH ACCOUNT REFERENCE DATA – QUERY SCREEN – GENERAL	
Account Type	<p>This field offers the possibility to restrict the result list to cash accounts of a specific account type.</p> <p>Select one or more of the following values:</p> <ul style="list-style-type: none"><li><input type="checkbox"/> CB ECB account</li><li><input type="checkbox"/> CLM CB account</li><li><input type="checkbox"/> CLM Dedicated Transit Account for RTGS</li><li><input type="checkbox"/> CLM Dedicated Transit Account for T2S</li><li><input type="checkbox"/> CLM Dedicated Transit Account for TIPS</li><li><input type="checkbox"/> ECB Mirror Account</li><li><input type="checkbox"/> ECONS II Transit Account <sup>6</sup></li><li><input type="checkbox"/> Marginal Lending Account</li><li><input type="checkbox"/> MCA</li><li><input type="checkbox"/> Overnight Deposit Account</li><li><input type="checkbox"/> RTGS CB account</li><li><input type="checkbox"/> RTGS DCA</li><li><input type="checkbox"/> RTGS Sub-Account</li><li><input type="checkbox"/> TIPS Account</li><li><input type="checkbox"/> <b>TIPS AS Technical Account</b></li><li><input type="checkbox"/> T2S DCA</li><li><input type="checkbox"/> T2S CB Account</li></ul> <p>Default value: 'No filter selected'</p>

### 5.6.4 Cash Account Reference Data – List Screen

For cash accounts of the following account types, no context menu is enabled: 'CLM CB Account', 'Overnight Deposit Account', 'Marginal Lending Account', 'CLM Dedicated Transit Account', 'CB ECB Account', 'ECB Mirror Account', 'TIPS Account', '**TIPS AS Technical Account**' and 'MCA'.

---

<sup>6</sup> Not yet specified

### 5.1.1\_ Cash Transfers – Query Screen

CASH TRANSFERS – QUERY SCREEN – ACCOUNT SELECTION	
Account Type	<p>This field offers the possibility to restrict the result list to cash transfers of specific account types.</p> <p>This field and the fields 'Account BIC' and 'Account Number' are mutually exclusive.</p> <p>The value selected in this field is independent of the selection made in 'Credits / Debits'.</p> <p>Select one or more of the following values:</p> <ul style="list-style-type: none"> <li><input type="checkbox"/> CB ECB Account</li> <li><input type="checkbox"/> CLM CB Account</li> <li><input type="checkbox"/> ECB Mirror Account</li> <li><input type="checkbox"/> Marginal Lending Account</li> <li><input type="checkbox"/> MCA</li> <li><input type="checkbox"/> Overnight Deposit Account</li> <li><input type="checkbox"/> RTGS CB Account</li> <li><input type="checkbox"/> RTGS DCA</li> <li><input type="checkbox"/> RTGS Sub-Account</li> <li><input type="checkbox"/> TIPS Account</li> <li><input type="checkbox"/> <b>TIPS AS Technical Accounts</b></li> <li><input type="checkbox"/> T2S CB Account</li> <li><input type="checkbox"/> T2S DCA</li> </ul> <p>Default value: 'No filter selected'</p>

### 5.8.7 Available Liquidity by Party – List Screen

AVAILABLE LIQUIDITY BY PARTY – LIST SCREEN – RESULTS – LIST OF AVAILABLE LIQUIDITY BY PARTY	
TIPS Account Balances	<p>This column shows the sum of all TIPS account balances (TIPS Accounts and TIPS AS Technical Accounts) per party.</p>

**AVAILABLE LIQUIDITY BY PARTY – LIST SCREEN – RESULTS – LIST OF AVAILABLE LIQUIDITY BY PARTY**

It contains a sum of the amount of all listed liquidity positions at the bottom of the column.

**5.8.8 Available Liquidity by Account – List Screen**

**AVAILABLE LIQUIDITY BY ACCOUNT – LIST SCREEN – RESULTS – LIST OF AVAILABLE LIQUIDITY BY ACCOUNT**

TIPS Account Balances

This column shows the balance of the TIPS Account (which can be either a TIPS Account or a TIPS AS Technical Account).

**7.1.27 Liquidity Transfer – New Screen**

Reference for error message	Field or button	Error text	Description
U027	<ul style="list-style-type: none"> <li>  Field 'Account Number'</li> <li>  'Submit' Button</li> </ul>	Invalid credit account type	<p>The creditor account must be a valid account with the following account type:</p> <ul style="list-style-type: none"> <li>  Any CLM cash account</li> <li>  RTGS DCA, T2S DCA, <b>TIPS AS Technical Account</b> or TIPS account</li> <li>  RTGS sub-account</li> <li>  RTGS CB account or T2S CB account</li> </ul>

Additional UHB updates for Dashboard and Monitoring Screens will provided after implementation of the new screens.



**5.5.5 Cash Account Reference Data – Query Screen**

<b>CASH ACCOUNT REFERENCE DATA – QUERY SCREEN – GENERAL</b>	
Account Type	<p>This field offers the possibility to restrict the result list to cash accounts of a specific account type.</p> <p>Select one or more of the following values:</p> <ul style="list-style-type: none"><li><input type="checkbox"/> AS Guarantee Funds Account</li><li><input type="checkbox"/> AS Technical Account</li><li><input type="checkbox"/> CLM CB Account</li><li><input type="checkbox"/> Marginal Lending Account</li><li><input type="checkbox"/> MCA</li><li><input type="checkbox"/> Overnight Deposit Account</li><li><input type="checkbox"/> RTGS CB Account</li><li><input type="checkbox"/> RTGS DCA</li><li><input type="checkbox"/> RTGS Dedicated Transit Account</li><li><input type="checkbox"/> RTGS Sub-Account</li><li><input type="checkbox"/> TIPS Account</li><li><input type="checkbox"/> <b>TIPS AS Technical Account</b></li><li><input type="checkbox"/> T2S DCA</li><li><input type="checkbox"/> T2S CB Account</li></ul> <p>Default value: 'No filter selected'</p>

**5.5.6 Cash Account Reference Data – List Screen**

For cash accounts of the following account types, no context menu is enabled: 'CLM CB Account', 'Overnight Deposit Account', 'Marginal Lending Account', 'CLM Dedicated Transit Account', 'CB ECB Account', 'ECB Mirror Account', 'TIPS Account', '**TIPS AS Technical Account**', 'T2S DCA' and 'MCA'.

**5.1.1 Cash Transfers – Query Screen**

–

CASH TRANSFERS – QUERY SCREEN – ACCOUNT SELECTION	
Account Type	<p>This field offers the possibility to restrict the result list to cash transfers of specific account types.</p> <p>This field and the fields 'Account BIC' and 'Account Number' are mutually exclusive.</p> <p>The value selected in this field is independent of the selection made in 'Credits / Debits'.</p> <p>Select one or more of the following values:</p> <ul style="list-style-type: none"> <li>  CB ECB Account</li> <li>  CLM CB Account</li> <li>  ECB Mirror Account</li> <li>  Marginal Lending Account</li> <li>  MCA</li> <li>  Overnight Deposit Account</li> <li>  RTGS CB Account</li> <li>  RTGS DCA</li> <li>  RTGS Sub-Account</li> <li>  TIPS Account</li> <li>  <b>TIPS AS Technical Accounts</b></li> <li>  T2S CB Account</li> <li>  T2S DCA</li> </ul> <p>Default value: 'No filter selected'</p>

### 7.1.41 Liquidity Transfer – New Screen

Reference for error message	Field or button	Error text	Description
U027	<ul style="list-style-type: none"> <li>  Field 'Account Number'</li> <li>  'Submit' Button</li> </ul>	Invalid credit account type	<p>The creditor account must be a valid account with the following account type:</p> <ul style="list-style-type: none"> <li>  RTGS DCA</li> <li>  RTGS sub-account</li> </ul>

Reference for error message	Field or button	Error text	Description
			<ul style="list-style-type: none"> <li>  RTGS dedicated transit account</li> <li>  RTGS CB account</li> <li>  MCA</li> <li>  CLM CB account or T2S CB account</li> <li>  CLM overnight deposit account</li> <li>  T2S DCA, <b>TIPS AS Technical Account</b> or TIPS account</li> </ul>

## **CRDM UHB**

### **2.4.2.2 Banking Group – Details Screen**

#### **Context of Usage**

This screen displays detailed information on the selected Banking Group. You can check the data and proceed further by clicking on the buttons below. The Banking Group is visible from any other CB ~~or~~ , Payment Bank [or Ancillary System](#), while the Account [Party](#) entities included in the group are visible depending on the requestor's role.

### **4.3.2.13 Banking Group – Search/List Screen**

DRDJ007	IRestore button	Invalid Entity	For Banking Groups, the Entity Identifier should refer to an existing and active Payment Bank Party <a href="#">or Ancillary System Party</a> in the data scope of the requestor.
---------	-----------------	----------------	---

### **4.3.2.14 Banking Group – Details Screen**

DRDJ007	IRestore button	Invalid Entity	For Banking Groups, the Entity Identifier should refer to an existing and active Payment Bank Party <a href="#">or Ancillary System Party</a> in the data scope of the requestor.
---------	-----------------	----------------	---

### **4.3.2.15 Banking Group – New/Edit Screen**

DRCJ005	ISubmit button	Invalid Entity	For Banking Groups, the Entity Identifier should refer to an existing and active Payment Bank Party <a href="#">or Ancillary</a>
---------	----------------	----------------	--

			<a href="#">System Party</a> in the data scope of the requestor.
--	--	--	--

[...]

DRUJ006	Submit button	Invalid Entity	For Banking Groups, the Entity Identifier should refer to an existing and active Payment Bank Party <a href="#">or Ancillary System Party in the data scope of the requestor.</a>
---------	---------------	----------------	---

---

**High level description of Impact:**

---

**Impacts on other projects and products:**

This change request should be approved or rejected in conjunction with TIPS CR TIPS.0033.URD.

---

**Outcome/Decisions:**

**4CB assumptions and guidelines:**

Ensured by CRDM: Standing order liquidity transfers between RTGS/CLM accounts and TIPS AS Technical Accounts are not valid.

**1) Groups**

An "Ancillary System" can be part of a banking group.

As for payment banks also each AS party can only belong to maximum one banking group. It is not allowed that the same party belongs to more than one banking group.

A "TIPS AS Technical Accounts" cannot be part of an account monitoring group.

This is ensured by CRDM.

**2) Automated marginal lending**

Balances on "TIPS AS Technical Accounts" are not included in the calculated overall aggregated balance of the institution on all of the cash accounts.



			Process	User Interaction	Business Data Definition	Non-functional Requirements	
CENTRAL LIQUIDITY MANAGEMENT (CLM)	GENERAL	CLM Payment Order					
		CLM Liquidity Transfer Order					
		CLM Liquidity Reservation					
	CENTRAL BANK SERVICES	Modify Credit Line					
		Connected Payments					
		Overnight Deposit					
		Marginal Lending					
		Minimum Reserve Management					
		EoD General Ledger Files	x				
	REAL-TIME GROSS SETTLEMENT (RTGS)	GENERAL	RTGS Payment Order				
			Queue Management				
RTGS Liquidity Transfer Order							
RTGS Liquidity Reservation							
RTGS Services for Ancillary Systems (AS)							
CB SERVICES							
COMMON	GENERAL	ESMIG					
		CRDM	x				
		Business Day					
		User Roles and Access					

		Information and Reporting	x			
		Data Warehouse Services	x			
	<b>CENTRAL BANK SERVICES</b>	Billing				
		Legal Archiving				
		Contingency Settlement				
<b>4CB internal categories</b>		Operational Tools				
		Automation				

<b>Impact on major documentation</b>		
<b>Document</b>	<b>Chapter</b>	<b>Change</b>
Impacted UDFS chapter	CLM 3.4 Types of groups 8.4.2 Content of TARGET Services general ledgers Index of validation rules and error codes	
Additional deliveries for Message Specification/ MyStandards		
UHB	<p>CLM 5.6.3 Cash Account Reference Data Query Screen 5.1.1 Cash Transfer Query Screen</p> <p>5.8.7 Available Liquidity on Party Level List Screen 5.8.8 Available Liquidity on Account Level List Screen</p> <p>5.6.4 Cash Account Reference Data List Screen 7.1.27 Liquidity Transfer – New Screen</p> <p>Additional UHB updates for Dashboard and Monitoring Screens will provided after implementation of the new screens.</p> <p>RTGS 5.5.5 Cash Account Reference Data Query Screen 5.1.1 Cash Transfer Query Screen</p> <p>5.5.6 Cash Account Reference Data list Screen 7.1.41 Liquidity Transfer – New Screen</p>	<p>Add new Account Type TIPS AS Technical Account</p> <p>Add Account Type TIPS AS Technical Account in query to TIPS</p> <p>No Context menu for TIPS AS Technical Account Update Error Code U027</p> <p>Add new Account Type TIPS AS Technical Account</p> <p>No Context menu for TIPS AS Technical Account Update Error Code U027</p>

	CRDM 2.4.2.2 Banking Group – Details Screen	The content is visible to Ancillary Systems, too.
	4.3.2.13 Banking Group – Search/List Screen, 4.3.2.14 Banking Group – Details Screen	DRDJ007, reference to Ancillary Systems added.
	4.3.2.15 Banking Group – New/Edit Screen	DRCJ005, DRUJ006, reference to Ancillary Systems added.
External training materials		
Other documentations		
Links with other requests		
Links	Reference	Title
<b>OVERVIEW OF THE IMPACT OF THE REQUEST ON THE T2SYSTEM AND ON THE PROJECT</b>		
Summary of functional, technical, operational, stakeholder, financial and interoperability impacts		
<p>The TIPS AS Technical Account is taken into account as valid account. CLM/RTGS does not restrict liquidity transfers to this account. CLM shall validate the account type for TIPS accounts only for not being a transit account. Pull LTs from “TIPS AS Technical Accounts” to a CLM MCA will not be possible as no change of the relevant URD is foreseen.</p> <p>Also Standing order liquidity transfers between RTGS/CLM accounts and TIPS AS Technical Accounts are not valid. This is ensured by CRDM.</p> <p>An “Ancillary System” using party service link “TIPS Ancillary system” can be part of a banking group.</p> <p>Note: Also each AS party can only belong to maximum one banking group. It is not allowed that the same party belongs to more than one banking group.</p> <p>A “TIPS AS Technical Accounts” cannot be part of an account monitoring group. This is ensured by CRDM.</p> <p>As regards automated marginal lending, balances on “TIPS AS Technical Accounts” are not included in the calculated overall aggregated balance of the institution on all of the cash accounts.</p> <p>The CR changes the list of accounts subject to dash board /monitoring queries, thus the TIPS AS Technical Account is included in these queries.</p> <p>Note – Minimum reserve: In line with the current CRDM design, no minimum reserve configuration is possible for TIPS AS Technical Accounts.</p>		
Summary of dependencies		
<p>Dependency to TIPS-CR0033</p> <p>No dependencies for ECMS and T2S</p>		
Summary of project risk		
None		
Security analysis		
No potentially adverse effect was identified during the security assessment		