



EUROPEAN CENTRAL BANK

EUROSYSTEM

General Information (Origin of Request)		
<input type="checkbox"/> User Requirements Document (URD) <input checked="" type="checkbox"/> User Detailed Functional Specification (UDFS) <input checked="" type="checkbox"/> User Handbook (UHB) <input type="checkbox"/> Other User Functional or Technical Documentation (SYS)		
Request raised by: 4CB	Institute: 4CB	Date raised:
Request title: Multiplex Editorial Change Request on UDFS v3.0 and UHB v3.0		Request ref. no: CSLD-0110-SYS
Request type: Common		
1. Legal/business importance parameter: L/M/H	2. Market implementation efforts parameter – Stakeholder impact: L/M/H	
3. Operational impact: L/M/H	4. Financial impact parameter: No cost impact	
5. Functional/ Technical impact: na	6. Interoperability impact: na	
Requestor Category: Eurosystem	Status: Draft CR	

Description of requested change:

Editorial changes regarding Billing UDFS v3.0, Business Day Management UDFS v3.0, Central Liquidity Management UDFS v3.0, Common Reference Data Management UDFS v3.0, Data Warehouse (DWH) UDFS v3.0, Enhanced Contingency Solution (ECONS II) UDFS v3.0, Real-Time Gross Settlement UDFS v3.0, Billing UHB v3.0, Common Reference Data Management UHB v3.0, Data Warehouse (DWH) UHB version R2023 JUN, MyStandards Usage Guidelines and MyStandards Examples.

Reason for change and expected benefits/business motivation:

The editorial changes listed below are related to the Billing UDFS v3.0, Business Day Management UDFS v3.0, Central Liquidity Management UDFS v3.0, Common Reference Data Management UDFS v3.0, Data Warehouse (DWH) UDFS v3.0, Enhanced Contingency Solution (ECONS II) UDFS v3.0, Real-Time Gross Settlement UDFS v3.0, Billing UHB v3.0, Common Reference Data Management UHB v3.0, Data Warehouse (DWH) UHB version R2023 JUN. Their incorporation into the UDFS v3.0 and UHB v3.0 is required for clarifying the documentation underlying the software. Please note that the changes referring to UDFS v3.0 and UHB v3.0 will also be reflected, when relevant, into the schema documentation published in MyStandards.

CLM UDFS	6
1 EUROSISTEM UPDATE [Internal Review]: whole document (CLM UDFS).....	6
2 EUROSISTEM UPDATE [Internal Review]	6
3 EUROSISTEM UPDATE [Internal Review]	6
4 EUROSISTEM UPDATE [Internal Review]: page 36 (CLM UDFS-chapter 2.2 Authentication and authorisation process in CLM)	6
5 EUROSISTEM UPDATE [Internal Review]: page 41 (CLM UDFS-chapter 2.5 Communication between CLM and CLM Actors).....	6
6 EUROSISTEM UPDATE [Internal Review]: page 70 (CLM UDFS-chapter 3.5 Shared reference data)	7
7 EUROSISTEM UPDATE [Internal Review]: page 71 (CLM UDFS-chapter 3.6 Local reference data)	7
8 EUROSISTEM UPDATE [Internal Review]: page 77 (CLM UDFS-chapter 4.3 Overview description of the business day)	7
9 EUROSISTEM UPDATE [Internal Review]: page 84 (CLM UDFS-chapter 4.4.2.1 Settlement window for CBOs).....	8

10	EUROSYSTEM UPDATE [Internal Review]: page 85 (CLM UDFS-chapter 4.4.2.2 Settlement window for liquidity transfer orders)	8
11	EUROSYSTEM UPDATE [Internal Review]: page 113 (CLM UDFS-chapter 5.3.8.2 Entry disposition)	8
12	EUROSYSTEM UPDATE [Internal Review]: page 169 (CLM UDFS-chapter 5.7.3.4 Specificities for delta set queries)	8
13	EUROSYSTEM UPDATE [Internal Review]: page 172 (CLM UDFS-chapter 5.9.2 Business Case ID specificities)	8
14	EUROSYSTEM UPDATE [Internal Review]: page 172 (CLM UDFS-chapter 5.9.3 Cash Transfer Category and Business Case Codes for various features)	8
15	EUROSYSTEM UPDATE [Internal Review]: page 180 (CLM UDFS-chapter 6.4.2 General Features of Legal Archiving)	9
16	EUROSYSTEM UPDATE [Internal Review]: page 202 (CLM UDFS-chapter 8.6 Query management - CB specific queries)	9
17	EUROSYSTEM UPDATE [Internal Review]: page 205 (CLM UDFS-chapter 8.12 Contingency upload of A2A files and messages in U2A)	9
18	EUROSYSTEM UPDATE [SDD-CN-0055]: page 237 (CLM UDFS-chapter 9.7.1 Description (Perform standard CLM settlement))	10
19	EUROSYSTEM UPDATE [Internal Review]: page 255 (CLM UDFS-chapter 9.15.1 Reject pending credit line modification)	10
20	EUROSYSTEM UPDATE [Internal Review]: page 261 (CLM UDFS-chapter 9.17.1 Description)	11
21	EUROSYSTEM UPDATE [Internal Review]: page 270 (CLM UDFS-chapter 9.20.2 Messages)	13
22	EUROSYSTEM UPDATE [Internal Review]: page 278 (CLM UDFS-chapter 9.22.5 Process business day event "CB cut-off for standing facilities")	14
23	EUROSYSTEM UPDATE [Internal Review]: page 291 (CLM UDFS-chapter 9.23.7.2 After launch of ECMS)	15
24	EUROSYSTEM UPDATE [Internal Review]: page 297 (CLM UDFS-chapter 9.24.3 Process minimum reserve)	16
25	EUROSYSTEM UPDATE [Internal Review]: page 376 (CLM UDFS-chapter 12.1.2.3 The message in business context)	17
26	EUROSYSTEM UPDATE [Internal Review]: page 379 (CLM UDFS-chapter 12.1.3.3. The message in business context)	17
27	EUROSYSTEM UPDATE [SDD-CN 082]: page 373 (CLM UDFS-chapter 12.2.1.1 overview and scope of the message)	17
28	EUROSYSTEM UPDATE [Internal Review]: page 386 (CLM UDFS-chapter 12.2.1.3. The message in business context)	17
29	EUROSYSTEM UPDATE [SDD-CN 082]: page 378 (CLM UDFS-chapter 12.2.2.1 overview and scope of the message)	18
30	EUROSYSTEM UPDATE [Internal Review]: page 397 (CLM UDFS-chapter 12.2.2.3. The message in business context)	18

31	EUROSYSTEM UPDATE [Internal Review]: page 445 (CLM UDFS-chapter 12.2.4.3. The message in business context)	19
32	EUROSYSTEM UPDATE [L2 Comment No. 18]: page 457 (CLM UDFS-chapter 12.2.4.3. The message in business context)	19
33	EUROSYSTEM UPDATE [Internal Review]: page 476 (CLM UDFS-chapter 12.2.5.3. The message in business context)	19
34	EUROSYSTEM UPDATE [Internal Review]: page 590 (CLM UDFS-chapter 13.1.3.3. The message in business context)	20
35	EUROSYSTEM UPDATE [Internal Review]: page 660 (CLM UDFS-chapter 14 Index and digital signature).....	20
36	EUROSYSTEM UPDATE [Internal Review]: page 660 (CLM UDFS-chapter 14.1 Index of validation rules and error codes)	20
37	EUROSYSTEM UPDATE [Internal Review]: page 831 (CLM UDFS-chapter 14.2.3 Message type 1: file with multiple ISO 20022 messages), page 834 (CLM UDFS-chapter 14.2.4 Message type 2: single ISO 20022 message)	21
	RTGS UDFS.....	23
38	EUROSYSTEM UPDATE [Internal Review]: whole document (RTGS UDFS)	23
39	EUROSYSTEM UPDATE [Internal Review]	23
40	EUROSYSTEM UPDATE [Internal Review]	23
41	EUROSYSTEM UPDATE [Internal Review]: page 43 (RTGS UDFS-chapter 2.2 Authentication and authorisation in RTGS)	23
42	EUROSYSTEM UPDATE [Internal Review]: page 48 (RTGS UDFS-chapter 2.5 Communication between RTGS and RTGS Actors).....	23
43	EUROSYSTEM UPDATE [ECB JIRA CSLD-1374]: page 58 (RTGS UDFS chapter 3.1.6 Blocking/unblocking party).....	24
44	EUROSYSTEM UPDATE [Internal Review]: page 83 (RTGS UDFS-chapter 4.3 Overview description of the business day)	24
45	EUROSYSTEM UPDATE [internal review]: page 81 (RTGS UDFS chapter 4.4.1 Start-of-day period (18:45 – 19:30 CET)).....	24
46	EUROSYSTEM UPDATE [Internal Review]: page 144 (RTGS UDFS-chapter 5.3.10 Cash Transfer order processing times	25
47	EUROSYSTEM UPDATE [Internal Review]: page 168 (RTGS UDFS-chapter 5.4.4.1 AS settlement procedure C)	27
48	EUROSYSTEM UPDATE [Internal Review]: page 210 (RTGS UDFS-chapter 5.5.3.1.2 Effect and tapping of liquidity reservation)	28
49	EUROSYSTEM UPDATE [Internal Review]: page 245 (RTGS UDFS-chapter 5.6.3.4 Specificities for delta set queries	29
50	EUROSYSTEM UPDATE [Internal Review]: page 244 (RTGS UDFS-chapter 5.9.2 Business Case ID specificities).....	30

51	EUROSYSTEM UPDATE [Internal Review]: page 254 (RTGS UDFS-chapter 5.9.3 Cash Transfer Category and Business Case Codes for various features).....	30
52	EUROSYSTEM UPDATE [Internal Review]: page 358 (RTGS UDFS-chapter 9.14.22.1 Description)	30
53	EUROSYSTEM UPDATE [Internal Review]: page 392 (RTGS UDFS-chapter 10 Messages introduction).....	30
54	EUROSYSTEM UPDATE [Internal Review]: page 527 (RTGS UDFS-chapter 12.2.3.3 The message in business context)	30
55	EUROSYSTEM UPDATE [Internal Review]: page 543 (RTGS UDFS-chapter 12.2.4.1 Overview and scope of the message)	31
56	EUROSYSTEM UPDATE [BBK L2 comment 2]: page 582-584 (RTGS UDFS-chapter 12.2.5.3 The message in business context)	31
57	EUROSYSTEM UPDATE [Internal Review]: page 645 (RTGS UDFS-chapter 12.2.14.3 The message in business context)	31
58	EUROSYSTEM UPDATE [ECB comment 40]: page 721-722 (RTGS UDFS-chapter 12.2.21.3 The message in business context)	33
59	EUROSYSTEM UPDATE [ECB comment 42]: page 723-724 (RTGS UDFS-chapter 12.2.21.3 The message in business context)	33
60	EUROSYSTEM UPDATE [ECB comments 44, 45, 46, 47, 48, 50 and 52]: page 725-737 (RTGS UDFS-chapter 12.2.21.3 The message in business context).....	34
61	EUROSYSTEM UPDATE [ECB comment 55]: page 741 (RTGS UDFS-chapter 12.2.21.3 The message in business context)	34
62	EUROSYSTEM UPDATE [Internal Review]: page 761 (RTGS UDFS-chapter 12.2.22.3 The message in business context)	36
63	EUROSYSTEM UPDATE [Internal Review]: page 790 (RTGS UDFS-chapter 12.4.1.1 Overview and scope of the message)	36
64	EUROSYSTEM UPDATE [Internal Review]: page 824 and 826 (RTGS UDFS-chapter 12.4.3.3 the message in business context)	37
65	EUROSYSTEM UPDATE [Internal Review]: page 849-850 (RTGS UDFS-chapter 12.4.4.3 The message in business context)	37
66	EUROSYSTEM UPDATE [Internal Review]: page 953 (RTGS UDFS-chapter 13.1 Index of validation rules and error codes)	37
67	EUROSYSTEM UPDATE [Internal Review]: page 1443 (RTGS UDFS-chapter 13.2.3 Message type 1: file with multiple ISO 20022 messages), page 1446 (RTGS UDFS-chapter 13.2.4 Message type 2: single ISO 20022 message)	38
	DWH UDFS	39
68	EUROSYSTEM UPDATE [CSLD-1237]: page 506 (DWH UDFS-new chapter 3.6 CLM/RTGS inbound XML messages available in the DWH).....	39
	DWH UHB	41
69	EUROSYSTEM UPDATE [Internal Review]: page 167ff (DWH UHB-chapter 5.5.2 (DEX02 – Data extraction request)).....	41

BDM UDFS	57
70 EUROSYSYEM UPDATE [CSLD SDD-CN-PBR-072]: page 32 (BDM UDFS-chapter 3.1 List of messages)	57
BILL UDFS	58
71 EUROSYSYEM UPDATE [CSLD SDD-CN-PBR-072]: page 45 (BILL UDFS-chapter 3.1 List of messages)	58
CRDM UDFS	59
72 EUROSYSYEM UPDATE [CSLD SDD-CN-PBR-072]: page 163 (CRDM UDFS-chapter 3.1 List of messages)	59
73 EUROSYSYEM UPDATE [CSLD SDD-CN-PBR-075]: page 266 (CRDM UDFS-chapter 4.5.3.9. Report Configuration - New)	59
74 EUROSYSYEM UPDATE [Internal Review]: page 266 (CRDM UDFS-chapter 4.5.3.9. Report Configuration - New)	60
75 EUROSYSYEM UPDATE [Internal review]: page 33 (CRDM UDFS-chapter 1.2.2.1.2 Privilege)	61
ECONS II UDFS	62
76 EUROSYSYEM UPDATE [CSLD SDD-CN-PBR-072]: page 99 (ECONS II UDFS-chapter 3.2.2 Technical validation at transport and business level)	62
77 EUROSYSYEM UPDATE [CSLD SDD-CN-PBR-080]: page 24 (ECONS II UDFS-chapter 1.4.1 Liquidity Transfer), page 38 (ECONS II UDFS-chapter 1.5.2 Liquidity Management)	62
BILL UHB	63
78 EUROSYSYEM UPDATE [JIRA issue CSLD-1384]: page 28 (BILL UHB-chapter 2.2.1.1 Invoice Data – Search/List Screen), page 32 (BILL UHB-chapter 2.2.1.2 Invoice Data – Details Screen)	63
CRDM UHB	64
79 EUROSYSYEM UPDATE [CSLD SDD-CN-PBR-066]: page 522 (CRDM UHB-chapter 4.3.2.11 Authorised Account User – Search/List Screen), page 523 (CRDM UHB-chapter 4.3.2.12 Authorised Account User – New/Edit Screen)	64
80 EUROSYSYEM UPDATE [CSLD SDD-CN-PBR-075]: page 90 (CRDM UHB-chapter 2.3.1.8 Party Service Link – New/Edit Screen) page 232 (CRDM UHB-chapter 2.3.4.5 Report Configurations – Search/List Screen), page 238 (CRDM UHB-chapter 2.3.4.6 Report Configuration – Details Screen), page 242 (CRDM UHB-chapter 2.3.4.7 Report Configuration – New/Edit Screen), page 595 (CRDM UHB-chapter 4.3.2.56 Party Service Link – New/Edit Screen), page 600 (CRDM UHB-chapter 4.3.2.57 Report Configuration – Search/List Screen), page 602 (CRDM UHB-chapter 4.3.2.58 Report Configuration – Details Screen), page 604 (CRDM UHB-chapter 4.3.2.59 Report Configuration – New/Edit Screen)	65
81 EUROSYSYEM UPDATE [CSLD SDD-CN-PBR-0079]: page 567 (CRDM UHB-chapter 4.3.2.50 Message Subscription Rule – New/Edit Screen) page 562 (CRDM UHB-4.3.2.48 Message Subscription Rule Set – Details)	72

Proposed wording for the Change request:

CLM UDFS

1 EUROSYSYSTEM UPDATE [Internal Review]: whole document (CLM UDFS)

Incorrect spelling "occurence" and replace it with "occurrence"

The word "occurrence" has been wrongly spelled in the UDFS. The main issues are with the camt.004 and in the annex of validation rules.

2 EUROSYSYSTEM UPDATE [Internal Review]

Alignment of links set on internal messages.

3 EUROSYSYSTEM UPDATE [Internal Review]

Removal of outdated footnotes due to implementation of T2S CRs.

4 EUROSYSYSTEM UPDATE [Internal Review]: page 36 (CLM UDFS-chapter 2.2 Authentication and authorisation process in CLM)

Update of reference to CRDM UDFS

[...]

The privileges, which are used in CLM, are listed in the CRDM UDFS, chapter "*Privileges*" in the table "*CLM functions*" and in the CLM UHB (chapter "*List of privileges*") Privileges listed in the CRDM UDFS as "A2A only" or "U2A only" are marked accordingly.

[...]

5 EUROSYSYSTEM UPDATE [Internal Review]: page 41 (CLM UDFS-chapter 2.5 Communication between CLM and CLM Actors)

Update of references to CRDM and ESMIG UDFS

[...]

For further information see the CRDM UDFS, chapter "*Party ~~D~~data ~~M~~management*".

[...]

Further details on the set-up are provided in the ESMIG UDFS, chapter "*Authentication and authorisation concepts*".

[...]

6 EUROSYSYSTEM UPDATE [Internal Review]: page 70 (CLM UDFS-chapter 3.5 Shared reference data)

Correction of one typo and a consistency update

No specific configuration by the CLM Actor is required. It is up to the operator ~~the~~to set-up and to maintain the duplicate check parameter. All actions (set up, modify, delete) become effective as of the next business day:

Concerned process	Parameter	Created by	Updated by	Mandatory/optional	Standard or default value
Message/File Duplicate Check	Number of business days in the past for duplicate check on files and individual messages	Operator	Operator	M	1 <u>business</u> day (same business day)
Liquidity transfer order duplicate check	Number of business days in the past for duplicate check on liquidity transfer orders	Operator	Operator	M	5 business days
Payment order duplicate check	Number of business days in the past for duplicate check on payment orders	Operator	Operator	M	1 business day (same business day)

Table 1 - Attributes of the duplicate check

7 EUROSYSYSTEM UPDATE [Internal Review]: page 71 (CLM UDFS-chapter 3.6 Local reference data)

Clarification on handling of credit lines in Euro added in footnote 22 (see text of VR01240).

Footnote 22: Credit lines on MCAs can be managed by a CB via A2A or U2A. Credit lines are not deleted by CLM at the end of the business day. A credit line modification (camt.998 ModifyCreditLine) with currency 'EUR' is not allowed by a CB after ECMS go-live.

8 EUROSYSYSTEM UPDATE [Internal Review]: page 77 (CLM UDFS-chapter 4.3 Overview description of the business day)

Update of reference to CRDM UDFS and UHB

[...]

Reference data are captured in CRDM. Details are provided in the CRDM UDFS, chapter "Common ~~R~~Reference ~~d~~Data" and in the CRDM UHB, chapter "*Party Management*" ~~>~~and "*Account Management*".

[...]

9 EUROSYSYSTEM UPDATE [Internal Review]: page 84 (CLM UDFS-chapter 4.4.2.1 Settlement window for CBOs)

Correction of a typo.

The planned time for this event is 19:30 CET. The settlement window is closed by the "Cut-~~Off~~ for CLM RTS".

10 EUROSYSYSTEM UPDATE [Internal Review]: page 85 (CLM UDFS-chapter 4.4.2.2 Settlement window for liquidity transfer orders)

Correction of a typo.

The settlement window for CBOs is started by the event "Start of CLM RTS". The planned time for this event is 19:00 CET. The settlement window is closed by the "Cut-~~Off~~ for CLM RTS".

11 EUROSYSYSTEM UPDATE [Internal Review]: page 113 (CLM UDFS-chapter 5.3.8.2 Entry disposition)

Correction of a typo in CR 76.

Note: In case there is no liquidity at all available in the non-reserved part of the MCA or CLM CB Account, the rule-based liquidity transfer order is rejected.

12 EUROSYSYSTEM UPDATE [Internal Review]: page 169 (CLM UDFS-chapter 5.7.3.4 Specificities for delta set queries)

Correction

The following additional rules apply:

[...]

- Delta set queries are possible for one or more accounts. In maximum, the user may query its full data scope within CLM the respective settlement service (RTGS or CLM).

[...]

13 EUROSYSYSTEM UPDATE [Internal Review]: page 172 (CLM UDFS-chapter 5.9.2 Business Case ID specificities)

Change chapter title to "Business Case ID specificities".

14 EUROSYSYSTEM UPDATE [Internal Review]: page 172 (CLM UDFS-chapter 5.9.3 Cash Transfer Category and Business Case Codes for various features)

double allocation of chapter name stemming from changes of CR0081, changing name of chapter

5.9.3 ~~Cash Transfer Category and Business Case Codes for various features~~ Business case codes and their usage

15 EUROSISTEM UPDATE [ECB/TSWG Review]: page 172 (CLM UDFS-chapter 5.11 Cash Transfer Category and Business Case Codes for various features)

Add footnote for further explanation

New footnote for LIIE:

applicable to all immediate inter-service liquidity transfers between RTGS and CLM and to all inter-service liquidity transfers generated by T2S and TIPS (immediate + standing orders)

amend footnote for LSIE:

applicable to all inter-service ~~For~~ standing order liquidity transfers ~~between~~ generated by RTGS and CLM (including those towards T2S and TIPS)

16 EUROSISTEM UPDATE [ECB/TSWG Review]: page 180 (CLM UDFS-chapter 6.4.2 General Features of Legal Archiving)

Inclusion of DWH reference into this descriptive segment

All external communication is provided by ESMIG to LEA. In addition, the following internal message exchanges are provided by CLM (via DWH) for Legal Archiving:

17 EUROSISTEM UPDATE [Internal Review]: page 202 (CLM UDFS-chapter 8.6 Query management - CB specific queries)

Correction of reference to wrong chapter

As regards the processing the description in chapter ~~execute query~~ [Send CLM query](#) also applies for all queries irrespective of their access limitations.

18 EUROSISTEM UPDATE [Internal Review]: page 205 (CLM UDFS-chapter 8.12 Contingency upload of A2A files and messages in U2A)

Update of reference to CRDM UDFS

[...]

Both users need the privilege as described in the CRDM UDFS, chapter "*Privileges*" in the table "*CLM functions*" and in the CLM UHB, chapter "*List of Privileges*".

[...]

19 EUROSYSYSTEM UPDATE [SDD-CN-0055]: page 237 (CLM UDFS-chapter 9.7.1 Description (Perform standard CLM settlement))

Remove 'CORE' in pacs.009 in table 67

Cash transfer order type	Submission Type	Use Case	“Payment order settlement notification”/ PaymentStatusReport (pacs.002)	“Credit notification” / Bank ToCustomerDebit CreditNotification (camt.054)
Payment	A2A	FinancialInstitutionCreditTransfer (CORE) (pacs.009)	-	Optional
		FinancialInstitutionDirectDebit (pacs.010)	Optional	-
	U2A	Any payment initiated via U2A	-	Optional
	System-generated	Any system-generated payment	Optional	Optional
[...]				

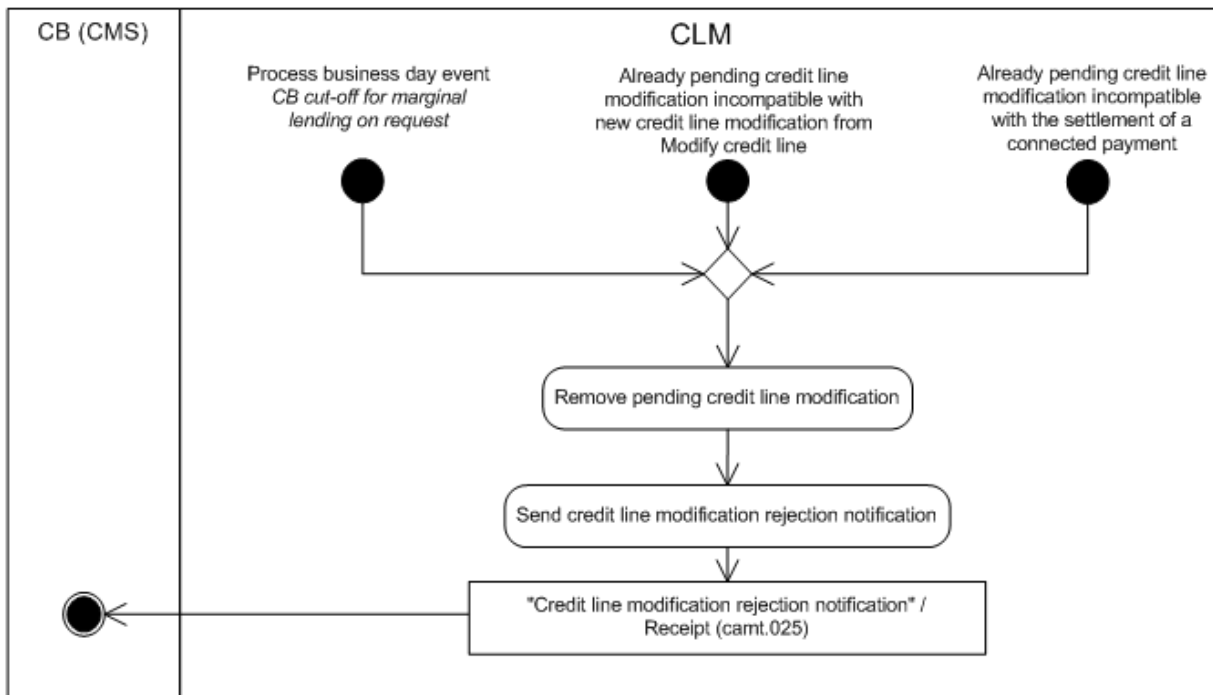
Table 67 - Outbound CLM settlement notifications for the submitting actor

[...]

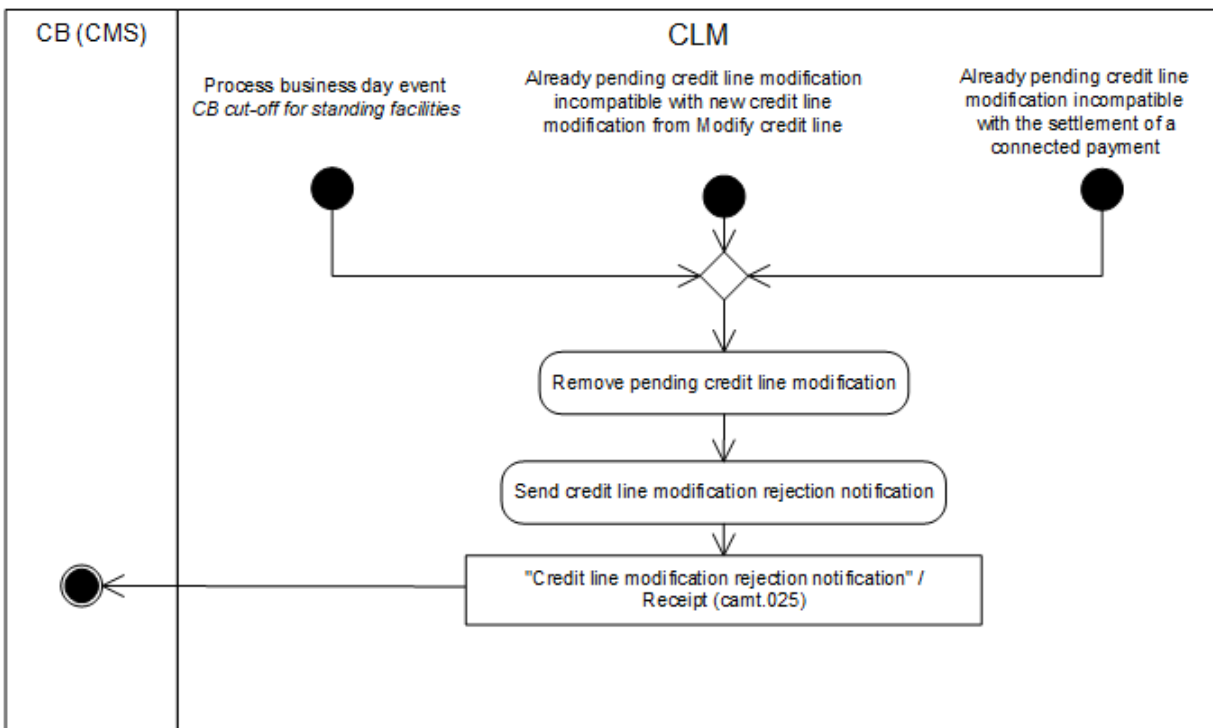
20 EUROSYSYSTEM UPDATE [Internal Review]: page 255 (CLM UDFS-chapter 9.15.1 Reject pending credit line modification)

Update of the UML in line with the description, i.e. “CB cut-off for marginal lending on request” to be replaced by “CB cut-off for standing facilities”.

Old UML:



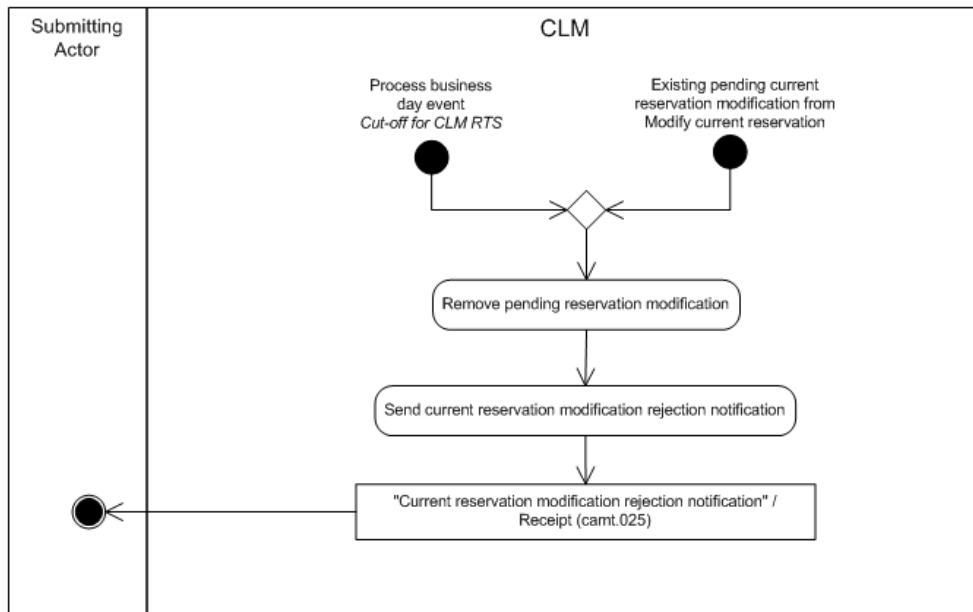
New UML:



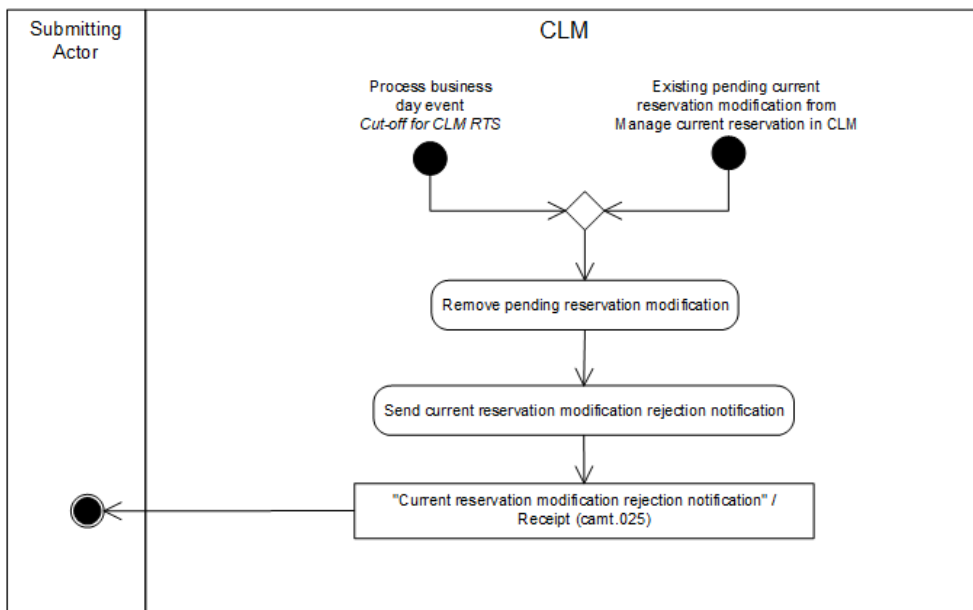
21 EUROSYSYSTEM UPDATE [Internal Review]: page 261 (CLM UDFS-chapter 9.17.1 Description)

Update of the UML in line with the description, i.e. "Modify current reservation" to be replaced by "Manage current reservation".

Old figure 64 - Reject pending reservation modification:



New figure 64 - Reject pending reservation modification:



22 EUROSYSYSTEM UPDATE [Internal Review]: page 270 (CLM UDFS-chapter 9.20.2 Messages)

Consistency update: Update of Table 79 - Used messages to coordinate general ledger creation with other settlement services in line with the changes done in CR 109.

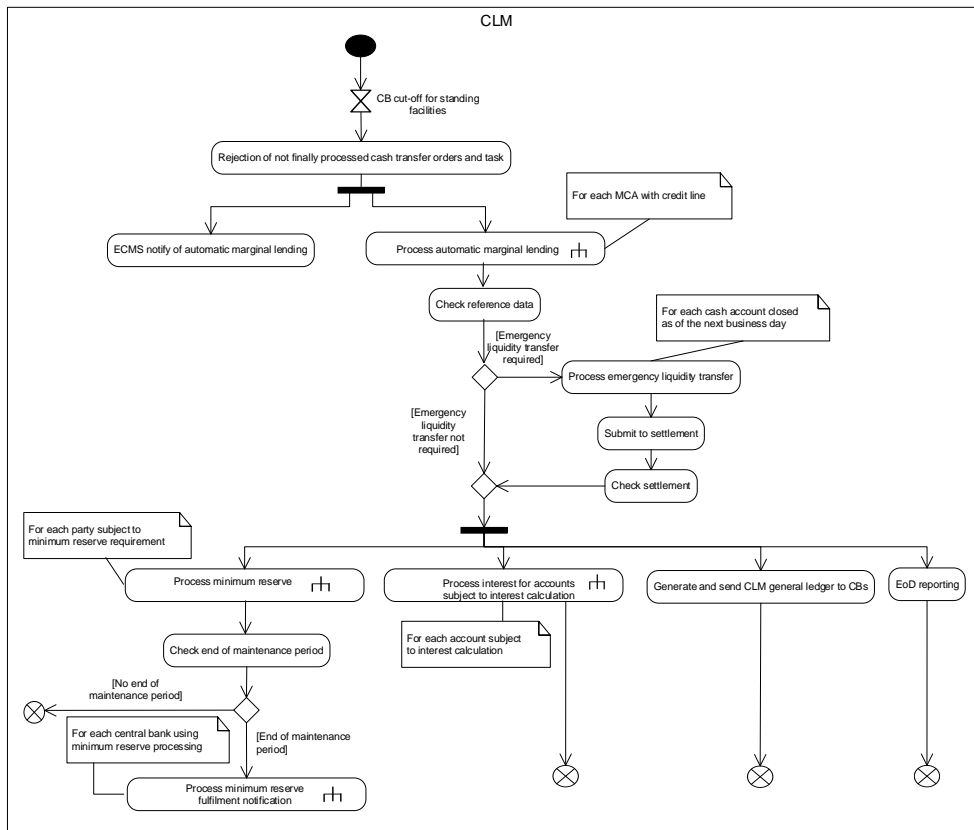
Use case	Message description/usage	ISO message	ISO code
CLM informs the other TARGET settlement service on the event "Change of the business day".	Business day notification	ReturnBusinessDayInformation	camt.019
Send stop accepting outbound inter-service liquidity transfers	Stop accepting outbound inter-service liquidity transfers	ReturnBusinessDayInformation	camt.019
Send confirmation on finality of all outbound inter-service liquidity transfers to CLM	Confirmation on finality of all outbound inter-service liquidity transfers to CLM	Receipt	camt.025
Send generate general ledger to the settlement services	Generate general ledger	ReturnBusinessDayInformation	camt.019
Send general ledger to CLM	General ledger	BankToCustomerStatement	camt.053
After having got the general ledger file, the completion of the EoD processing and the business day has been changed CLM informs the other settlement services that inter-service liquidity transfers can be sent.	Start accepting outbound inter-service liquidity transfers	ReturnBusinessDayInformation	camt.019

23 EUROSYSYSTEM UPDATE [Internal Review]: page 278 (CLM UDFS-chapter 9.22.5 Process business day event “CB cut-off for standing facilities”)

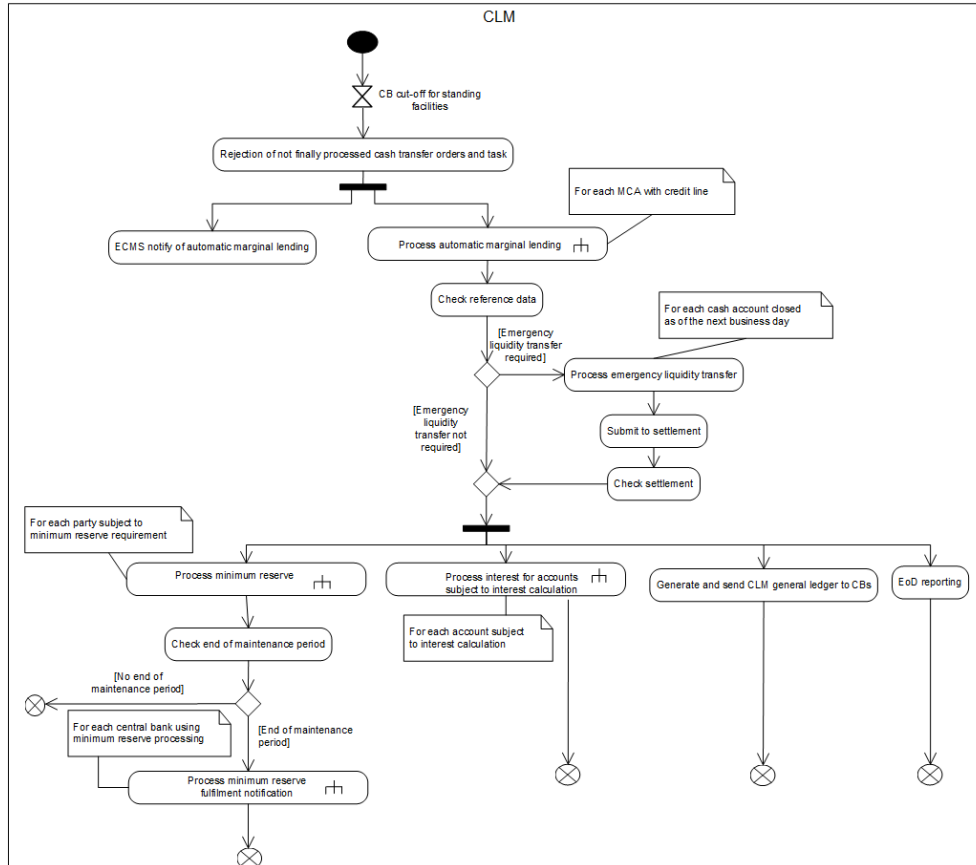
Consistency update based on the changes included in CR 109.

[...]

Old figure 73 - Process “CB cut-off for standing facilities”



New figure 73 - Process “CB cut-off for standing facilities”



The event “CB cut-off for standing facilities” triggers the rejection of not finally processed cash transfer orders and tasks. The process continues **with in parallel with the process “ECMS notify of automatic marginal lending” (once ECMS is live) and the sub-process “Process automatic marginal lending”.**

Then the process continues with the step “Check reference data”.

Check reference data

The processing step checks if there are any cash accounts to be closed as of the next business day that have a balance.

- In case no such accounts exist, the EoD processing continues and triggers in parallel the following sub-processes **and processing steps**.

[...]

Check settlement

This processing step checks continuously whether all submitted liquidity transfer orders are settled. Once all liquidity transfer orders are settled, the processing continues and triggers in parallel the following sub-processes **and processing steps**.

24 EUROSYSTEM UPDATE [Internal Review]: page 291 (CLM UDFS-chapter 9.23.7.2 After launch of ECMS)

Editorial update

For reimbursement of marginal lending on request the following rule applies: As ECMS can send regular or connected payment orders, CLM processes the payment orders received from ECMS in accordance with the

relevant sub-process, which is either "Perform standard CLM settlement" or "Settle connected payment". This includes reimbursement of marginal lending on request and respective interest payment orders.

25 EUROSYSYSTEM UPDATE [Internal Review]: page 297 (CLM UDFS-chapter 9.24.3 Process minimum reserve)

Editorial update to align the description with UML

[...]

Check on interest for excess reserve exemption amount–exempt tier

This processing step checks if interest have to be calculated:

Interest has to be calculated if all following conditions are fulfilled:

- the excess reserve interest rate (exempt tier) to be considered is not equal to zero;
- the excess reserve is not equal to zero.

The processing continues as follows:

- in case no interest for the exempt tier of the excess reserve has to be calculated, the processing terminates;
- in case interest for excess reserve has to be calculated, the processing continues with "Calculate interest on excess reserve exemption amount–exempt tier".

Check on interest for excess reserve remuneration amount–non-exempt tier

This processing step checks if interest have to be calculated:

Interest has to be calculated if all following conditions are fulfilled:

- the excess reserve interest rate (non-exempt tier) to be considered is not equal to zero;
- the excess reserve is not equal to zero.

The processing continues as follows:

- in case no interest for the non-exempt tier of the excess reserve has to be calculated, the processing terminates;
- in case interest for excess reserve has to be calculated, the processing continues with "Calculate interest on excess reserve remuneration amount–non-exempt tier".

Calculate interest on minimum reserve

This processing step calculates the interest on the minimum reserve and the processing continues with "Create payment order for interest on minimum reserve".

Calculate penalties on infringement

This processing step calculates the penalties due to the infringement of the minimum reserve requirements and the processing terminates. The further processing of the infringements of the minimum reserve requirements is described in [Administrate minimum reserve penalty order](#) [**Error! Bookmark not defined.**].

Calculate interest on excess reserve exemption amount–exempt tier

This processing step calculates the interest to be paid on the exempt tier of the excess reserve and the processing continues with "Create payment order for interest on excess reserve exemption amount–exempt tier".

Calculate interest on excess reserve remuneration amount–non-exempt tier

This processing step calculates the interest to be paid on the non-exempt tier of the excess reserve and the processing continues with "Create payment order for interest on excess reserve remuneration amount–non-exempt tier".

Create payment order for interest on minimum reserve

This processing step creates the payment order for interest on minimum reserve with value date two business days after the end of the respective minimum reserve maintenance period and with status "warehoused". The further processing is described in [Perform standard CLM settlement](#) [**Error! Bookmark not defined.**].

Create payment order for interest on excess reserve exemption amount–exempt tier

This processing step creates the payment order for interest on the exempt tier of the excess reserve with value date two business days after the end of the respective maintenance period and with status “warehoused”. The further processing is described in [Perform standard CLM settlement](#) [] **Error! Bookmark not defined.**]

Create payment order for interest on excess reserve remuneration amount—non-exempt tier

This processing step creates the payment order for interest on the non-exempt tier of the excess reserve with value date two business days after the end of the respective maintenance period and with status “warehoused”. The further processing is described in [Perform standard CLM settlement](#) [] **Error! Bookmark not defined.**]

26 EUROSYSYSTEM UPDATE [Internal Review]: page 376 (CLM UDFS-chapter 12.1.2.3 The message in business context)

Remove redundant text

~~In this usage case, the sender is requesting that the most recent BankToCustomerStatement (camt.053) [] 519] report(s) fulfilling the given criteria are sent back to them:~~

27 EUROSYSYSTEM UPDATE [Internal Review]: page 379 (CLM UDFS-chapter 12.1.3.3. The message in business context)

Correction of text wrongly expressed in CR-081.

Usage case: Message Rejection Notification (Scenario 008)

In this usage example, CLM is advising the business sender (CB) of a previous pacs.009 message that the BAH that was used, the whole message has been rejected by CLM validation. The failing reason code is “E002” (wrong network service used) and the appropriate text for this error is also included. The previous pacs.009 can be identified using the pacs.009 BAH BizMsgIdr which is supplied on the admi.007.

28 EUROSYSYSTEM UPDATE [SDD-CN 082]: page 373 (CLM UDFS-chapter 12.2.1.1 overview and scope of the message)

Addition of text

[...]

2) The "Minimum reserve fulfilment query" is used to request minimum reserve balances related to:

- | the data scope of the business sender without search criteria if the business sender is the account owner (non-leading CLM Account Holder), the leading CLM Account Holder, the co-manager (which is not the leading CLM Account Holder of its co-managee, but the co-managee (i) holds its minimum reserve directly and (ii) owns only one MCA and no further account(s) in any TARGET settlement service and (iii) is not the leading CLM Account Holder of other parties holding the minimum reserve indirectly) or the CB (banking community);
- | the leading CLM Account Holder BIC specified in the search criteria (account servicer BIC) if the business sender is a CB or a co-manager (which is not the leading CLM Account Holder of its co-managee, but the co-managee (i) holds its minimum reserve directly and (ii) owns only one MCA and no further account(s) in any TARGET settlement service and (iii) is not the leading CLM Account Holder of other parties holding the minimum reserve indirectly);

| [...]

29 EUROSYSYSTEM UPDATE [Internal Review]: page 386 (CLM UDFS-chapter 12.2.1.3. The message in business context)

Remove redundant text

Usage case: CLM Get Account (Scenario 104)

In this example, the business sender (CB) is using a minimum reserve fulfilment query code with a lead party identifier to indicate only accounts under this lead party should be returned.

~~GetAccount (camt.003) — usage case Request for minimum reserve fulfilment information by a CB, with data response.~~

30 EUROSYSYSTEM UPDATE [SDD-CN 082]: page 378 (CLM UDFS-chapter 12.2.2.1 overview and scope of the message)

Addition of text; capitalization of 'a'

[...]

2) "Query response for minimum reserve fulfilment query" to provide the requested minimum reserve fulfilment information for the current minimum reserve maintenance period. [...]

Leader view:

- | if business sender is a CB and search criteria is not provided or if business sender is a CB and leading CLM Account Holder BIC is specified in the search criteria (account servicer BIC);
- | ~~if business sender is a co-manager (which is not the leading CLM Account Holder of its co-managee, but the co-managee (i) holds its minimum reserve directly and (ii) owns only one MCA and no further account(s) in any TARGET settlement service and (iii) is not the leading CLM Account Holder of other parties holding the minimum reserve indirectly)and search criteria is not provided (in this case the co-manager will get its own minimum reserve fulfilment information as a leading CLM Account Holder – if applicable - as well as the information for its relevant co-managee(s)) or if business sender is a co-manager (which is not the leading CLM Account Holder of its co-managee, but the co-managee (i) holds its minimum reserve directly and (ii) owns only one MCA and no further account(s) in any TARGET settlement service and (iii) is not the leading CLM Account Holder of other parties holding the minimum reserve indirectly)and leading CLM Account Holder BIC is specified in the search criteria (account servicer BIC);~~

Note:

~~For co-managing CBs only: In case the co-manager is a CB party co-managing a co-managee related to another CB community, the co-managing CB will receive only the "national view" on its own CB community without cross-border co-managees in case no search criteria are provided. For querying the cross-border co-managee minimum reserve information, the co-managing CB needs to use search criteria account servicer BIC;~~

- | if business sender is a leading CLM ~~a~~Account Holder and search criteria is not provided.
- | [...]

31 EUROSYSYSTEM UPDATE [Internal Review]: page 397 (CLM UDFS-chapter 12.2.2.3. The message in business context)

Text amendment

Usage case: Return Account (Scenario 074)

In this example, CLM is advising a CB that the PB owning the CLM MCA (Id "MDEEURCOBADEFFXXXCOBADEFFXXX") has a current **negative** balance of EUR3800,00 ~~De~~ but is in a which means that the bank is in a spillover situation and is unable to fulfill its overnight balance obligations.

32 EUROSYSYSTEM UPDATE [Internal Review]: page 445 (CLM UDFS-chapter 12.2.4.3. The message in business context)

Correction of text wrongly expressed in CR-081. In the sentence the verb is missing.

Message item	Utilisation
[...]	
Processing Validity Time Date Time Range To Date Time /Document/RtrTx/RptOrErr/BizRpt/TxRpt/TxOrErr/Tx/Pmt/PrcgVldtyTm/DtTmRg/ToDtTm	[...]
Instruction Copy /Document/RtrTx/RptOrErr/BizRpt/TxRpt/TxOrErr/Tx/Pmt/InstrCpy	Provides the message string of a cash transfer (order) entered via A2A (pacs.009/010 and camt.050) and U2A (pacs.009) consisting of BAH + Document. The message string is provided in CDATA format. For cash transfer (order)s not initiated via XML message <InstrCpy> is not provided.
[...]	

Table 136 - ReturnTransaction (camt.006)

33 EUROSYSYSTEM UPDATE [L2 Comment No. 18]: page 457 (CLM UDFS-chapter 12.2.4.3. The message in business context)

Correction of xpath

Message item	Utilisation
[...]	
Business Report – Transaction Report – Transaction – Payment	
Status Code Pending /Document/RtrTx/RptOrErr/BizRpt/TxRpt/TxOrErr/Tx/Pmt/Sts/Cd/ PDP Pdg	ACPD
[...]	

Table 144 - ReturnTransaction (camt.006) – usage case CB requesting all transactions (Scenario 107)

34 EUROSYSYSTEM UPDATE [Internal Review]: page 476 (CLM UDFS-chapter 12.2.5.3. The message in business context)

Make the Usage Case example bold

Right below table 149, the Usage case example should be bold (the text is there already; it just needs editing)

[Usage case example: camt.018_CLM_CurrentEventQuery_bs058.xml](#)

35 EUROSYSYSTEM UPDATE [Internal Review]: page 590 (CLM UDFS-chapter 13.1.3.3. The message in business context)

Correct wrong annotation

Original UETR /Document/FIToFIPmtCxlReq/Undrlyg/TxInf/OrgnIUETR	Provide the original end-to-end-reference UETR of the payment transaction.
--	---

Table 2 - FIToFIPaymentCancellationRequest (camt.056)

36 EUROSYSYSTEM UPDATE [Internal Review]: page 660 (CLM UDFS-chapter 14 Index and digital signature)

Change the order of the sub chapters to be in line with the RTGS UDFS structure.

~~14.1 Digital signature on business layer~~

~~14.2 Index of validation rules and error codes~~

[14.1 Index of validation rules and error codes](#)

[14.2 Digital signature on business layer](#)

37 EUROSYSYSTEM UPDATE [Internal Review]: page 660 (CLM UDFS-chapter 14.1 Index of validation rules and error codes)

Update of validation rules.

Note: SDD-CN 82 changes are already incorporated.

38 EUROSYSYSTEM UPDATE [ECB/TSWG Review]: page 655 (CLM UDFS-chapter 14.1 Index of validation rules and error codes)

new validation rule IV00320

Inbound message type	Response message type	Rule source	Validation rule ID	Validation rule description	Error code	Error description	Xpaths of inbound message elements for validation	Xpath of response message code element	Source rule name
Camt.056	Camt.029	ISO	IV00320	Only a valid Business identifier code	D008	[Invalid financial or non-financial	FIToFIPmtCxlReq/Assgnmt/Assgne/Agt/FinInstnId/BIC FI FIToFIPmtCxlReq/Assgnmt/Assgnr/Agt/FinInstnId/BIC FI	FIToFIPmtStsRpt/TxInfAndSts/StsRsnInf/Rsn/Prtry	AnyBIC

				<p>is allow ed. Busin ess identi fier code s for finan cial or nonfi nanci al institu tions are regist ered and publis hed by the ISO 9362 Regis tratio n Autho rity in the ISO direct ory of BICs, and consi sts of eleve n (11) conti guou s chara cters.</p>		<p>institu tion BIC in //Dyna mic error includ ing xpath //</p>			
--	--	--	--	---	--	---	--	--	--

39 EUROSYSYSTEM UPDATE [Internal Review]: page 831 (CLM UDFS-chapter 14.2.3 Message type 1: file with multiple ISO 20022 messages), page 834 (CLM UDFS-chapter 14.2.4 Message type 2: single ISO 20022 message)

Add a cross-reference to the ESMIG UDFS.

CLM UDFS-chapter 14.2.3 Message type 1: file with multiple ISO 20022 messages, page 831

For message type 1) the requirement in the ESMIG UDFS chapter "Digital Signature managed within the business Layer" states:

[...]

CLM UDFS-chapter 14.2.4 Message type 2: single ISO 20022 message, page 834

For message type 2) the requirement in **ESMIG** UDFS chapter "*Digital Signature managed within the business layer*" states:¹⁰⁰

[...]

RTGS UDFS**40 EUROSYSYSTEM UPDATE [Internal Review]: whole document (RTGS UDFS)**

Incorrect spelling "occurence" and replace it with "occurrence"

The word "occurrence" has been wrongly spelled in the UDFS. The main issues are with the camt.004 and in the annex of validation rules.

41 EUROSYSYSTEM UPDATE [Internal Review]

Alignment of links set on internal messages.

42 EUROSYSYSTEM UPDATE [Internal Review]

Removal of outdated footnotes due to implementation of T2S CRs.

43 EUROSYSYSTEM UPDATE [Internal Review]: page 43 (RTGS UDFS-chapter 2.2 Authentication and authorisation in RTGS)

Update of reference to RTGS UHB

[...]

The privileges, which are used in RTGS, are listed in the CRDM UDFS, chapter "*Privilege*" in the table "*RTGS functions*" and in the RTGS UHB, chapter "*List of ~~P~~Privileges*". Privileges, which are used for A2A only or U2A only, are marked accordingly.

[...]

44 EUROSYSYSTEM UPDATE [Internal Review]: page 48 (RTGS UDFS-chapter 2.5 Communication between RTGS and RTGS Actors)

Update of references to CRDM UDFS

[...]

For further information see the CRDM UDFS, Chapter "*Party ~~D~~ata ~~M~~management*".

[...]

45 EUROSYSYSTEM UPDATE [ECB JIRA CSLD-1374]: page 58 (RTGS UDFS chapter 3.1.6 Blocking/unblocking party)

Missing correction of SDD-CN-052 in multiplex CR0085

When blocking a party in CRDM, the blocking request includes a valid from date. If the valid from date is specified as the current business date, the blocking becomes effective immediately in all [T2 settlement](#) services the party is linked to.

46 EUROSYSYSTEM UPDATE [ECB/TSWG review]: page 75 (RTGS UDFS chapter 3.5 Local reference data)

Further clarification to be added

Note: Such activation is not necessary for the creation of payment orders in U2A which only require the assignment of specific privileges for an RTGS **a**Account **h**Holder in mixed scenario. [The CB activation is only necessary in case an RTGS Account Holder in mixed scenario wants to enter an interbank payment with code word BACP \(backup payment\).](#)

47 EUROSYSYSTEM UPDATE [Internal Review]: page 83 (RTGS UDFS-chapter 4.3 Overview description of the business day)

Update of reference to CRDM UHB

[...]

Reference data are captured in CRDM. Details are provided in the CRDM UDFS, chapter "Common Reference Data" and in the CRDM UHB, chapters "*Party Management*" [->and](#) "*Account Management*".

[...]

48 EUROSYSYSTEM UPDATE [external review via WP0109]: page 81 (RTGS UDFS chapter 4.4.1 Start-of-day period (18:45 – 19:30 CET))

Detailed clarification to be added under table 14

Table 14 - Events and processes during SoD

[After the event CRTI "Start of CLM RTS" is reached in CLM \(planned time 19:00 CET\) incoming A2A immediate liquidity transfers orders will be parked in RTGS until RRTI "RTGS RTS I Period" starts \(planned time 19:30 CET\).](#)

49 EUROSYSYSTEM UPDATE [ECB/TSWG review]: page 115 (RTGS UDFS chapter 5.3.5.1 Overview)

Detailed clarification to be added with a note

Please add note at the end of following sentence:

The RTGS Account Holder can enter the exceptional payment, or the CB of the affected RTGS Account Holder can act on behalf of the RTGS Account Holder and enter the exceptional payment.

Note: [In case the CB wants to enter a backup payment \(with code BACP\) on behalf of the RTGS Account Holder the CB activation of the RTGS Account Holder is also required.](#)

50 EUROSYSYSTEM UPDATE [Internal Review]: page 144 (RTGS UDFS-chapter 5.3.10 Cash Transfer order processing times)

The figure "Results of processing time validation" and the figure "Processing of cash transfer orders during RTGS business day" implemented by CR-85/CR-102 will be replaced through a new consolidated figure. Instead of referring in the results of processing time validation for incoming cash transfers to the settlement window in CLM during SoD, the wording was changed to the effect that they are parked during SoD, but will be rejected after the start of CLM RTS in order to correspond with the "Processing of cash transfer orders during RTGS business day".

[...]

~~Figure 1 - Results of processing time validation~~

During maintenance window and currency specific closing, all incoming cash transfer orders are parked prior to the business validation. The following figure provides detailed information about the processing of the different cash transfer orders depending on the RTGS business day phase.

Old figure 29 - Processing of cash transfer orders during RTGS business day:

	Customer payment order with current business date	Interbank payment order with current business date	Customer or interbank payment order with future business date (warehoused)	AS transfer order related to settlement procedure A, B and E	AS transfer order related to settlement procedure C and D	Liquidity transfer order (incl. AS-related LT)
<i>Change of business day</i> Planned time: 18:45 CET						
<i>Start of CLM RTS</i> Planned time: 19:00 CET						
<i>Start of RTGS RTS I</i> Planned time: 19:30 CET						
<i>Execution of standing order liquidity transfers in RTGS</i>						
<i>Start of RTGS RTS II</i> Planned time: 02:30 CET						
<i>Start of settlement window for interbank and customer payments</i>						
<i>Cut-off for customer payments</i> Planned time: 17:00 CET						
<i>Cut-off for RTGS RTS II</i> Planned time: 18:00 CET						
<i>EoD</i>						
<i>Close of service</i>						

New figure 29 - Processing of cash transfer orders during RTGS business day:

	Customer payment order with current business date	Interbank payment order with current business date	Customer or interbank payment order with future business date (warehoused)	AS transfer order related to settlement procedure A, B and E	AS transfer order related to settlement procedure C and D	Liquidity transfer order (incl. AS-related LT)
<i>Change of business day</i> Planned time: 18:45 CET						
<i>Start of CLM RTS</i> Planned time: 19:00 CET						
<i>Start of RTGS RTS I</i> Planned time: 19:30 CET						
<i>Execution of standing order liquidity transfers in RTGS</i>						
<i>Start of RTGS RTS II</i> Planned time: 02:30 CET						
<i>Start of settlement window for interbank and customer payments</i>						
<i>Cut-off for customer payments</i> Planned time: 17:00 CET						
<i>Cut-off for RTGS RTS II</i> Planned time: 18:00 CET						
<i>EoD</i>						
<i>Close of service</i>						

Results of processing time validation

- The incoming cash transfer order is accepted and processed after successful business validation.
- The incoming cash transfer order is rejected as the cut-off time for the cash transfer order type is reached.
- The incoming cash transfer order is parked after business validation. The cash transfer is created in the system, i.e. the cash transfer order is visible on cash transfer level.
- The incoming cash transfer order is parked before business validation. The business validation takes place in the next yellow or green phase.
- Note:** The cash transfer is not yet created in the system, i.e. the cash transfer order is neither visible on message nor on cash transfer level.
- The incoming cash transfer order is parked during SoD, but will be rejected after start of CLM RTS.

51 EUROSYSYSTEM UPDATE [Internal Review]: page 168 (RTGS UDFS-chapter 5.4.4.1 AS settlement procedure C)

Corrections

Please update table 59 as follows:

Phase	Step	Processing with	Description
End of procedure	[...]		
	19	RTGS	Once the procedure is closed, the remaining liquidity on sub-accounts is transferred back to the AS settlement banks' RTGS DCAs/RTGS CB Accounts. In case the procedure is not closed by until the end of the settlement window for AS transfers, RTGS transfers the remaining liquidity from the sub-accounts to the linked RTGS DCAs/RTGS CB Accounts automatically.
	20	RTGS via ESMIG to ancillary system	The ancillary system is informed via ReturnAccount (camt.004) on the back transfer of liquidity if the procedure is closed by the AS. In case the procedure is not closed by until the end of the settlement window for AS transfers, RTGS does not provide the ReturnAccount (camt.004) .
	[...]		

Table 59 - Start of procedure and liquidity provision for settlement on sub-accounts (AS settlement procedure C)

52 EUROSISTEM UPDATE [ECB/TSWG Review]: page 210 (RTGS UDFS-chapter 5.5.3.1.2 Effect and tapping of liquidity reservation)

Change "cash transfer" into "payment"

Please update table 78 as follows:

The following table illustrates the effect of the reservation functionality for the processing of ~~credit transfers~~ **payments** in RTGS by numeric examples:

Activity	Balance on RTGS DCA	Urgent reserve	High reserve	Available liquidity for normal cash transfers payments
Start	1,000	100	200	700
Settlement of ancillary system = 50 (debit)	950 ↓	50 ↓	200 ↔	700 ↔
Submitting high cash transfer payment to bank B = 200	750 ↓	50 ↔	0 ↓	700 ↔
Submitting normal cash transfer payment to bank C = 20	730 ↓	50 ↔	0 ↔	680 ↓
Settlement of ancillary system = 100 (credit)	830 ↑	50 ↔	0 ↔	780 ↑
Incoming high cash transfer payment from bank B = 50	880 ↑	50 ↔	0 ↔	830 ↑
Incoming normal cash transfer payment from bank C = 30	910 ↑	50 ↔	0 ↔	860 ↑
Set a new high reservation with immediate effect = 500	910 ↔	50 ↔	500 ↑	360 ↓
Settlement of urgent cash transfer payment in favour of CB = 450 (debit)	460 ↓	0 ↓	460 ↓	0 ↓

Table 78 - Usage of urgent and high reserve – numeric example

53 EUROSYSTEM UPDATE [Internal Review]: page 245 (RTGS UDFS-chapter 5.6.3.4

Specificities for delta set queries

Correction

The following additional rules apply:

[...]

- Delta set queries are possible for one or more accounts. In maximum, the user may query its full data scope within ~~RTGS the respective settlement service (RTGS or CLM)~~.

[...]

54 EUROSYSYSTEM UPDATE [Internal Review]: page 244 (RTGS UDFS-chapter 5.9.2 Business Case ID specificities)

Change chapter title to "Business Case ID specificities".

55 EUROSYSYSTEM UPDATE [Internal Review]: page 254 (RTGS UDFS-chapter 5.9.3 Cash Transfer Category and Business Case Codes for various features)

Double allocation of chapter name stemming from changes of CR0081, changing name of chapter

5.9.3 ~~Cash Transfer Category and Business Case Codes for various features~~ Business case codes and their usage

56 EUROSYSYSTEM UPDATE [Internal Review]: page 358 (RTGS UDFS-chapter 9.14.22.1 Description)

Correction

This sub-process is triggered

- for AS batches in AS settlement procedures A and B during information period by the process "Process AS batch revocation" and
- for AS transfer orders in AS settlement procedures E by "U2A revocation of AS transfer order in AS settlement procedure E".

57 EUROSYSYSTEM UPDATE [Internal Review]: page 392 (RTGS UDFS-chapter 10 Messages introduction)

Correct typo

[...]

- A complete message sample in XML format provides the reader with a concrete example on how the message is to be used in a specific business situation which refers to the particular instruction/query or usage. All data used are fictional.

58 EUROSYSYSTEM UPDATE [Internal Review]: page 527 (RTGS UDFS-chapter 12.2.3.3 The message in business context)

Remove one element

New Criteria - Search Criteria – Payment From

The search criteria <PaymentFrom> can be used to query cash transfer (order)s based on the business sender provided in the BAH, i.e. only for cash transfer (order)s initiated via an A2A message or payment order(s) initiated via U2A

~~SysId-not used~~

Member Identification BIC
[...]

Table 3 - GetTransaction (camt.005)

59 EUROSYSYSTEM UPDATE [Internal Review]: page 543 (RTGS UDFS-chapter 12.2.4.1 Overview and scope of the message)

Removal of one word (duplicate)

[...]

In the case of the use of delta set retrieval functionality, the reported information is reduced to ~~to~~ include only the modifications of cash transfer order status relative to the previous delta set query. For detailed information please refer to chapter [Delta set retrieval functionality for cash transfer \(order\)s \[\]](#) **Error! Bookmark not defined.**

60 EUROSYSYSTEM UPDATE [BBK L2 comment 2]: page 582-584 (RTGS UDFS-chapter 12.2.5.3 The message in business context)

Alignment of table 223 with annotations of Usage Guideline in MyStandards

Message item	Utilisation
Message Header	
Message ID /Document/ModfyTx/MsgHdr/MsgId	Value "NONREF" as the message ID is already part of the BAH
Payment Identification	
UETR /Document/ModfyTx/Mod/PmtId/LngBizId/UETR	Universally unique identifier to provide an end-to-end reference of a payment transaction.
Inter Bank Settlement Amount /Document/ModfyTx/Mod/PmtId/LngBizId/IntrBkSttlmAmt	Amount of money moved between the instructing agent and the instructed agent. <u>The originally instructed interbank settlement amount from the payment order.</u>
Inter Bank Settlement Date /Document/ModfyTx/Mod/PmtId/LngBizId/IntrBkSttlmDt	Date on which the amount of money ceases to be available to the agent that owes it and when the amount of money becomes available to the agent to which it is due. <u>The business day date provided in the payment order.</u>
Payment Method /Document/ModfyTx/Mod/PmtId/LngBizId/PmtMtd/XMLMsgNm	Message type with which the instruction has been initiated. <u>Must contain the XML message name identifier, i.e need to contain the full name, including the version number.</u> <u>For pacs.009, it must also indicate if the payment is a CORE or COV payment.</u> <u>Example: pacs.009.001.08COV and pacs.009.001.08CORE.</u>
Instructing Agent BIC /Document/ModfyTx/Mod/PmtId/LngBizId/InstgAgt/FinInstnl d/BICFI	BIC of the instructing agent in the original payment.
Instructing Agent LEI	If provided, this element is ignored by RTGS

Message item	Utilisation
/Document/ModifyTx/Mod/PmtId/LngBizId/InstgAgt/FinInstnl d/LEI	
Instructed Agent BIC /Document/ModifyTx/Mod/PmtId/LngBizId/InstgAgt/FinInstnl d/BICFI	BIC of the instructed agent in the original payment
Instructed Agent LEI /Document/ModifyTx/Mod/PmtId/LngBizId/InstgAgt/FinInstnl d/LEI	If provided, this element is ignored by RTGS
End to End Identification /Document/ModifyTx/Mod/PmtId/LngBizId/EndToEndId	Must be used for AS transfer orders
New Payment Value Set - <u>Priority</u> <u>The message block <Priority> can be used to modify either</u> <u>- the settlement priority or</u> <u>- the queue position specific for a settlement priority category.</u>	
Priority code /Document/ModifyTx/Mod/NewPmtValSet/Prty/Cd	<u>The priority of a payment order can only be changed if the</u> <u>payment order is not final or returned because of revoke or</u> <u>reject.</u> <u>Only the sender of a payment order message or its CB are</u> <u>able to change the priority of the payment order. The</u> <u>function cannot be used in case of payment order(s) from/to</u> <u>blocked parties.</u> <u>It is not possible to change from or to urgent priority.</u> Priority is a choice between a code: <ul style="list-style-type: none"> HIGH = High NORM = Normal
Priority Proprietary /Document/ModifyTx/Mod/NewPmtValSet/Prty/Prtry	Reordering is used to switch the position of the payment order to the top or bottom of the queue: <ul style="list-style-type: none"> DECR = Decrease INCR = Increase
<u>New Payment Value Set – Processing Validity Time</u> <u>The message block <ProcessingValidityTime> can be used to modify the requested execution time.</u>	

Message item	Utilisation
From Date Time /Document/ModfyTx/Mod/NewPmtValSet/PrcgVldtyTm/FrDtTm	In the case of backup payments with a back value date, the elements <FrDtTm> and <ToDtTm> have to use the current business date.
To Date Time /Document/ModfyTx/Mod/NewPmtValSet/PrcgVldtyTm/ToDtTm	In the case of backup payments with a back value date, the elements <FrDtTm> and <ToDtTm> have to use the current business date.

61 Table 4 - ModifyTransaction (camt.007)EUROSYSTEM UPDATE [Internal Review]: page 645 (RTGS UDFS-chapter 12.2.14.3 The message in business context)

Correction of text

Original Message Name Identification /Document/RsltnOfInvstgtn/CxIDtIs/TxInfAndSts/OrgnlGrpInf/OrgnlMsgNmId	[...]
Original Creation Date /Document/RsltnOfInvstgtn/CxIDtIs/TxInfAndSts/OrgnlGrpInf/OrgnlCreDtTm	Inbound: If provided, it will be ignored and forwarded by RTGS to the business receiver. [...]

Table 5 - ResolutionOfInvestigation (camt.029)

62 EUROSYSTEM UPDATE [ECB comment 40]: page 721-722 (RTGS UDFS-chapter 12.2.21.3 The message in business context)

Change the order of elements: Related Parties Debtor account comes before Related Parties Creditor Account

Message item	Utilisation
[...]	[...]
<u>Related Parties Debtor Account</u> /Document/BkToCstmrDbtCdtNtfctn/Ntfctn/Ntry/NtryDtIs/TxDtIs/RltdPtIs/DbtrAcct/Id/Othr/Id	<u>UDEEURCOBADEFFXXX16COBADEFFXXX0001</u>
Related Parties Creditor Account /Document/BkToCstmrDbtCdtNtfctn/Ntfctn/Ntry/NtryDtIs/TxDtIs/RltdPtIs/CdtrAcct/Id/Othr/Id	RDEEURCOBADEFFXXXCOBADEFFXXX
<u>Related Parties Debtor Account</u> /Document/BkToCstmrDbtCdtNtfctn/Ntfctn/Ntry/NtryDtIs/TxDtIs/RltdPtIs/DbtrAcct/Id/Othr/Id	<u>UDEEURCOBADEFFXXX16COBADEFFXXX0001</u>
Debtor Agent BIC BkToCstmrDbtCdtNtfctn/Ntfctn/Ntry/NtryDtIs/TxDtIs/RltdAgts/DbtrAgt/FinInstrId/BICFI	[...]

Table 6 - CreditNotification (camt.054) – procedure C successful settlement (Scenario 541)

63 EUROSYSYSTEM UPDATE [ECB comment 42]: page 723-724 (RTGS UDFS-chapter 12.2.21.3 The message in business context)

Change the order of elements: Related Parties Debtor account comes before Related Parties Creditor Account

Message item	Utilisation
[...]	[...]
<u>Related Parties Debtor Account</u> <u>/Document/BkToCstmrDbtCdtNtfctn/Ntfctn/Ntry/NtryDtIs/TxDtIs/RltdPties/DbtrAcct/Id/Othr/Id</u>	<u>UDEEURSOLADESTXXX16SOLADEST6000001</u>
Related Parties Creditor Account /Document/BkToCstmrDbtCdtNtfctn/Ntfctn/Ntry/NtryDtIs/TxDtIs/RltdPties/CdtrAcct/Id/Othr/Id	RDEEURSOLADESTXXXSOLADEST600
<u>Related Parties Debtor Account</u> <u>/Document/BkToCstmrDbtCdtNtfctn/Ntfctn/Ntry/NtryDtIs/TxDtIs/RltdPties/DbtrAcct/Id/Othr/Id</u>	<u>UDEEURSOLADESTXXX16SOLADEST6000001</u>
Debtor Agent BIC BkToCstmrDbtCdtNtfctn/Ntfctn/Ntry/NtryDtIs/TxDtIs/RltdAgts/DbtrAg/FinInstrId/BICFI	[...]

Table 7 - CreditNotification (camt.054) – procedure C successful settlement (Scenario 541)

64 EUROSYSYSTEM UPDATE [ECB comments 44, 45, 46, 47, 48, 50 and 52]: page 725-737 (RTGS UDFS-chapter 12.2.21.3 The message in business context)

Correction of typo in date- remove the '7' and keep the '8'

Message item	Utilisation
Message ID /Document/BkToCstmrDbtCdtNtfctn/GrpHdr/MsgId	NONREF
Creation date and time /Document/BkToCstmrDbtCdtNtfctn/GrpHdr/CreDtTm	2020-02-078T14:00:02.001+00:00
[...]	[...]
Booking Date /Document/BkToCstmrDbtCdtNtfctn/NtFctn/Ntry/BookgDt/DtTm	2020-02-078T14:00:01.001+00:00

Table 8 - DebitNotification (camt.054) – procedure C partial settlement (Scenario 544)

Message item	Utilisation
Message ID /Document/BkToCstmrDbtCdtNtfctn/GrpHdr/MsgId	NONREF
Creation date and time /Document/BkToCstmrDbtCdtNtfctn/GrpHdr/CreDtTm	2020-02-078T14:00:02.001+00:00
[...]	[...]
Booking Date /Document/BkToCstmrDbtCdtNtfctn/NtFctn/Ntry/BookgDt/DtTm	2020-02-078T14:00:01.001+00:00

Table 9 - DebitNotification (camt.054) – procedure C partial settlement (Scenario 544)

Message item	Utilisation
Message ID /Document/BkToCstmrDbtCdtNtfctn/GrpHdr/MsgId	NONREF
Creation date and time /Document/BkToCstmrDbtCdtNtfctn/GrpHdr/CreDtTm	2020-02-07 8 T14:50:01.001+00:00
[...]	[...]
Booking Date /Document/BkToCstmrDbtCdtNtfctn/NtFctn/Ntry/BookgDt/ DtTm	2020-02-07 8 T14:22:01.001+00:00

Table 10 - DebitNotification (camt.054) – procedure C partial settlement (Scenario 544)

Message item	Utilisation
Message ID /Document/BkToCstmrDbtCdtNtfctn/GrpHdr/MsgId	NONREF
Creation date and time /Document/BkToCstmrDbtCdtNtfctn/GrpHdr/CreDtTm	2020-02-07 8 T14:50:01.001+00:00
[...]	[...]
Booking Date /Document/BkToCstmrDbtCdtNtfctn/NtFctn/Ntry/BookgDt/ DtTm	2020-02-07 8 T14:22:01.001+00:00

Table 11 - CreditNotification (camt.054) – procedure C partial settlement (Scenario 544)

Message item	Utilisation
Message ID /Document/BkToCstmrDbtCdtNtfctn/GrpHdr/MsgId	NONREF
Creation date and time /Document/BkToCstmrDbtCdtNtfctn/GrpHdr/CreDtTm	2020-02-07 8 T15:00:02.001+00:00
[...]	[...]
Booking Date /Document/BkToCstmrDbtCdtNtfctn/NtFctn/Ntry/BookgDt/ DtTm	2020-02-07 8 T15:00:01.001+00:00

Table 12 - CreditNotification (camt.054) – procedure C partial settlement (Scenario 544)

Message item	Utilisation
Message ID /Document/BkToCstmrDbtCdtNtfctn/GrpHdr/MsgId	NONREF
Creation date and time /Document/BkToCstmrDbtCdtNtfctn/GrpHdr/CreDtTm	2020-02-07 8 T15:00:02.001+00:00
[...]	[...]
Booking Date /Document/BkToCstmrDbtCdtNtfctn/NtFctn/Ntry/BookgDt/ DtTm	2020-02-07 8 T15:00:01.001+00:00

Table 13 - CreditNotification (camt.054) – procedure C partial settlement (Scenario 544)

Message item	Utilisation
Message ID /Document/BkToCstmrDbtCdtNtfctn/GrpHdr/MsgId	NONREF
Creation date and time /Document/BkToCstmrDbtCdtNtfctn/GrpHdr/CreDtTm	2020-02-07 8 T15:00:02.001+00:00
[...]	[...]
Booking Date	2020-02-07 8 T15:00:01.001+00:00

Message item	Utilisation
/Document/BkToCstmrDbtCdtNtfctn/NtFctn/Ntry/BookgDt/DtTm	

Table 14 - CreditNotification (camt.054) – procedure C partial settlement (Scenario 544)

65 EUROSYSYSTEM UPDATE [ECB comment 55]: page 741 (RTGS UDFS-chapter 12.2.21.3 The message in business context)

Remove duplicate row in table 329

[...]	
Instruction Identification /Document/BkToCstmrDbtCdtNtfctn/NtFctn/Ntry/NtryDtIs/TxDtIs/Refs/InstrId	Inp998b561-InsId3
Instruction Identification /Document/BkToCstmrDbtCdtNtfctn/NtFctn/Ntry/NtryDtIs/TxDtIs/Refs/InstrId	Inp998b561-InsId3
[...]	

Table 15 - CreditNotification (camt.054) – procedure D successful settlement with liquidity adjustment (Scenario 561)

66 EUROSYSYSTEM UPDATE [Internal Review]: page 761 (RTGS UDFS-chapter 12.2.22.3 The message in business context)

Correction of text

Original UETR /Document/FIToFIPmtCxlReq/Undrlyg/TxInf/OrgnIUETR	Provides the original end-to-end reference <u>UETR</u> of the underlying payment transaction
--	---

Table 16 - FIToFIPaymentCancellationRequest (camt.056)

67 EUROSYSYSTEM UPDATE [ECB Sanity Check]: page 779 (RTGS UDFS chapter 12.3.1.2 Schema)

Correct typo

[...]

Specifies the *BAH* of the business message to which this business message relates. It can be used when replying to a query; it can also be used when cancelling or amending.

68 EUROSYSYSTEM UPDATE [Internal Review]: page 790 (RTGS UDFS-chapter 12.4.1.1 Overview and scope of the message)

Correct typos

[...]

RTGS does not send the ~~Pp~~acs.002 PaymentStatusReport message in case of U2A instructed payment orders.

69 EUROSYSYSTEM UPDATE [Internal Review]: page 824 and 826 (RTGS UDFS-chapter 12.4.3.3 the message in business context)

Correct typo in name of 2 tables: table 374 and 375

Table 17 - CustomerCreditTransfer (pacs.008) – usage case Successful return - Inbound (Scenario 023)

Table 18 - CustomerCreditTransfer (pacs.008) – usage case Successful return - Outbound (Scenario 023)

70 EUROSYSYSTEM UPDATE [Internal Review]: page 849-850 (RTGS UDFS-chapter 12.4.4.3 The message in business context)

Correct typo in tables 385 and 386

Message item	Utilisation
[...]	
Debtor Agent BIC /Document/FICdtTrf/CdtTrfTxInf/DbtrAgt/FinInstnId/BICFI	COBADEFFXXX
Creditor Agent BIC /Document/FICdtTrf/CdtTrfTxInf/CdtrAgt/FinInstnId/BICFI	SYBKDEK22HAM
Creditor BIC /Document/FICdtTrf/CdtTrfTxInf/Cdtr/FinInstnId/BICFI	SYBKDK22CPH

Table 19 - FinancialInstitutionCreditTransfer (pacs.009) – usage case settlement including indirect participants – Inbound (Scenario 076)

Message item	Utilisation
[...]	
Debtor Agent BIC /Document/FICdtTrf/CdtTrfTxInf/DbtrAgt/FinInstnId/BICFI	COBADEFFXXX
Creditor Agent BIC /Document/FICdtTrf/CdtTrfTxInf/CdtrAgt/FinInstnId/BICFI	SYBKDEK22HAM
Creditor BIC /Document/FICdtTrf/CdtTrfTxInf/Cdtr/FinInstnId/BICFI	SYBKDK22CPH

Table 20 - FinancialInstitutionCreditTransfer (pacs.009) – usage case settlement including indirect participants – Outbound (Scenario 076)

71 EUROSYSYSTEM UPDATE [Internal Review]: page 953 (RTGS UDFS-chapter 13.1 Index of validation rules and error codes)

Update of validation rules.

Note: SDD-CN 82 changes are already incorporated.

72 EUROSYSYSTEM UPDATE [Internal Review]: page 950 (RTGS UDFS-chapter 13.1 Index of validation rules and error codes)

Typo

✉ Files and messages that were received in RTGS are submitted through various validations. The validation process verifies that all messages fulfil all predefined criteria and can be further processed. The user is informed about the result via the corresponding business response message.

73 EUROSYSYSTEM UPDATE [Internal Review]: page 1443 (RTGS UDFS-chapter 13.2.3 Message type 1: file with multiple ISO 20022 messages), page 1446 (RTGS UDFS-chapter 13.2.4 Message type 2: single ISO 20022 message)

Add a cross-reference to the ESMIG UDFS.

RTGS UDFS-chapter 13.2.3 Message type 1: file with multiple ISO 20022 messages, page 1443

For message type 1) the requirement in the [ESMIG](#) UDFS chapter "*Digital Signature managed within the business Layer*" states:

[...]

RTGS UDFS-chapter 13.2.4 Message type 2: single ISO 20022 message, page 1446

For message type 2) the requirement in [ESMIG](#) UDFS chapter "*Digital Signature managed within the business layer*" states:⁵⁶

[...]

DWH UDFS

74 EUROSYSYSTEM UPDATE [CSLD-1237]: page 506 (DWH UDFS-new chapter 3.6 CLM/RTGS inbound XML messages available in the DWH)

Add list of inbound CLM/RTGS xml messages stored in the DWH

The following list contains all xml message types available in the DWH which were processed in CLM or RTGS as inbound messages. Query messages as well as all outbound messages are not transferred to the DWH.

<u>Source</u>	<u>Message type</u>	<u>Description</u>
<u>CLM</u>	<u>camt.048</u>	<u>Modify reservation</u>
<u>CLM</u>	<u>camt.049</u>	<u>Delete reservation</u>
<u>CLM</u>	<u>camt.050</u>	<u>Liquidity credit transfer</u>
<u>CLM (CB specific)</u>	<u>camt.056</u>	<u>FItoFI Cancellation request</u>
<u>CLM (CB specific)</u>	<u>camt.998</u>	<u>Modify credit line, Authorize penalty MR, Insert value of MR, Insert balance MR</u>
<u>CLM (CB specific)</u>	<u>pacs.009</u>	<u>FI Credit transfer</u>
<u>CLM (CB specific)</u>	<u>pacs.010</u>	<u>FI Direct debit</u>
<u>RTGS</u>	<u>camt.007</u>	<u>Modify transaction</u>
<u>RTGS</u>	<u>camt.011</u>	<u>Modify limit</u>
<u>RTGS</u>	<u>camt.012</u>	<u>Delete limit</u>
<u>RTGS</u>	<u>camt.048</u>	<u>Modify reservation</u>
<u>RTGS</u>	<u>camt.049</u>	<u>Delete reservation</u>
<u>RTGS</u>	<u>camt.050</u>	<u>Liquidity credit transfer</u>
<u>RTGS</u>	<u>camt.056</u>	<u>FItoFI Payment cancellation request</u>
<u>RTGS</u>	<u>pacs.004</u>	<u>Payment return</u>
<u>RTGS</u>	<u>pacs.008</u>	<u>Customer credit transfer</u>
<u>RTGS</u>	<u>pacs.009</u>	<u>FI Credit transfer</u>
<u>RTGS</u>	<u>pacs.010</u>	<u>FI Direct debit</u>
<u>RTGS</u>	<u>pain.998</u>	<u>AS transfer initiation (ASTI)</u>

75 EUROSYSYSTEM UPDATE [TSWG UDFS review issue 1]: page 10 (DWH UDFS-chapter 3.1 table 1: A2A message envelope contents)

Update table to match xsd already published on the ECB homepage

Tag	Description	Format/length
<DWHRptRcptID>	BIC of the report recipient party	CHAR(11)
<DWHUsr>	User login name of the user, that scheduled the report. It is the same as used in ESMIG for logging in.	CHAR(35)
<DWHPtySrvcLink>	Contains the service, whose data are transported in the report. Possible values: T2_C (T2 service) T2S (T2S service)	CHAR(4)
<DWHRptName>	Name of the report (first 35 characters). For predefined reports it is the name of the report as described in chapter Predefined reports [Error! Bookmark not defined.], for user-defined report it is the name provided by the user when setting up the report in the DWH.	CHAR(35)
<DWHRptFileName>	File Name of the report which is a free text that can be provided by the user in the DWH and used for internal routing on customer side	CHAR(85)
<DWHExecTime>	Execution Time of the DWH report	CHAR(28)
<DWHRptID>	A technical identifier unique for this report instance provided by the DWH – in case of problems it enables the operational team to unambiguously identify the report.	CHAR(35)
<DWHRptCont>	Contains the report itself in the chosen format.	BLOB

Table 21 - A2A message envelope contents

Example:

```
<?xml version="1.0" encoding="UTF-8"?>
<Response>
  <DWHEnvelope xmlns:xsi="http://www.w3.org/2001/XMLSchema-instance" xsi:noNamespaceSchemaLocation="
DWHReport.xsd">
    <DWHHdr>
      <DWHRptRcptID>AAAADEBBXXX</DWHRptRcptID>
      <DWHUsr>5874569852</DWHUsr>
    </DWHHdr>
    <DWHRpt>
      <DWHRptName>IDC04 - Credit line/IDC averages an</DWHRptName>
      <DWHRptFileName>DWH report IDC04_DEPT_Z110-STAT</DWHRptFileName>
      <DWHExecTime>Tue Feb 16 16:38:00 CET 2022</DWHExecTime>
      <DWHRptID>A67587Z7899gf53856hgik875Frt654i8F5</DWHRptID>
      <DWHRptCont><![CDATA[BLOB-Report]]></DWHRptCont>
    </DWHRpt>
  </DWHEnvelope>
</Response>
```


DWH UHB

76 EUROSYSYSTEM UPDATE [Internal Review]: page 167ff (DWH UHB-chapter 5.5.2 (DEX02 – Data extraction request))

Complete redesign of this chapter due to new technical and functional approach to this predefined report

Context of usage

This report is used to ~~submit requests for schedule~~ the extraction of CLM, ~~and~~ RTGS ~~and~~ CRDM data for a ~~given date (range) defined period (current business day, current week, current month)~~. CBs can retrieve (transaction level and party) data within their own data scope. ~~The data extraction period is limited to a maximum of five business days.~~ The data is provided as ~~one single several~~ files in CSV format via A2A, it does not provide a GUI screen for the report result. ~~Central banks with large transactional volumes should schedule their report on a daily basis for more manageable file sizes.~~

This report can be used by CB users only.

Report access

This report can be reached in the following way:

[Team Content] >> [Predefined Reports] >> [DEX – Data Extraction Reports] >> [DEX02]

Screenshot – prompt

(Will be delivered within the new UHB version since development is still ongoing).

Prompt description

DEX02 – Report description – prompt screen	
Field label	Description
Date from <u>Schedule frequency</u>	You can select the <u>frequency from the list</u> date by clicking on the calendar. Possible values: <ul style="list-style-type: none"> • <u>Daily</u> • <u>Weekly</u> • <u>Monthly</u> This field is mandatory.
Date to	You can select the end date of the period, for which the report should contain the data by clicking on the calendar. For valid report results, the current day cannot be selected. This field is mandatory.
Party BIC	You can use this search and select prompt to be able to search for the party BIC or short name you wish to extract data for. One or several parties can be selected. In case the user leaves this field free, all party BICs belonging to the user's data scope are selected. This field is optional.

Table 22 - DEX02 - Prompt description

Screenshot - output screen

No output screen available – report result is only provided via CSV files.

Output description *(this chapter will completely replace the current chapter, the old values are thus not shown here as they will be completely removed)*

The report output sent via A2A consists of six files described hereafter.

Party Reference Data File Specification

A party in CRDM denotes any legal or organisational entity required in a Eurosystem market Infrastructure for processing. In this context, the party reference data file contains the attributes of party in their state as of the business day that the user selected.

<u>No.</u>	<u>Logical Name</u>	<u>Data Type</u>	<u>Mandatory/Optional</u>	<u>Definition</u>
<u>1</u>	<u>Party Identifier</u>	<u>INTEGER</u>	<u>Mandatory</u>	<u>This attribute contains the unique technical identifier of the Party in Common Reference Data Management (CRDM) or in CRSS for historic data.</u>
<u>2</u>	<u>Business Day</u>	<u>DATE</u>	<u>Mandatory</u>	<u>This field specifies the business day of the Eurosystem market infrastructure for which the extraction took place.</u>
<u>3</u>	<u>LEI</u>	<u>VARCHAR(20)</u>	<u>Optional</u>	<u>This field contains the Legal Entity Identifier that identifies a party according to ISO 17442.</u>
<u>4</u>	<u>BIC</u>	<u>VARCHAR(13)</u>	<u>Mandatory</u>	<u>This field contains the Business Identifier Code of a party according to ISO 9362.</u>
<u>5</u>	<u>Country Code</u>	<u>VARCHAR(2)</u>	<u>Mandatory</u>	<u>This field contains the ISO country code of the jurisdiction in which the party is legally registered.</u>
<u>6</u>	<u>Party Long Name</u>	<u>VARCHAR(350)</u>	<u>Mandatory</u>	<u>This field contains the full legal name of a party.</u>
<u>7</u>	<u>Party Short Name</u>	<u>VARCHAR(35)</u>	<u>Mandatory</u>	<u>This field contains the user-define mnemonic to identify a party.</u>
<u>8</u>	<u>Party Type</u>	<u>VARCHAR(4)</u>	<u>Mandatory</u>	<u>This field provides the classification of the party in CRDM to identify its role in the respective Eurosystem market infrastructure.</u> <u>Code Description</u> <u>0Operator</u> <u>1Central Bank</u> <u>2Payment Bank</u> <u>3Ancillary System</u>
<u>9</u>	<u>Party Opening Date</u>	<u>DATE</u>	<u>Mandatory</u>	<u>This fields defines the actual date that the CSD or NCB established the contractual relationship with the party, i.e. the date from which the party is eligible to process its business transactions on the Eurosystem market infrastructure.</u>
<u>10</u>	<u>Party Close Date</u>	<u>DATE</u>	<u>Mandatory</u>	<u>This field defines the actual date that the contractual relationship of the party with CSD or NCB ended, i.e. the date as of which the party no longer is eligible to process its business transactions on the Eurosystem market infrastructure.</u>
<u>11</u>	<u>Deletion Status</u>	<u>VARCHAR(4)</u>	<u>Mandatory</u>	<u>This field specifies whether the record is active or is logically deleted.</u> <u>Code Description</u> <u>DELE Deleted</u> <u>ACTV Active</u>

Cash Account Reference Data File Specification

The cash account reference data file contains the attributes of a cash account in their state as of the business day that the user selected.

<u>No.</u>	<u>Logical Name</u>	<u>Data Type</u>	<u>Mandatory/ Optional</u>	<u>Definition</u>
1	<u>Cash Account Identifier</u>	<u>INTEGER</u>	<u>Mandatory</u>	<u>This attribute contains the unique technical identifier of the cash account in Common Reference Data Management (CRDM)</u>
2	<u>Business Day</u>	<u>DATE</u>	<u>Mandatory</u>	<u>This field specifies the business day of a Eurosystem market infrastructure.</u>
3	<u>Cash Account Number</u>	<u>VARCHAR(34)</u>	<u>Mandatory</u>	<u>This field documents the externally visible cash account number that uniquely identifies a cash account across all Eurosystem market infrastructure services.</u>
4	<u>Cash Account BIC</u>	<u>VARCHAR(11)</u>	<u>Optional</u>	<u>This field specifies the BIC of the cash account according to ISO 9362.</u>
5	<u>Currency Code</u>	<u>CHAR(3)</u>	<u>Mandatory</u>	<u>This field specifies the ISO currency code for the cash account.</u>
6	<u>Linked Cash Account Identifier</u>	<u>INTEGER</u>	<u>Optional</u>	<u>This field specifies the cash account identifier of the linked cash account. The determination of whether a link from one cash account to another cash account exists takes place using this attribute. When this field specifies a value, then this field contains a valid cash account to which the cash account, as identified by the cash account identifier, is linked.</u>
7	<u>Linked Cash Account Identifier</u>	<u>VARCHAR(34)</u>	<u>Optional</u>	<u>This field specifies the cash account number of the linked cash account. The determination of whether a link from one cash account to another cash account exists takes place using this attribute. When this field specifies a value, then this field contains a valid cash account to which the cash account, as identified by the cash account number, is linked.</u>
8	<u>Linked Cash Account Type</u>	<u>VARCHAR(4)</u>	<u>Optional</u>	<u>This field specifies the type of relationship of the cash account link:</u> <ul style="list-style-type: none"> ▪ <u>DCA to linked MCA and vice versa (for automated LTs)</u> ▪ <u>ML and OD accounts to related Default MCA</u> ▪ <u>RTGS sub account to RTGS DCA</u> ▪ <u>ECB Mirror-Account to Default CLM CB Account</u>
9	<u>Party Identifier</u>	<u>INTEGER</u>	<u>Mandatory</u>	<u>This field specifies the unique party identifier of the party in Common Reference Data (CRDM) that holds the cash account.</u>

<u>10</u>	<u>Account Type</u>	<u>VARCHAR(4)</u>	<u>Mandatory</u>	<p><u>This field provides the role of the cash account in a Eurosystem market infrastructure</u></p> <p><u>Code Description</u></p> <p><u>RTGS:</u></p> <p><u>RDCARTGS DCA</u></p> <p><u>RCBARTGS CB account</u></p> <p><u>ATEC AS technical account for procedures A and B (ATEC)</u></p> <p><u>ATEC AS technical account for procedures C and E (ATEC)</u></p> <p><u>ATEC AS technical account for procedure D (ATEC)</u></p> <p><u>AGACAS guarantee funds account</u></p> <p><u>RSAARTGS sub-account</u></p> <p><u>RTACRTGS dedicated transit account</u></p> <p><u>CLM:</u></p> <p><u>CMCA CLM Main cash account</u></p> <p><u>CCACCLM CB account</u></p> <p><u>ONDP Overnight deposit account)</u></p> <p><u>MGLD Marginal lending account</u></p> <p><u>CEMA ECB mirror account</u></p> <p><u>CECSB ECB account</u></p> <p><u>CTEC CLM technical account for ECONS II</u></p> <p><u>CTTS CLM dedicated transit account for T2S</u></p> <p><u>CTTI CLM dedicated transit account for TIPS</u></p> <p><u>CTRT CLM dedicated transit account for RTGS</u></p> <p><u>ECONS2:</u></p> <p><u>ECCA Contingency Cash Account</u></p> <p><u>ECCBCB Contingency Account</u></p> <p><u>ECTA Contingency Technical Account</u></p> <p><u>ECTR Contingency Transit Account</u></p> <p><u>T2S:</u></p> <p><u>RTGSRTGS Dedicated Transit Account</u></p> <p><u>NCBAT2S Central Bank Account</u></p> <p><u>CSHAT2S Dedicated Cash Account</u></p> <p><u>TIPS</u></p> <p><u>TACC TIPS Accounts</u></p> <p><u>TTAC Transit Accounts</u></p>
<u>11</u>	<u>Cash Account Number</u>	<u>VARCHAR(34)</u>	<u>Mandatory</u>	<u>This field documents the externally visible ISO 20022 cash account number that uniquely identifies a cash account across all services.</u>
<u>12</u>	<u>Ceiling Amount</u>	<u>DECIMAL(31,0)</u>	<u>Optional</u>	<u>This field specifies the ceiling (highest amount) for the balance on a on a cash account, the breach of which result in a notification to the cash manager.</u>
<u>13</u>	<u>Closing Date</u>	<u>DATE</u>	<u>Mandatory</u>	<u>This field defines the actual date that cash account is no longer eligible for settlement on the Eurosystem market infrastructure.</u>
<u>14</u>	<u>Floor Amount</u>	<u>DECIMAL(31,0)</u>	<u>Optional</u>	<u>This field specifies the floor (lowest amount) for the balance on a on a cash account, the breach of which result in a notification to the cash manager.</u>

<u>15</u>	<u>Linked Account Type</u>	<u>VARCHAR(4)</u>	<u>Optional</u>	<p><u>This field determines whether the cash account has a linked cash account associated to it in the CRDM data. CLM-RTGS does not use this field for its processing. This field also specifies the type of cash account to which the cash account is linked.</u></p> <p><u>Code Description</u> <u>CASH Cash Account</u> <u>EXTA External RTGS Account</u></p> <p><u>The determination of whether a link from one cash account to another cash account exists takes place using the attributes HK Linked Account Technical Identifier. In combination with the value of the Link Type in the Cash Account Satellite entry of the linked account, it specifies one of the following tapes of relationships from a business perspective:</u></p> <ul style="list-style-type: none"> ▪ <u>DCA to linked MCA and vice versa (for automated LTs)</u> ▪ <u>ML and OD accounts to related Default MCA</u> ▪ <u>RTGS sub account to RTGS DCA</u> ▪ <u>ECB Mirror-Account to Default CLM CB Account</u>
<u>16</u>	<u>Opening Date</u>	<u>DATE</u>	<u>Mandatory</u>	<u>This field defines the actual date that cash account is eligible for settlement on the Eurosystem market infrastructure.</u>
<u>17</u>	<u>Credit Based Only Flag</u>	<u>SMALLINT</u>	<u>Mandatory</u>	<p><u>This field specifies whether the cash account is a credit-based only account, i.e. whether the cash account owner must maintain a positive balance on the cash account to settle pending cash transfer orders.</u></p> <p><u>Code Description</u> <u>0 No (not requiring cover)</u> <u>1 Yes (requiring cover)</u></p>

Cash Account Aggregation Group File Specification

This report extracts for all cash accounts of a central bank, the aggregation groups of which a cash account is a member. A cash account may be assigned to multiple groups of the same type depending on the aggregation group type.

<u>No.</u>	<u>Logical Name</u>	<u>Data Type</u>	<u>Mandatory/Optional</u>	<u>Definition</u>
<u>1</u>	<u>Party or Cash Account Identifier</u>	<u>INTEGER</u>	<u>Mandatory</u>	<u>This attribute contains the unique technical identifier of the cash account or the party in Common Reference Data Management (CRDM) depending on the value in the field <i>Party or Account</i>.</u>
<u>2</u>	<u>Party or Account</u>	<u>CHAR(1)</u>	<u>Mandatory</u>	<u>This field specifies the type of identifier that the grouping contains.</u> <u>Code Description</u> <u>P Party</u> <u>CA Cash Account</u>
<u>3</u>	<u>Business Day</u>	<u>DATE</u>	<u>Mandatory</u>	<u>This field specifies the business day of a Eurosystem market infrastructure.</u>
<u>4</u>	<u>Aggregation Leader Party BIC</u>	<u>CHAR(13)</u>	<u>Optional</u>	<u>This field contains the Business Identifier Code of the aggregation party leader according to ISO 9362.</u>
<u>5</u>	<u>Cash Account Number or Party BIC</u>	<u>VARCHAR(34)</u>	<u>Mandatory</u>	<u>This field documents the externally visible cash account number that uniquely identifies a cash account across all Eurosystem market infrastructure services or the Party BIC, depending on the value in the field <i>Party or Account</i>.</u>
<u>6</u>	<u>Aggregation Group Type</u>	<u>VARCHAR(4)</u>	<u>Mandatory</u>	<u>This field specifies the type of grouping for parties or cash accounts.</u> <u>Code Description</u> <u>BANK Banking Group</u> <u>ACCM Account Monitoring Group</u> <u>LQTR Liquidity Transfer Group</u> <u>SETL Settlement Bank Account Group</u>
<u>7</u>	<u>Aggregation Group Name</u>	<u>VARCHAR(35)</u>	<u>Mandatory</u>	<u>This field specifies the data aggregation name. This column is restricted to the SWIFT X Character Set via BRs at U2A and A2A level.</u>

Cash Account Balance and Liquidity File Specification

The Cash Account Liquidity file provides the end-of-day states of various balances in CLM-RTGS for a cash account. The DWH does not receive an intraday history. CLM-RTGS always overwrites the record when an amount changes.

<u>No.</u>	<u>Logical Name</u>	<u>Data Type</u>	<u>Mandatory/Optional</u>	<u>Definition</u>
<u>1</u>	<u>Cash Account Identifier</u>	<u>INTEGER</u>	<u>Mandatory</u>	<u>This field specifies the hash key to identify uniquely the link between the Cash Account Liquidity Link and the Cash Account Liquidity Satellite tables.</u>
<u>2</u>	<u>Cash Account Number</u>	<u>VARCHAR(34)</u>	<u>Mandatory</u>	<u>This field documents the externally visible ISO 20022 cash account number that uniquely identifies a cash account across all services.</u>
<u>3</u>	<u>Cash Account Holder Party BIC</u>	<u>VARCHAR(13)</u>	<u>Mandatory</u>	<u>This field specifies the party BIC of the cash account holder as a party in in Common Reference Data Management (CRDM).</u>
<u>4</u>	<u>Business Day</u>	<u>DATE</u>	<u>Mandatory</u>	<u>This field specifies the business day of the Eurosystem market infrastructure for which the extraction took place.</u>
<u>5</u>	<u>Liquidity</u>	<u>DECIMAL(31,2)</u>	<u>Optional</u>	<u>This field specifies the available liquidity for the cash account.</u>
<u>6</u>	<u>Liquidity Position</u>	<u>DECIMAL(31,2)</u>	<u>Mandatory</u>	<u>This field specifies the position of the liquidity.</u>
<u>7</u>	<u>Liquidity at Start of Day</u>	<u>DECIMAL(31,2)</u>	<u>Mandatory</u>	<u>This field specifies the liquidity at the start of the day</u>
<u>8</u>	<u>Account Type</u>	<u>SMALLINT</u>	<u>Mandatory</u>	<u>This field specifies the type of account.</u> <u>Code Description</u> <u>0RTGS DCA</u> <u>1RTGS CB account</u> <u>3AS technical account for procedures A and B</u> <u>4AS technical account for procedures C and E</u> <u>5AS technical account for procedure D</u> <u>7AS guarantee funds account</u> <u>9RTGS sub-account</u> <u>40 RTGS dedicated transit account</u>
<u>9</u>	<u>Country Code CB</u>	<u>CHAR(2)</u>	<u>Mandatory</u>	<u>This field specifies the country code of the central bank.</u>
<u>10</u>	<u>Pending Urgent Reservation</u>	<u>DECIMAL(31,2)</u>	<u>Optional</u>	<u>This field specifies the pending urgent priority reservation.</u>
<u>11</u>	<u>Position of the Urgent Reservation</u>	<u>DECIMAL(31,2)</u>	<u>Optional</u>	<u>This field specifies the position of the urgent priority reservation.</u>
<u>12</u>	<u>Urgent Reservation at Start of Day</u>	<u>DECIMAL(31,2)</u>	<u>Optional</u>	<u>This field specifies the amount of the urgent priority reservation at the start of the day.</u>
<u>13</u>	<u>Pending High Reservation</u>	<u>DECIMAL(31,2)</u>	<u>Optional</u>	<u>This field specifies the pending high priority reservation.</u>
<u>14</u>	<u>Position of the High Reservation</u>	<u>DECIMAL(31,2)</u>	<u>Optional</u>	<u>This field specifies the position of the high priority reservation.</u>
<u>15</u>	<u>High Reservation at Start of Day</u>	<u>DECIMAL(31,2)</u>	<u>Optional</u>	<u>This field specifies the amount of the high priority reservation at the start of the day.</u>

16	<u>Limit Disabled Flag</u>	<u>SMALLINT</u>	<u>Optional</u>	<p><u>This field specifies the whether all bilateral limits for the current day are zero or set to zero so that for this participant no bilateral or multilateral limits should be applied.</u></p> <p><u>Code Description</u> <u>0No - there are bilateral limits</u> <u>1Yes - neither multilateral limit nor bilateral limits will be applied</u></p>
17	<u>Defined Multilateral Limit</u>	<u>DECIMAL(31,2)</u>	<u>Optional</u>	<u>This field specifies the extended relationship limit ('collecting' limit).</u>
18	<u>Defined Multilateral Limit Timestamp</u>	<u>TIMESTAMP</u>	<u>Optional</u>	<u>This field specifies the date and time of the last update of the multilateral limit.</u>
17	<u>Pending Multilateral Limit</u>	<u>DECIMAL(31,2)</u>	<u>Optional</u>	<p><u>This field specifies the multilateral limit amount to be activated.</u></p> <p><u>It is an intra-day change (reduction) of the multilateral limit, which cannot be activated at present because of a higher claim of the limit. Nevertheless, it is taken into account by the entry disposition process in order to reduce the claim to the desired limit amount.</u></p>
18	<u>Pending Multilateral Limit Timestamp</u>	<u>TIMESTAMP</u>	<u>Optional</u>	<u>This field specifies the timestamp of the last activation of the multilateral limit.</u>
19	<u>Claimed Multilateral Limit of an Algo</u>	<u>DECIMAL(31,2)</u>	<u>Optional</u>	<u>This field specifies the current amount of a multilateral limit that the settlement algorithm reserved at the start of day.</u>
21	<u>Position of the Multilateral Limit</u>	<u>DECIMAL(31,2)</u>	<u>Optional</u>	<u>This field specifies the current (permanently updated) position of the multilateral limit.</u>
22	<u>Multilateral Limit at Start of Day</u>	<u>DECIMAL(31,2)</u>	<u>Optional</u>	<u>This field specifies the multilateral limit at the beginning of the day.</u>
23	<u>Bilateral Limits Sum</u>	<u>DECIMAL(31,2)</u>	<u>Optional</u>	<u>This field specifies the total of all bilateral limits.</u>
24	<u>Bilateral Limits Sum Timestamp</u>	<u>TIMESTAMP</u>	<u>Optional</u>	<u>This field specifies the date and time of the last update of the sum of the bilateral limits.</u>
25	<u>Bilateral Limit Positions Sum</u>	<u>DECIMAL(31,2)</u>	<u>Optional</u>	<u>This field specifies the sum of all current positions of the bilateral limit.</u>
26	<u>Amount of Automatic Marginal Lending used</u>	<u>DECIMAL(31,2)</u>	<u>Optional</u>	<u>This field specifies the amount of automatic marginal lending used.</u>
27	<u>Amount of Marginal Lending on Request used</u>	<u>DECIMAL(31,2)</u>	<u>Optional</u>	<u>This field specifies the amount of marginal lending on request used.</u>

28	<u>Pending CBO Reservation</u>	<u>DECIMAL(31,2)</u>	<u>Optional</u>	<u>This field specifies the pending amount of the CBO reservation, i.e. it is the amount change to the CBO reservation that CLM could not yet apply. If a reservation order can only be partly changed, it is set with the remainder.</u>
29	<u>Position of the CBO Reservation</u>	<u>DECIMAL(31,2)</u>	<u>Optional</u>	<u>This field specifies the current (permanently updated) position of the CBO reservation.</u>
30	<u>CBO Reservation at Start of Day</u>	<u>DECIMAL(31,2)</u>	<u>Optional</u>	<u>This field specifies the amount of the CBO reservation at the beginning of the day. It is taken over from the standing order amount for a CBO reservation and may be less than that amount if it can only be partly executed. The amount can also be 0 if no standing order exists.</u>
31	<u>Pending Seizure of Funds Reservation</u>	<u>DECIMAL(31,2)</u>	<u>Optional</u>	<u>This field specifies the pending amount of the seizure of funds reservation. If a reservation order can only be partly set, it is set with the remainder.</u>
32	<u>Liquidity Position of the Seizure of Funds Reservation</u>	<u>DECIMAL(31,2)</u>	<u>Optional</u>	<u>This field specifies the current (permanently updated) position of the seizure of funds reservation. The funds are not part of the current liquidity position. The seizure of funds reservation is always taken away from the current liquidity position. It is different from the CBO reservation, which is always part of the liquidity position.</u>
33	<u>Seizure of Funds Reservation at Start of Day</u>	<u>DECIMAL(31,2)</u>	<u>Optional</u>	<u>This field specifies the amount of the seizure of funds reservation at the beginning of the day. It is taken over from the seizure of funds reservation position amount at the end of the previous business day.</u>
34	<u>Credit Line</u>	<u>DECIMAL(31,2)</u>	<u>Optional</u>	<u>This field specifies the granted disposition fund (credit line). Entries exist for Default MCAs. They can be adjusted by GUI orders, 'modify credit line' requests or 'connected payments'.</u>
35	<u>Credit Line at Start of day</u>	<u>DECIMAL(31,2)</u>	<u>Optional</u>	<u>This field specifies the granted disposition fund (credit line) at the beginning of the day (carried-over from the previous business day) for those cash accounts that have a credit line. The field is zero for all other types of cash accounts.</u>
36	<u>Pending Credit Line</u>	<u>DECIMAL(31,2)</u>	<u>Optional</u>	<u>This field specifies the pending credit line amount, i.e. the amount change to the credit line that CLM could not yet apply. If a credit line change order per U2A or connected payment cannot not settled the pending amount is stored here.</u>
37	<u>Pending Credit Line Mark</u>	<u>SMALLINT</u>	<u>Optional</u>	<u>This field specifies the pending credit line mark.</u> <u>Code Description</u> <u>0None</u> <u>1Fixed</u> <u>2Delta</u>

Cash Transfers Orders/Cash Transfer File SpecificationThis file provides all cash transfers of a central bank for a given T2 business day.

<u>No.</u>	<u>Logical Name</u>	<u>Data Type</u>	<u>Mandatory/Optional</u>	<u>Definition</u>
1	<u>Cash Transfer Identifier</u>	<u>DECIMAL(16,0)</u>	<u>Mandatory</u>	<u>This attribute contains the technical identifier of the cash transfer order in CLM or RTGS.</u>
2	<u>Business Day</u>	<u>DATE</u>	<u>Mandatory</u>	<u>This field specifies the business day of a Eurosystem market infrastructure.</u>
3	<u>Credit Cash Account Identifier</u>	<u>INTEGER</u>	<u>Mandatory</u>	<u>This attribute contains the unique technical identifier of the credit cash account in Common Reference Data Management (CRDM).</u>
4	<u>Credit Cash Account Number</u>	<u>VARCHAR(34)</u>	<u>Mandatory</u>	<u>This field documents the externally visible ISO 20022 credit cash account number that uniquely identifies a cash account across all services.</u>
5	<u>Credit Cash Account Holder Party BIC</u>	<u>VARCHAR(13)</u>	<u>Mandatory</u>	<u>This field specifies the party BIC of the credit cash account holder as a party in in Common Reference Data Management (CRDM).</u>
6	<u>Debit Cash Account Identifier</u>	<u>INTEGER</u>	<u>Mandatory</u>	<u>This attribute contains the unique technical identifier of the debit cash account in Common Reference Data Management (CRDM).</u>
7	<u>Debit Cash Account Number</u>	<u>VARCHAR(34)</u>	<u>Mandatory</u>	<u>This field documents the externally visible ISO 20022 debit cash account number that uniquely identifies a cash account across all services.</u>
8	<u>Debit Cash Account Holder Party BIC</u>	<u>VARCHAR(13)</u>	<u>Mandatory</u>	<u>This field specifies the party BIC of the debit cash account holder as a party in in Common Reference Data Management (CRDM).</u>
9	<u>Related AS Party Identifier</u>	<u>INTEGER</u>	<u>Optional</u>	<u>This field specifies the unique technical identifier of the ancillary system as a party in in Common Reference Data Management (CRDM).</u>
10	<u>Related AS Party BIC</u>	<u>VARCHAR(13)</u>	<u>Optional</u>	<u>This field specifies the party BIC of the ancillary system as a party in in Common Reference Data Management (CRDM).</u>
11	<u>Related AS Counterpart Identifier</u>	<u>INTEGER</u>	<u>Optional</u>	<u>This field specifies the unique technical identifier of the counterpart ancillary system as a party in in Common Reference Data Management (CRDM).</u>
12	<u>Related AS Counterpart BIC</u>	<u>VARCHAR(13)</u>	<u>Optional</u>	<u>This field specifies the Party BIC of the counterpart ancillary system as a party in in Common Reference Data Management (CRDM).</u>
13	<u>From Service</u>	<u>VARCHAR(4)</u>	<u>Mandatory</u>	<u>This field documents the source service or service component that originated the cash transfer.</u> <u>Code Description</u> <u>CLMT2 Service Central Liquidity Management</u> <u>RTGST2 Real-time Gross Settlement</u> <u>T2STARGET2-Securities</u> <u>TIPS TARGET Instant Payments</u>
14	<u>To Service</u>	<u>VARCHAR(4)</u>	<u>Mandatory</u>	<u>This field documents the target service or service component that settles the cash transfer.</u> <u>Code Description</u> <u>CLMT2 Service Central Liquidity Management</u> <u>RTGST2 Real-time Gross Settlement</u> <u>T2STARGET2-Securities</u> <u>TIPS TARGET Instant Payments</u>

<u>9</u>	<u>Currency Code</u>	<u>CHAR(3)</u>	<u>Mandatory</u>	<u>This field specifies the three-character ISO 4217 currency code.</u>
<u>10</u>	<u>Unique End-to-End Transaction Reference (UETR)</u>	<u>VARCHAR(40)</u>	<u>Optional</u>	<u>This field contains a universal unique identifier to provide an end-to-end reference for a payment transaction (payment order).</u> <u>Usage: pacs.008, pacs.009, pacs.010 and camt.050.</u>
<u>11</u>	<u>Instruction Identifier</u>	<u>VARCHAR(35)</u>	<u>Optional</u>	<u>This field shows the unique identification, set by the message sender, to identify the instruction (payment order).</u> <u>Usage: pacs.008, pacs.009, pacs.010 and camt.050 (although optional for camt.050).</u>
<u>12</u>	<u>End-to-End Identification</u>	<u>VARCHAR(35)</u>	<u>Optional</u>	<u>This field shows the unique identification, set by the instruction initiator, to identify the instruction (payment order) and be passed on, unchanged, throughout the entire end-to-end-chain.</u> <u>Usage: pacs.008, pacs.009, pacs.010 and camt.050.</u>
<u>13</u>	<u>Cash Transfer Property</u>	<u>SMALLINT</u>	<u>Mandatory</u>	<u>This field documents the high-level category into which the cash transfer order falls for processing in CLM-RTGS.</u> <u>Code Description</u> <u>0Original payment</u> <u>1Return payment</u> <u>2Original cancelled</u> <u>3Not bookable</u>
<u>14</u>	<u>Message Type</u>	<u>VARCHAR(15)</u>	<u>Mandatory</u>	<u>The field specifies the ISO 20022 message type from which the cash transfer order was generated.</u> <ul style="list-style-type: none"> ▪ <u>pain.998</u> ▪ <u>camt.050</u> ▪ <u>camt.056</u> ▪ <u>pacs.004</u> ▪ <u>pacs.009</u> ▪ <u>pacs.008</u> ▪ <u>pacs.010</u>
<u>15</u>	<u>Settlement Type</u>	<u>SMALLINT</u>	<u>Mandatory</u>	<u>This field specifies the process that settled the cash transfer order.</u> <u>Code Description</u> <u>00 Pending (not yet booked)</u> <u>01 Entry disposition</u> <u>02 Express algorithm</u> <u>03 Settlement of a connected payment</u> <u>04 AS settlements not booked by Entry disposition or algorithm</u> <u>11 Algorithm 1</u> <u>12 Algorithm 2</u> <u>13 Algorithm 3</u> <u>14 Algorithm 4</u> <u>15 Algorithm 5</u> <u>20 Liquidity transfer and other immediately booked ICM orders</u> <u>80 End-of-day booking</u>
<u>16</u>	<u>Settlement Timestamp</u>	<u>TIMESTAMP</u>	<u>Mandatory</u>	<u>This field specifies the actual date and time that the cash transfer order settled.</u>

<u>17</u>	<u>First Processing Timestamp</u>	<u>TIMESTAMP</u>	<u>Optional</u>	<u>This field specifies the actual date and time of the first processing of an MGPY2000 cash transfer order. It is used to monitor the performance of processing in RTGS.</u>
<u>18</u>	<u>First Queuing Timestamp</u>	<u>TIMESTAMP</u>	<u>Mandatory</u>	<u>In the case that the processing queues a cash transfer order for settlement, this field specifies the actual date and time that initial queuing of the cash transfer order took place. The contents of this field does not change if a subsequent queueing of the cash transfer order take place. This field does not specify a value if a cash transfer order settles without queueing.</u>
<u>19</u>	<u>Original Amount</u>	<u>DECIMAL(31,2)</u>	<u>Optional</u>	<u>This field specifies the instructed amount of the cash transfer order.</u>
<u>20</u>	<u>Cash Transfer Status Before Currency Specific Closing</u>	<u>SMALLINT</u>	<u>Optional</u>	<u>This field specifies the final state of a cash transfer order at the end-of-day closing for a settlement currency.</u> <u>Code Description</u> <u>005 Warehoused</u> <u>015 Queued</u> <u>020 Earmarked</u> <u>505 Settled</u> <u>506 Partially settled</u> <u>515 Rejected</u> <u>520 Revoked</u>
<u>21</u>	<u>Cash Transfer Status</u>	<u>SMALLINT</u>	<u>Mandatory</u>	<u>This field specifies the current processing status of a cash transfer order. However, at end of the business day, the status specifies the final state of the cash transfer order.</u> <u>Code Description</u> <u>561 settled</u> <u>562 not settled due to removal EOD or during the day</u> <u>563 reversed</u> <u>565 payment revoked including disagreement after blocking</u>
<u>22</u>	<u>Error Code</u>	<u>VARCHAR(4)</u>	<u>Mandatory</u>	<u>This field specifies an error code in the case an error occurs in the processing of the cash transfer order.</u>
<u>23</u>	<u>AS Balance After Booking Debit</u>	<u>DECIMAL(31,2)</u>	<u>Optional</u>	<u>This field documents the balance of the debited cash account after the settlement of an AS transfer order. For example, in the case of AS return account.</u>
<u>24</u>	<u>AS Balance After Booking Credit</u>	<u>DECIMAL(31,2)</u>	<u>Optional</u>	<u>This field documents the resulting balance an AS subaccount or AS mirror account balance of the credited cash account after the settlement of an AS transfer order. RTGS report this balance in an AS Transfer Notice of a cross-AS cash transfer (CR493).</u>
<u>25</u>	<u>Entry Timestamp</u>	<u>TIMESTAMP</u>	<u>Mandatory</u>	<u>Timestamp of the first entry of the data. Part of the update control block.</u>

29	<u>Classification</u>	<u>VARCHAR(10)</u>	<u>Mandatory</u>	<p><u>This field provide the category and classification of the transfer order according to the Eurosystem statistical classification framework.</u></p> <p><u>Code Description</u></p> <p><u>For CLM:</u> <u>C.10.00 CLM Intra</u> <u>C.10.20 CLM LT RTGS</u> <u>C.10.30 CLM LT T2S</u> <u>C.10.40 CLM LT TIPS</u> <u>C.11.01 Open Market Operations</u> <u>C.11.02 Standing Facilities</u> <u>C.11.03 Reserve and Account Management</u> <u>C.11.04 Inter Central Bank transactions</u> <u>C.11.05 Connected payments for credit line changes</u> <u>C.11.06 Non-euro area Central Bank operations</u> <u>C.11.09 Other (including cash transactions)</u> <u>C.12 Billing</u> <u>C.13 TARGET Balances</u> <u>C.14.01 Levelling out of closed accounts</u> <u>C.14.02 ECONS2 back transfers</u> <u>C.14.03 Seizure of funds</u> <u>C.19 Other</u></p> <p><u>For RTGS:</u> <u>R.20.00 RTGS Intra</u> <u>R.20.10 RTGS LT CLM</u> <u>R.20.30 RTGS LT T2S</u> <u>R.20.40 RTGS LT TIPS</u> <u>R.21.01 Payments Interbank</u> <u>R.21.02 Payments Customer</u> <u>R.21.09 Other</u> <u>R.22.01 AS Transactions HVPS</u> <u>R.22.02 AS Transactions RPS</u> <u>R.22.03 AS Transactions IPS</u> <u>R.22.04 AS Transactions SSS</u> <u>R.22.05 AS Transactions FXS</u> <u>R.22.06 AS Transactions MMS</u> <u>R.22.07 AS Transactions CCP</u> <u>R.22.09 AS Transactions Other</u> <u>R.23.01 Levelling out of closed accounts</u> <u>R.29 Other</u></p>
26	<u>Liquidity Transfer Type</u>	<u>VARCHAR(10)</u>	<u>Mandatory</u>	<p><u>This field specifies categorises liquidity transfer orders according to their processing characteristics in T2.</u></p> <p><u>Code Description</u> <u>A Automated</u> <u>IImmediate</u> <u>Q Rule-based Queued</u> <u>R Rule-Based Floor/Ceiling</u> <u>S Standing order</u></p>
27	<u>Liquidity Transfer Direction</u>	<u>VARCHAR(10)</u>	<u>Mandatory</u>	<p><u>This field provides for a liquidity transfer order the category for the exchange of funds.</u></p> <p><u>Code Description</u> <u>S Intra-service liquidity</u> <u>O Outgoing liquidity</u> <u>IIncoming liquidity</u> <u>TTechnical liquidity transfer (only for CLM)</u></p>

<u>28</u>	<u>Settlement Window</u>	<u>VARCHAR(10)</u>	<u>Mandatory</u>	<p><u>This field specifies the period during the T2 business day in which the cash transfer order settled.</u></p> <p><u>Code Description</u> <u>1 CLM real-time settlement – Transactions settled during the CLM Real Time Settlement phase</u> <u>2 RTGS real-time settlement I – Transactions settled during the RTGS Settlement Window 1</u> <u>3 RTGS real-time settlement II – Transactions settled during the RTGS Settlement Window 2</u></p>
<u>29</u>	<u>Initiator Type</u>	<u>VARCHAR(10)</u>	<u>Mandatory</u>	<p><u>This field documents the type of party that instructed the cash transfer order.</u></p> <p><u>Code Description</u> <u>A Orders instructed by a third party which is an AS</u> <u>B Orders instructed by a third party which is a central bank</u> <u>C Orders instructed directly by the credit participant</u> <u>D Orders instructed directly by the debited participant</u> <u>P Orders instructed by a third party which is neither an AS nor a central bank</u> <u>S System generated transactions</u></p>
<u>30</u>	<u>Return Transaction</u>	<u>VARCHAR(10)</u>	<u>Mandatory</u>	<p><u>This field documents whether the cash transfer order is a return payment.</u></p> <p><u>Code Description</u> <u>N Not return payment</u> <u>Y Return payment</u></p>
<u>31</u>	<u>Contingency Payments</u>	<u>VARCHAR(10)</u>	<u>Mandatory</u>	<p><u>This field documents whether the cash transfer order is a contingency payment.</u></p> <p><u>Code Description</u> <u>M Mandated payments – payments that a central bank instructs on behalf of its RTGS Account Holder in contingency situations</u> <u>B Back-up payments – payments inputted via an RTGS function on exceptional basis when an RTGS Account Holder through an incident on its side loses its ability to send payment orders to RTGS</u> <u>Null Not applicable</u></p>
<u>32</u>	<u>Component System Payments</u>	<u>VARCHAR(10)</u>	<u>Mandatory</u>	<p><u>This field documents whether the cash account involved in the cash transfer order belong to the same central banks or different central banks.</u></p> <p><u>Code Description</u> <u>E Extra-Component system payments, for which the debited and the credited accounts belong to different central banks</u> <u>I Intra-Component system payments, for which the debited and the credited accounts belong to the same central bank</u></p>

<u>33</u>	<u>Intragroup Transactions</u>	<u>VARCHAR(10)</u>	<u>Mandatory</u>	<u>This field specifies whether the cash transfer order is intra-group.</u> <u>Code Description</u> <u>Null Not applicable</u> <u>Y intra-group cash transfer</u> <u>N Not an intra-group cash transfer</u>
<u>34</u>	<u>Correspondent Banking</u>	<u>VARCHAR(10)</u>	<u>Mandatory</u>	<u>This field provides the corresponding banking classification of the cash transfer order.</u> <u>Code Description</u> <u>Null Not applicable</u> <u>B the transaction is correspondent banking on both sending and receiving sides</u> <u>N the transaction is not correspondent banking on either side</u> <u>R the transaction is correspondent banking on the receiving side and not on the sending side</u> <u>S the transaction is correspondent banking on the sending side and not on the receiving side</u>
<u>35</u>	<u>CLM Central Bank Operation Subtype</u>	<u>VARCHAR(10)</u>	<u>Optional</u>	<u>This field provides the classification for the central bank operation underlying the cash transfer order.</u> <u>Code Description</u> <u>Null Not applicable</u> <u>MLA Automated Marginal Lending</u> <u>MLO Marginal Lending on request (setting-up order)</u> <u>MLR Marginal Lending reimbursement</u> <u>MLI Interest payment for Marginal Lending</u> <u>ODO Overnight Deposits (setting-up order)</u> <u>ODV Overnight Deposits reverse order</u> <u>ODR Overnight Deposits refund</u> <u>ODI Interest payment for Overnight Deposits</u> <u>OMR Repayment of principal or interest</u> <u>OMS Set-up of operation</u> <u>RMI Interest payment for minimum reserves</u> <u>REI Interest payment for excess of reserves</u> <u>REI Interest payment for excess of reserves</u> <u>RMP Penalties for minimum reserves</u> <u>RAI Interest payment on accounts</u> <u>RMO Other reserve management transactions</u> <u>SFO Other standing facilities transactions</u>

Business Day File Specification

This file provides the execution times of business events on a specific user-selected business day.

<u>No.</u>	<u>Logical Name</u>	<u>Data Type</u>	<u>Mandatory/ Optional</u>	<u>Definition</u>
1	<u>Business Day</u>	<u>DATE</u>	<u>Mandatory</u>	<u>This field specifies the business day of a Eurosystem market infrastructure.</u>
2	<u>Event Code</u>	<u>VARCHAR(4)</u>	<u>Mandatory</u>	<p><u>This field documents an event the T2 schedules and executes during the business day.</u></p> <p><u>Code Description for CLM Events</u> <u>CT01 Load CLM business day</u> <u>CSOD Change of business day</u> <u>CRTI Start of CLM RTS</u> <u>CESO Execution of standing orders in CLM</u> <u>CSCC Start of currency specific closing</u> <u>CSMW Start of non-optional maintenance window</u> <u>CEMW End of non-optional maintenance window</u> <u>CECC End of currency specific closing</u> <u>CSOM Start of optional maintenance window</u> <u>CEOM End of optional maintenance window</u> <u>CCII Cut-off for CLM RTS</u> <u>T2DP Data propagation for T2</u> <u>CEOD Start of EoD processing</u> <u>CCSF General cut-off for standing facilities</u> <u>CCMLCB cut-off for marginal lending on request</u> <u>CCOS EoD - close of service</u></p> <p><u>Code Description for RTGS Events</u> <u>RT01 Load RTGS business day</u> <u>RSOD Change of business day</u> <u>RRTI Start of RTGS RTS</u> <u>RESO Execution of standing orders in RTGS</u> <u>RSCC Start of currency specific closing</u> <u>RSMW Start of non-optional maintenance window</u> <u>REMW End of non-optional maintenance window</u> <u>RECC End of currency specific closing</u> <u>RRII Start of RTGS RTS II</u> <u>RSIC Start of settlement window for interbank and customer payments</u> <u>RSOM Start of optional maintenance window</u> <u>REOM End of optional maintenance window</u> <u>RCOC Cut-off for customer payments</u> <u>RCII Cut-off for RTGS RTS II</u> <u>RLSO Execution of standing orders after last settlement attempt in RTGS</u> <u>REOD Start of EoD processing</u> <u>RCOS EoD - close of service</u></p>
3	<u>Scheduled Timestamp</u>	<u>TIMESTAMP</u>	<u>Mandatory</u>	<u>This field specifies the date and time at which the execution of the event is to take place during the business day.</u>
4	<u>Actual Timestamp</u>	<u>TIMESTAMP</u>	<u>Mandatory</u>	<u>This field specifies the date and time at which the execution of the event has been rescheduled to during the business day. This timestamp contains the value of the scheduled timestamp (TS_SCHED) when there was no rescheduling.</u>

BDM UDFS**77 EUROSYSYSTEM UPDATE [CSLD SDD-CN-PBR-072]: page 32 (BDM UDFS-chapter 3.1 List of messages)**

Addition of a note regarding the use of namespace prefixes
--

Note: the annotations in the MyStandards repository represent the links between the xml fields and the respective data model attributes.

Regarding the use of namespace prefixes, BDM does not encourage but accepts and processes valid inbound messages containing those.

However, when sending outbound messages, BDM does not re-use nor add namespace prefixes.

BILL UDFS

78 EUROSYSYSTEM UPDATE [CSLD SDD-CN-PBR-072]: page 45 (BILL UDFS-chapter 3.1 List of messages)

Addition of a note regarding the use of namespace prefixes

Regarding the use of namespace prefixes, BILL does not encourage but accepts and processes valid inbound messages containing those.

However, when sending outbound messages, BILL does not re-use nor add namespace prefixes.

CRDM UDFS

79 EUROSYSYSTEM UPDATE [CSLD SDD-CN-PBR-072]: page 163 (CRDM UDFS-chapter 3.1 List of messages)

Addition of a note regarding the use of namespace prefixes

Note: the annotations in the MyStandards repository represent the links between the xml fields and the respective data model attributes.

Regarding the use of namespace prefixes, CRDM does not encourage but accepts and processes valid inbound messages and inbound files composed of one or several messages containing those.

However, when sending outbound messages, CRDM does not re-use nor add namespace prefixes.

80 EUROSYSYSTEM UPDATE [CSLD SDD-CN-PBR-075]: page 266 (CRDM UDFS-chapter 4.5.3.9. Report Configuration - New)

Amendment of Execution Time field for Report Configuration

Flat file column	Excel Column	Column Name	Format	Description	Rules	Occurs per Record	Occurs per Group
[...]							
13	M	Execution Time	TIME	Time of the execution of the report.	<p>Mandatory for non-TIPS reports if Event Type is not filled in.</p> <p>Not allowed if Event Type is used.</p> <p>Not allowed for TIPS Reports, CLM Repository, CLM Repository update, RTGS Directory and RTGS Directory update, RTGS Statement of Accounts, Update or</p>		0..1

					CLM Statement of Accounts. Mandatory otherwise unless Event Type is used.		
[...]							

81 EUROSYSYSTEM UPDATE [Internal Review]: page 266 (CRDM UDFS-chapter 4.5.3.9. Report Configuration - New)

Amendment of Event Type field for Report Configuration

Flat file column	Excel Column	Column Name	Format	Description	Rules	Occurs per Record	Occurs per Group
[...]							
13	M	Event Type	CHAR (4)	Code of the event type that triggers the report.	Mandatory for non-TIPS reports if Execution Time is not filled in. Not allowed if Execution Time is used. Not allowed for TIPS Reports, CLM Repository, CLM Repository update, RTGS Directory and RTGS Directory update. Mandatory otherwise unless Execution Time is used.		0..1
[...]							

82 EUROSYSYSTEM UPDATE [Internal review]: page 33 (CRDM UDFS-chapter 1.2.2.1.2 Privilege)

Update of list of privileges of table 14 RTGS functions

PRIVILEGE	USER FUNCTION	DATA SCOPE
[...]		
RTGS Enter Customer Credit Transfer	RTGS Enter Customer Credit Transfer (except mandated payment)	Cash accounts within own System Entity (for CB) or owned by own Party (for RTGS account holder); only U2A This privilege cannot be combined with the privilege "RTGS Enter <u>Exceptional</u> Customer Credit Transfer in <u>Contingency Situation</u> "
RTGS Enter Exceptional Customer Credit Transfer	RTGS Enter Exceptional Customer Credit Transfer	Cash accounts within own System Entity (for CB), own Cash Accounts (for Payment Bank) <u>This privilege cannot be combined with the U2A privilege for Enter Customer Credit Transfer, only U2A</u>
RTGS Enter Financial Institution Credit Transfer (except mandated payments)	RTGS Enter Financial Institution Credit Transfer (except mandated)	Cash accounts within own System Entity (for CB) or owned by own Party (for RTGS account holder or CB account holder or Ancillary System); only U2A {CSLD CR0109} This privilege cannot be combined with the U2A privilege for 'RTGS Enter <u>Exceptional</u> Financial Institution Credit Transfer for exceptional cases '
RTGS Enter Exceptional Financial Institution Credit Transfer	RTGS Enter Exceptional Financial Institution Credit Transfer	Cash accounts within own System Entity (for CB), own Cash accounts (for Payment Bank) <u>This privilege cannot be combined with the U2A privilege for Enter Financial Institution Credit Transfer; only U2A</u>

ECONS II UDFS

83 EUROSYSYSTEM UPDATE [CSLD SDD-CN-PBR-072]: page 99 (ECONS II UDFS-chapter 3.2.2 Technical validation at transport and business level)

Addition of a note regarding the use of namespace prefixes
--

Rejection occurring for both schema validation and additional technical validation check is reported in the same way, by using a ReceiptAcknowledgement.

Regarding the use of namespace prefixes, ECONSII does not encourage but accepts and processes valid inbound messages containing those.

However, when sending outbound messages, ECONSII does not re-use nor add namespace prefixes.

84 EUROSYSYSTEM UPDATE [CSLD SDD-CN-PBR-080]: page 24 (ECONS II UDFS-chapter 1.4.1 Liquidity Transfer), page 38 (ECONS II UDFS-chapter 1.5.2 Liquidity Management)

Editorial clarification on ECONS II UDFS about Contingency Transit Account usage
--

ECONS II UDFS-chapter 1.4.1 Liquidity Transfer, page 24

Table 1 – Liquidity Transfer data

Attribute	Description
[...]	...
Debiting BIC	The BIC authorised to settle, via the Authorised Account User setup, on either a debited (i) CB Contingency Account, (ii) PB Contingency Account or (iii) Contingency Transit Account to be used by the ECB or by the relevant CB for any other currency different from Euro-CMS in A2A mode.
Debiting Account Status	Blocking status for the contingency account to be debited for Liquidity Transfer. Exhaustive list of possible values: - Blocked; - Unblocked.
Crediting Account	CB Contingency Account, Payment Bank Contingency Account or Contingency Transit Account to be credited.
Crediting BIC	The BIC authorised to settle, via the Authorised Account User setup, on either a credited (i) CB Contingency Account, (ii) PB Contingency Account or (iii) Contingency Transit Account to be used by the CB of the debtor or by CMS in A2A mode.
[...]	

ECONS II UDFS-chapter 1.5.2 Liquidity Management, page 38

The following internal liquidity movements are allowed:

- between a CB Contingency Account and a Payment Bank Contingency Account (or vice-versa); it is triggered only by CBs in A2A or U2A;
- from a Contingency Transit Account to a Payment Bank Contingency Account: it is triggered by the ECB (only in U2A);
- from a Contingency Transit Account to a Payment Bank Contingency Account: it is triggered by the ECB, **or by the relevant CB for any other currency different from Euro (only in A2A or U2A);**

BILL UHB

85 EUROSYSYSTEM UPDATE [JIRA issue CSLD-1384]: page 28 (BILL UHB-chapter 2.2.1.1 Invoice Data – Search/List Screen), page 32 (BILL UHB-chapter 2.2.1.2 Invoice Data – Details Screen)

Removal of status Cancelled for Invoice Data
--

BILL UHB-chapter 2.2.1.1 Invoice Data – Search/List Screen, page 28

Invoice Data - List	
[...]	
Status	Shows the status of the Invoice Data (generated, corrected, cancelled , included in an invoice).
[...]	

BILL UHB-chapter 2.2.1.2 Invoice Data – Details Screen

Invoice Data	
[...]	
Status	Shows the status of the Invoice Data (generated, corrected, cancelled , included in an invoice).
[...]	

CRDM UHB

**86 EUROSYSYSTEM UPDATE [CSLD SDD-CN-PBR-066]: page 522 (CRDM UHB-chapter 4.3.2.11
 Authorised Account User – Search/List Screen), page 523 (CRDM UHB-chapter 4.3.2.12
 Authorised Account User – New/Edit Screen)**

SDD-CN-PBR-066 is not yet approved.

Amendment of Business rules DCC2006, DCU2006 and DCD2006
--

CRDM UHB-4.3.2.11 Authorised Account User – Search/List Screen, page 522

Reference for error message	Field or Button	Error Text	Description
DCD2006	Restore button	Authorised Account User existing for BIC pattern, Service and Currency	At any given point in time, the BIC Pattern, <u>if defined as a BIC11 with a Direct or Indirect Participation Type</u> , must not overlap with other <u>BIC Patterns Direct or Indirect BIC11s</u> defined for other Cash Accounts in the same Service and Currency. <u>If defined with multi-addressee or addressable BIC Participation Type, the BIC Pattern must not overlap with other multi-addressee or addressable BICs defined for other Cash Accounts in the same Service and Currency.</u>

CRDM UHB-4.3.2.12 Authorised Account User – New/Edit Screen, page 523

Reference for error message	Field or Button	Error Text	Description
DCC2006	Submit button	Authorised Account user existing for BIC pattern, Service and Currency	At any given point in time, the BIC Pattern, <u>if defined as a BIC11 with a Direct or Indirect Participation Type</u> , must not overlap with other <u>BIC Patterns Direct or Indirect BIC11s</u> defined for other Cash Accounts in the same Service and Currency. <u>If defined with multi-addressee or addressable BIC Participation Type, the BIC Pattern must not overlap with other multi-addressee or addressable BICs defined for other Cash Accounts in the same Service and Currency.</u>
[...]			
DCU2006	Submit button	Authorised Account user existing for BIC Pattern, Service and Currency	At any given point in time, the BIC Pattern, <u>if defined as a BIC11 with a Direct or Indirect Participation Type</u> , must not overlap with other <u>BIC Patterns Direct or Indirect BIC11s</u> defined for other Cash Accounts in the same Service and Currency. <u>If defined with multi-addressee or addressable BIC Participation Type, the BIC Pattern must not overlap with other multi-addressee or addressable BICs defined for</u>

			other Cash Accounts in the same Service and Currency.
[...]			

87 EUROSYSYSTEM UPDATE [CSLD SDD-CN-PBR-075]: page 90 (CRDM UHB-chapter 2.3.1.8 Party Service Link – New/Edit Screen) page 232 (CRDM UHB-chapter 2.3.4.5 Report Configurations – Search/List Screen), page 238 (CRDM UHB-chapter 2.3.4.6 Report Configuration – Details Screen), page 242 (CRDM UHB-chapter 2.3.4.7 Report Configuration – New/Edit Screen), page 595 (CRDM UHB-chapter 4.3.2.56 Party Service Link – New/Edit Screen), page 600 (CRDM UHB-chapter 4.3.2.57 Report Configuration – Search/List Screen), page 602 (CRDM UHB-chapter 4.3.2.58 Report Configuration – Details Screen), page 604 (CRDM UHB-chapter 4.3.2.59 Report Configuration – New/Edit Screen)

Introduction of Business Rule DPU4022 for Party Service Link
Introduction of Business Rule DRCV155, DRUV155, DRDV155 and amendment of DRCV125 for Report Configuration
Amendment of Scheduled Time field for Report Configuration

CRDM UHB-chapter 2.3.1.8 Party Service Link – New/Edit Screen, page 90

CLM Configuration Data	
[...]	
Minimum Reserve Obligation	Select whether the party is subject to the minimum reserve requirement and through which method it is calculated. Possible values are: <ul style="list-style-type: none"> <input type="checkbox"/> Direct <input type="checkbox"/> Pool <input type="checkbox"/> Indirect <input type="checkbox"/> No Reference for error message <input type="checkbox"/> : <ul style="list-style-type: none"> <input type="checkbox"/> DPC4014 <input type="checkbox"/> DPU4013 <input type="checkbox"/> DPU4014 <input checked="" type="checkbox"/> DPU4022 This field is mandatory. In case the Party is a CB or a PB and the Eurosystem flag is set to No, this field is disabled and forced to No. It is freely selectable in all other cases.
[...]	

Submit	This function enables the user to create or edit a Party Service Link. Reference for error message <input type="checkbox"/> : <ul style="list-style-type: none"> <input type="checkbox"/> DPC4001 <input type="checkbox"/> DPC4002 [...] <input type="checkbox"/> DPU4019 <input type="checkbox"/> DPU4020 <input checked="" type="checkbox"/> DPU4022
--------	--

[...]

CRDM UHB-chapter 2.3.4.5 Report Configurations – Search/List Screen, page 232

Report Configuration – Search Criteria	
[...]	
Event Type Code	<p>Enter the code of the event type that triggers the report. Reference for error message []:</p> <p>↓ DRDV006 ↓ DRDV155</p> <p>This field is enabled if the Service is different from TIPS. Required format is: max. 4x characters.</p>
[...]	
Owner Parent BIC	<p>Enter or select the Parent BIC of the interested report. Reference for error message []:</p> <p>↓ DRDV004 ↓ DRDV155</p> <p>This field is enabled if the Service is different from TIPS. Required format is: max. 11x characters.</p>
Owner Party BIC	<p>Enter or select the Party BIC of the interested report. Reference for error message []:</p> <p>↓ DRDV004 ↓ DRDV155</p> <p>This field is enabled if the Service is different from TIPS. Required format is: max. 11x characters.</p>
Cash Account Number	<p>Enter the Cash Account for which the report has been subscribed. This field is enabled if the Service is different from TIPS. Required format is: max. 34x characters. Reference for error message []: ↓ DRDV155</p>

Report Configuration – List	
[...]	
Event Type	Shows the code of the event type that triggers the report. Reference for error message [□]: DRDV006 DRDV155
[...]	
Parent BIC	Shows the Parent BIC of the interested report. Reference for error message [□]: DRDV004 DRDV005 DRDV155
Party BIC	Shows the Party BIC of the interested report. Reference for error message [□]: DRDV004 DRDV005 DRDV155
[...]	
Cash Account Number	Shows the cash account for which the report has been subscribed. Reference for error message [□]: DRDV155

[...]	
Restore	This function enables the user to restore the selected Report Configuration. If the status of the selected Report Configuration is already set to 'Active', this function is not available. Reference for error message [□]: DRDV001 DRDV004 [...] DRDV110 DRDV120 DRDV155
[...]	

CRDM UHB-chapter 2.3.4.6 Report Configuration – Details Screen, page 238

Report Configuration	
[...]	
Owner Parent BIC	Shows the parent BIC of the party which owns the Report Configuration. Reference for error message [□]: DRDV004 DRDV155

Owner Party BIC	Shows the BIC of the party which owns the Report Configuration. Reference for error message [□]: DRDV004 DRDV155
[...]	
Cash Account Number	Shows the cash account for which the report has been subscribed. <u>Reference for error message [□]:</u> DRDV155

Report Configuration Party Link	
Parent BIC	Shows the parent BIC of the party entitled to receive the report. Reference for error message [□]: DRDV005 DRDV155
Party BIC	Shows the BIC of the party entitled to receive the report. Reference for error message [□]: DRDV005 DRDV155
[...]	
Event Type Code	Shows the code of the event type that triggers the report. <u>Reference for error message [□]:</u> DRDV155
[...]	

[...]	
Restore	This function enables the user to restore the displayed Report Configuration. If the status of the displayed Report Configuration is already set to 'Active', this function is not available. Reference for error message [□]: DRDV001 DRDV004 [...] DRDV110 DRDV120 DRDV155
[...]	

CRDM UHB-chapter 2.3.4.7 Report Configuration – New/Edit Screen, page 242

Report Configuration	
Owner Parent BIC	Enter or select the parent BIC of the party which owns the report. In T2 CLM COMPONENT/T2 RTGS COMPONENT, this field is mandatory if Cash Account Number is not used. It is not allowed otherwise. This field is read-only in edit mode. Reference for error message [□]: DRCV004 DRCV155 DRUV001 DRUV155 Required format is: max. 11x characters.

Owner Party BIC	<p>Enter or select the BIC of the party which owns the report. In T2 CLM COMPONENT/T2 RTGS COMPONENT, this field is mandatory if Cash Account Number is not used. It is not allowed otherwise. In case the user belongs to a payment bank, The field is read-only. This field is read-only in edit mode. Reference for error message []: DRCV004 DRCV155 DRUV001 DRUV155 Required format is: max. 11x characters.</p>
Cash Account Number	<p>Enter or select the Cash Account for which the report has to be subscribed. This field is mandatory if Parent and Party BIC are not used. It is not allowed otherwise. This field is read-only in edit mode. This field is not allowed for TIPS. Reference for error message []: DRCV007 DRCV155 DRUV155 Required format is: max. 34x characters.</p>
[...]	

	<ul style="list-style-type: none"> ▮ DRCV150 ▮ DRCV155 ▮ DRUV001 ▮ DRUV003 [...] ▮ DRUV140 ▮ DRUV150 ▮ DRUV155
[...]	

CRDM UHB-chapter 4.3.2.56 Party Service Link – New/Edit Screen, page 595

Reference for error message	Field or Button	Error Text	Description
[...]			
DPU4022	<ul style="list-style-type: none"> ▮ Minimum Reserve Obligation field ▮ Submit button 	<ul style="list-style-type: none"> ▮ Invalid Minimum Reserve Obligation 	<ul style="list-style-type: none"> ▮ The Minimum Reserve Obligation cannot be set to "No" if there is any Cash Account owned by the linked Party for the relevant linked Service with Minimum Reserve Calculation set to TRUE.

CRDM UHB-chapter 4.3.2.57 Report Configuration – Search/List Screen, page 600

Reference for error message	Field or Button	Error Text	Description
[...]			
DRDV155	<ul style="list-style-type: none"> ▮ Owner Parent BIC field ▮ Owner Party BIC field ▮ Opting Parent BIC field ▮ Opting Party BIC field ▮ Event Type Code field ▮ Cash Account Number field ▮ Restore button 	<ul style="list-style-type: none"> ▮ Report Configuration Party Link already existing for Owner or Cash Account 	<ul style="list-style-type: none"> ▮ When performing a Report Configuration restore request for a T2_CLM or T2_RTGS report, there cannot be more than one existing Report Configuration Party Link on the same scope (i.e. Owner Party or Cash Account) for the same Opting Party and Event Type with overlapping validity period.

CRDM UHB-chapter 4.3.2.58 Report Configuration – Details Screen, page 602

Reference for error message	Field or Button	Error Text	Description
[...]			
DRDV155	<ul style="list-style-type: none"> ▮ Owner Parent BIC field ▮ Owner Party BIC field ▮ Opting Parent BIC field ▮ Opting Party BIC field ▮ Event Type Code field ▮ Cash Account Number field ▮ Restore button 	<ul style="list-style-type: none"> ▮ Report Configuration Party Link already existing for Owner or Cash Account 	<ul style="list-style-type: none"> ▮ When performing a Report Configuration restore request for a T2_CLM or T2_RTGS report, there cannot be more than one existing Report Configuration Party Link on the same scope (i.e. Owner Party or Cash Account) for the same Opting Party and Event Type with overlapping validity period.

CRDM UHB-chapter 4.3.2.59 Report Configuration – New/Edit Screen, page 604

Reference for error message	Field or Button	Error Text	Description
[...]			
DRCV125	<ul style="list-style-type: none"> Report Name field Submit button 	Invalid fields for T2 reports.	When performing a Report Configuration creation request, if a T2_CLM or T2_RTGS Report is selected as Report Name, the System Entity Wide flag must be set to FALSE. Furthermore the Currency <u>and the Execution Time</u> fields must not be used.
[...]			
DRCV155	<ul style="list-style-type: none"> Owner Parent BIC field Owner Party BIC field Opting Parent BIC field Opting Party BIC field Event Type Code field Cash Account Number field Submit button 	Report Configuration Party Link already existing for Owner or Cash Account	When performing a Report Configuration creation request for a T2_CLM or T2_RTGS report, there cannot be more than one existing Report Configuration Party Link on the same scope (i.e. Owner Party or Cash Account) for the same Opting Party and Event Type with overlapping validity period.
[...]			
DRUV155	<ul style="list-style-type: none"> Owner Parent BIC field Owner Party BIC field Opting Parent BIC field Opting Party BIC field Event Type Code field Cash Account Number field Submit button 	Report Configuration Party Link already existing for Owner or Cash Account	When performing a Report Configuration update request for a T2_CLM or T2_RTGS report, there cannot be more than one existing Report Configuration Party Link on the same scope (i.e. Owner Party or Cash Account) for the same Opting Party and Event Type with overlapping validity period.

88 EUROSYSYSTEM UPDATE [CSLD SDD-CN-PBR-0079]: page 567 (CRDM UHB-chapter 4.3.2.50 Message Subscription Rule – New/Edit Screen) page 562 (CRDM UHB-4.3.2.48 Message Subscription Rule Set – Details)

SDD-CN-PBR-079 is not yet approved.

Amendment of Business rules DRCF300, DRCF310, DRUF300, DRUF310, DRDF300, DRDF310
--

CRDM UHB-chapter 4.3.2.50 Message Subscription Rule – New/Edit Screen, page 604

Reference for error message	Field or Button	Error Text	Description
[...]			
DRCF300	<ul style="list-style-type: none"> Group field Submit button 	Number of maximum active Message Subscription Rule exceeded	When performing a Message Subscription Rule create request <u>within a T2S Rule Set</u> , the overall number of groups of parameters for the relevant CSD/CB must be compliant with the configuration limit defined in CRDM.
DRCF310	<ul style="list-style-type: none"> Submit button 	Number of maximum	When performing a Message Subscription Rule create request <u>within a T2S Rule Set</u> ,

		Parameter Values exceeded	the overall number of distinct Parameter Values defined for the same Parameter Type for the relevant CSD/CB must be compliant with the configuration limit defined in CRDM.
[...]			
DRUF300	<ul style="list-style-type: none"> Group field Submit button 	Number of maximum active Message Subscription Rule exceeded	When performing a Message Subscription Rule update request <u>within a T2S Rule Set</u> , in case of creation of Message Subscription Rule Parameter, the overall number of groups of parameters for the relevant CSD/CB must be compliant with the configuration limit defined in CRDM.
DRUF310	<ul style="list-style-type: none"> Submit button 	Number of maximum Parameter Values exceeded	When performing a Message Subscription Rule create request <u>within a T2S Rule Set</u> , in case of creation/update of Message Subscription Rule Parameter, the overall number of distinct Parameter Values defined for the same Parameter Type for the relevant CSD/CB must be compliant with the configuration limit defined in CRDM.

CRDM UHB-chapter 4.3.2.48 Message Subscription Rule Set – Details, page 604

Reference for error message	Field or Button	Error Text	Description
DRDF300	<ul style="list-style-type: none"> Restore button 	Number of maximum active Message Subscription Rule exceeded	When performing a Message Subscription Rule restore request <u>within a T2S Rule Set</u> , the overall number of groups of parameters for the relevant CSD/CB must be compliant with the configuration limit defined in CRDM.
DRDF310	<ul style="list-style-type: none"> Restore button 	Number of maximum Parameter Values exceeded	When performing a Message Subscription Rule restore request <u>within a T2S Rule Set</u> , the overall number of distinct Parameter Values defined for the same Parameter Type for the relevant CSD/CB must be compliant with the configuration limit defined in CRDM.