



EUROPEAN CENTRAL BANK

EUROSYSTEM

NEW ECB PREMISES PROJECT OFFICE

**ECB-UNRESTRICTED**

4 August 2014

**NEW ECB PREMISES**

**ARCHITECTURAL DESIGN COMPETITION**

**DESIGN PROPOSALS**  
**(SECOND PHASE)**

101

**Murphy/Jahn, Inc.**

Chicago, United States

Helmut Jahn

The architectural concept consists of two 35-storey high curved towers that are connected to form a core to the south-east of the Grossmarkthalle. The towers create a vertical counterpoint to the horizontal plane of the Grossmarkthalle. The curved towers open out towards the entrance drive and the river, maximising the views both to and from the towers. The Grossmarkthalle is preserved and remains fully visible from the Sonnemannstrasse. The design concept of the second phase differed significantly from the outline concept of the first phase, which consisted of two parallel slabs cantilevered above the Grossmarkthalle to unite the Grossmarkthalle and the river without destroying the autonomy of this historic building.



107

**tp Bennet**

London, United Kingdom

Richard Beastall, Christopher Bennie

D. Granville Smith, William Soper

This concept draws on construction-related measures and innovative energy solutions to create an appropriate and comfortable working environment. The landscape is incorporated into the overall design concept: the low-rise buildings are modelled and sloped to create a variety of interesting spaces.

The growth modules for possible future expansion are well integrated into this concept in the form of two additional towers of different heights in the south-west. The Grossmarkthalle is well preserved.



120

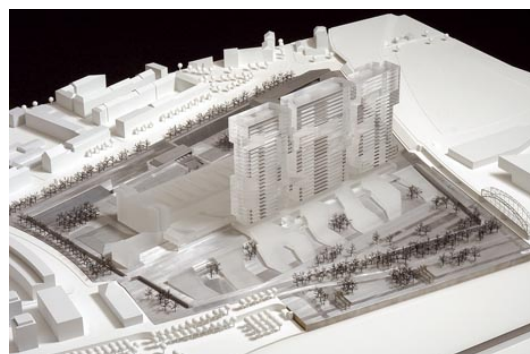
**Barkow Leibinger Architekten**

Berlin, Germany

Regine Leibinger

Frank Barkow

The concept of a 29-storey slab south of, and parallel to, the Grossmarkthalle with openings or "sky cuts" creates a strong image without overwhelming the Grossmarkthalle. The unique void spaces between the different components of the building allow the large volume to interact with the surrounding neighbourhood: these open areas are designed as gardens symbolising the EU Member States. The Grossmarkthalle is well preserved. Overall the concept seems to be promising in terms of design.

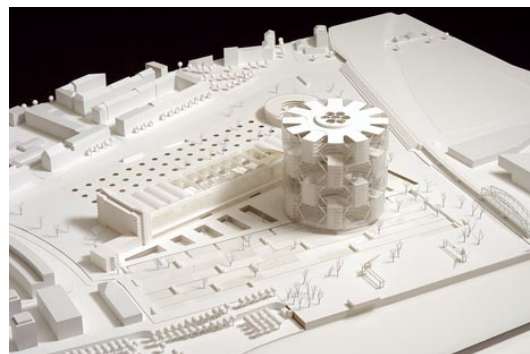


124

**Schneider + Schumacher  
Architekturgesellschaft mbH**

Frankfurt am Main, Germany  
Till Schneider  
Michael Schumacher

The new building, a 25-storey cylindrical tower, forms a dialogue with the Grossmarkthalle, which should be preserved in its original state as far as possible. The growth modules for possible future expansion are created by adding new storeys above the initially constructed building. Within the tower itself, interesting garden spaces will allow for both high-quality working spaces and social areas. Due to the compactness of the cylinder, much of the site is not developed and a large area is allotted for green space.

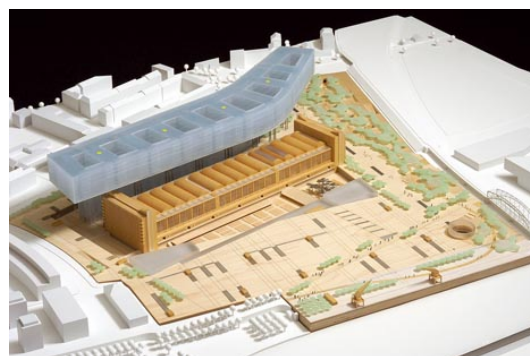


133

**Estudio Lamela S.L**

Madrid, Spain  
Carlos Lamela de Vargas

The new building is located between the Grossmarkthalle and Sonnemannstrasse to link the immediate neighbourhood with the ECB's premises. Although the north façade of the Grossmarkthalle will be shielded from the Sonnemannstrasse, the concept respects "history, existing culture and its collective memory".

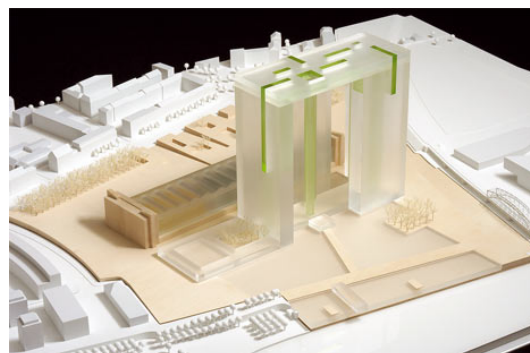


140

**ASP Schweger Assoziierte,**

Berlin, Germany

The hovering "sky bridge" contrasts with the Grossmarkthalle without overwhelming this historic building. The Grossmarkthalle is well preserved though its roof is replaced by a glass construction. This innovative concept will create an exhilarating effect with the vertical buildings connected through an entrance plaza and the elevated plane. The growth module for possible future expansion is an additional tower.

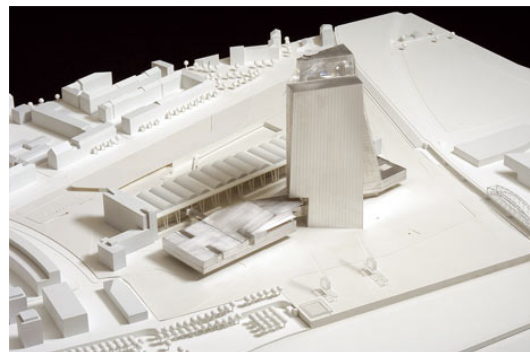


145

**Coop Himmelb(l)au,**  
Vienna, Austria

This concept has an intelligent combination of old and new in a sculptural form. The ensemble is formed from three basic elements: the Grossmarkthalle, a “groundscraper” and polygonal twin towers. In the outline concept for the first phase, the “groundscraper” cantilevered over the river walk and cut through the Grossmarkthalle.

Now, in the second phase, it runs parallel to the Grossmarkthalle leaving the historic building untouched. The Grossmarkthalle serves as the ECB’s main entrance and public area, and is linked to the two office towers by the conference centre in the “groundscraper”. The concept is concise and functional.



152

**Frank O. Gehry Associates**  
Los Angeles, United States  
Frank O. Gehry

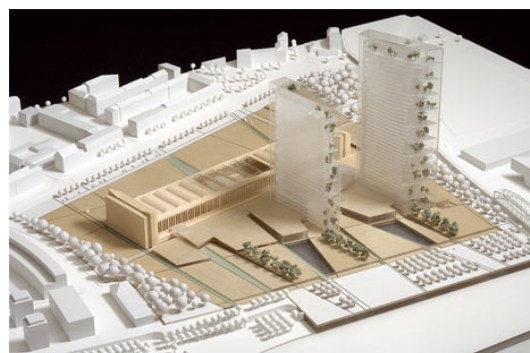
The jury found that the original “village” concept for a small-scale cluster of buildings along the Main river was an original response to the given programme. A transparent roof will cover a large part of the site to form a kind of “European umbrella”. Mid-rise buildings will create an animated skyline above the roof. The “Grossmarkthalle represents the public façade of the ECB” and is treated as a “found object” framed by water basins and large transparent roofs sloping gently towards the historic building.



157

**54f architekten / T. R. Hamzah & Yeang,**  
Darmstadt, Germany / Selangor, Malaysia

The design concept extends the urban axes into the site, using them to create different landscapes and architectural elements. Two different high-rise slabs will be placed to the south of the Grossmarkthalle to “enrich the existing shape of the city”. The open space concept is highly developed. High-quality workplaces take account of energy and environmental considerations. The design concept makes good use of the site and the proportions of the new buildings do not overwhelm the Grossmarkthalle. The concept integrates well with the neighbourhood, incorporating many requirements of the functional programme.



159

**Morphisis**

Santa Monica, United States

Thom Mayne

The vibrant connection between the towers and the Grossmarkthalle is a successful way of integrating the whole ensemble into the surroundings. The four sculpturally designed slabs of different heights are linked perpendicularly to the southern front of the Grossmarkthalle, based on a landscaped platform, to create a “campus of integrated pieces”. The plateau and water areas separate the site from the urban surroundings. This concept has an interesting design idea while incorporating many aspects of the functional programme.



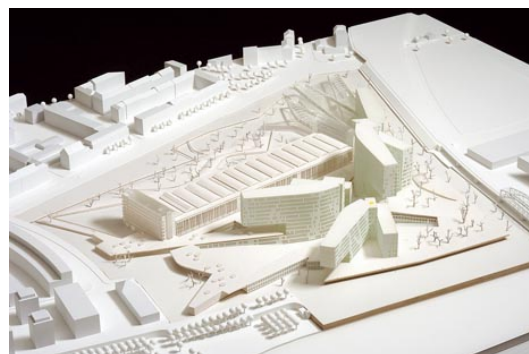
163

**Enric Miralles Benedetta Tagliabue**

Barcelona, Spain

Benedetta Tagliabue

The three v-shaped buildings with a single function, located to the south of the Grossmarkthalle, will connect at the lower levels. The concept is “the bank as the market place”. The location and direction of the buildings follow the flow of the green belt on the site. The Grossmarkthalle will be fully preserved in structure and appearance. The concept forms a comprehensive approach that successfully integrates the landscape, the Grossmarkthalle and the surrounding neighbourhood.



168

**KHR arktekte AS**

Virum, Denmark

Peter Leuchsenring

This flat-roofed form is considered to be modest and sophisticated and brings together the new premises and the Grossmarkthalle. The “European envelope” will consist of a glass roof and facade that will cover the Grossmarkthalle and low-rise office buildings; the new premises contrast with the skyscrapers of Frankfurt’s financial district. The landscape concept will allow many connections between external and internal spaces while opening up towards the river. The concept revolves around a transparency with “no barriers between the inside and outside”.

