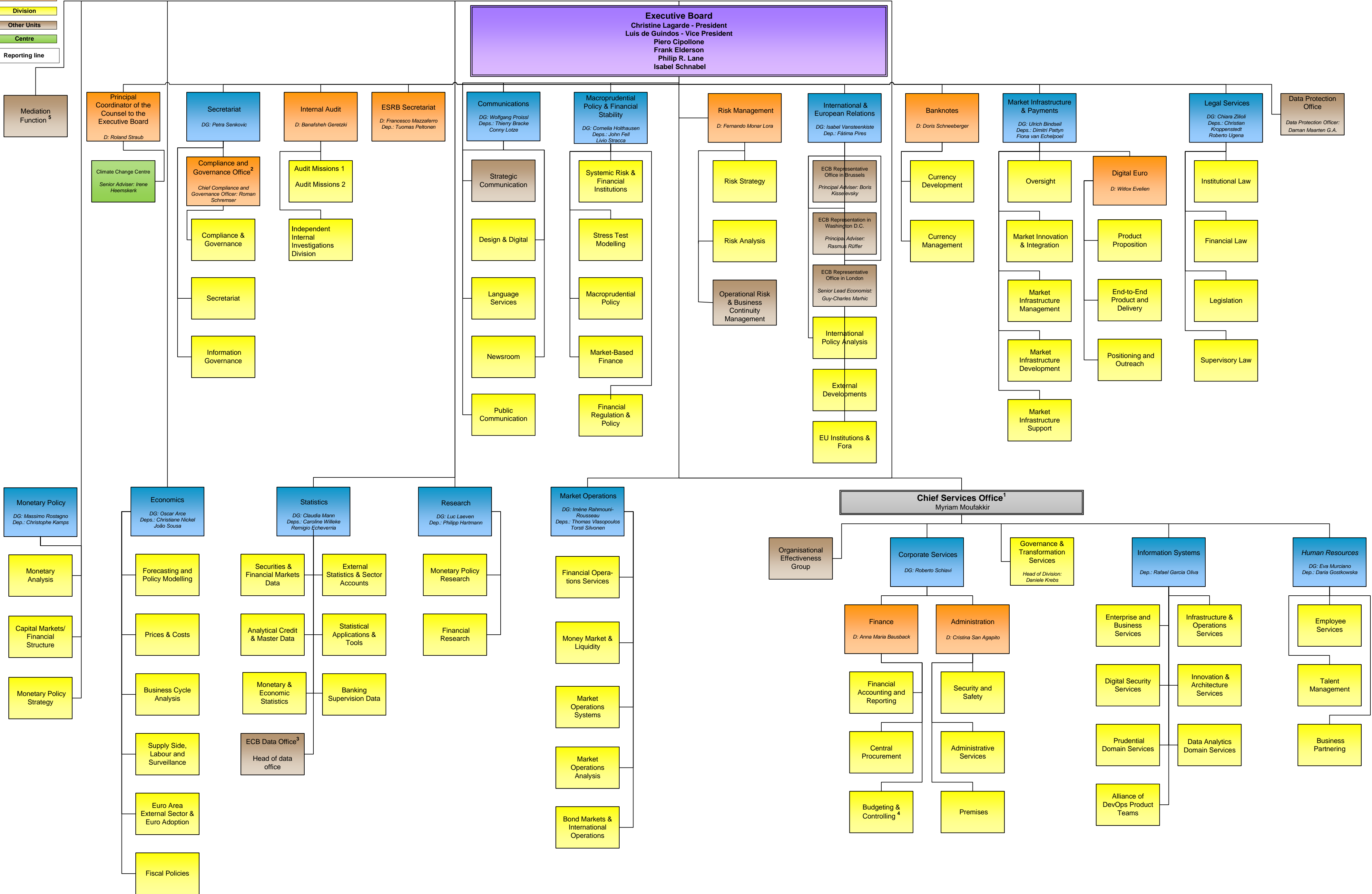


ECB Organigramme



¹ The CSO reports to the Executive Board via the President

² On compliance-related matters the Chief Compliance and Governance Officer reports directly to the President

³ The Data Office reports to the Chief Data Officer, position assumed by DG Statistics

⁴ BCO will report via their senior management to Executive Board

⁵ The Mediator reports to the President in a non-hierarchical way

Supervisory Board

Directorate General

Directorate

Division

Reporting line

DG= Director General

D= Director

Dep./Depts.= Deputies

ECB Organigramme

