

SISTEMA ELETTRONIKA TAL-BĊE GĦALL-OFFERTI KIF TIBGĦAT TWEĠIBA FI PROĊEDURA TAL-AKKWIST ("RFx")

Biex tibgħat tweġiba fi proċedura tal-akkwist (e.g. Offerta/Proposta (mibdula), Espressjoni ta' Interess jew Applikazzjoni) fis-sistema elettronika tal-BĊE għall-offerti (SAP Sourcing), jekk jogħġbok imxi mal-passi li ġejjin.

Tista' tkompli tagħmel tibdil sa ma tibgħat it-tweġiba finali tiegħek.

Werrej

I.	Suggerimenti tekniċi	2
II.	Għajnuna	2
III.	Ħarsa ġenerali lejn l-akkwisti	2
IV.	Aċċess għad-dokumentazzjoni tal-akkwisti	5
V.	Kif ittella' d-dokumenti	6
VI.	Komunikazzjoni mal-BĊE	9
VII.	Kif tibgħat id-dokumenti finali	10

I. Suggerimenti tecnici


- Tiftaħx iżjed minn tab jew window waħda fis-SAP Sourcing għax toħroġ awtomatikament mit-tab jew window li tkun ftaħt l-aħħar u tista' titlef l-informazzjoni li tkun daħħalt.
- Tużax il-buttuna *Refresh* jew *Back* tal-brawżer tiegħek għax toħroġ awtomatikament mit-tab jew window li tkun ftaħt l-aħħar.
- Meta tikklikkja *Save*, is-sistema turik twissijiet bl-aħmar jekk ma tkunx daħħalt l-informazzjoni kollha mitluba. Jekk ma jkun hemm xejn nieqes, is-sistema tissejvja l-informazzjoni. Infeġguk tikklikkja *Save* kull tant żmien.
- Meta tikklikkja *Done*, is-sistema tissejvja u tagħlaq l-informazzjoni li tkun daħħalt.

II. Għajnuna

Jekk għandek mistoqsijiet jew tixtieq iżjed tagħrif, ikkuntattja lit-tim tal-assistenza hawn sourcing.support@ecb.europa.eu, bejn it-Tnejn u l-Ġimgħa, 08:30-17:30 CET.

III. Farsa ġenerali lejn l-akkwisti

1. Illoggja fis-sistema bil-*user ID* u l-*password*.



User *
 Password *
 Log On
 Logon Problems? [Get Support](#)

Copyright © SAP AG. All Rights Reserved. 

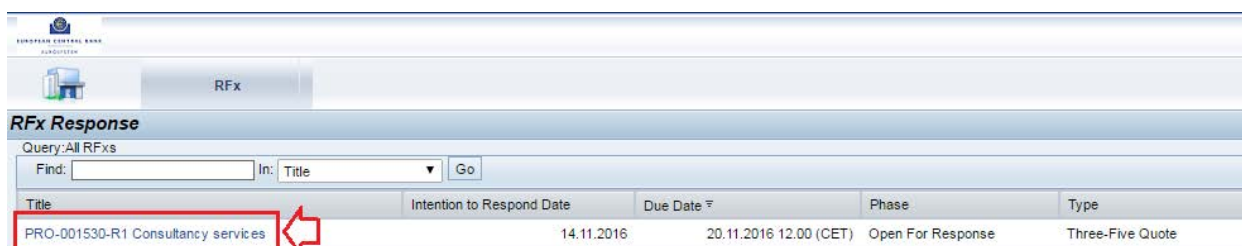
Jekk ikollok problemi biex tilloggja fis-sistema, ara l-gwida “*Sistema elettronika tal-BĊE għall-offerti – Kif tibdel il-password tal-fornitur*”.

2. Fl-ewwel paġna, klikkja t-tab “RFx”.

It-terminu “RFx” (“Request For x”) jirreferi għal kwalunkwe talba biex tibgħat twegiba lill-BĊE fi proċedura tal-akkwist.



3. Klikkja l-RFx li għalih tixtieq tibgħat offerta (“RFx Response”).



L-isem ta' RFx huwa mibni kif ġej: [Project ID]-[L għal Lot u n-numru tal-Lot, jekk ikun il-każ]-[R għal Round u n-numru tar-Round]-[isem il-proċedura fil-qosor].

Ir-Round jirreferi għal fażi ġdida fil-proċedura tal-akkwist, e.g. b'nal meta tintbagħat offerta mibdula wara negozjati. Dan ifisser li għal kull fażi ta' proċedura tal-akkwist (i.e. Applikazzjoni, Offerti u Negozjati) tiġi pubblikata RFx ġdida fis-SAP Sourcing. Hekk, jekk proċedura tinkludi negozjati, int titalab tibgħat l-offerta mibdula tiegħek f'RFx ġdida.

Tirċievi *email* li tgħarrfek meta RFx ġdida tkun disponibbli għall-attenzjoni tiegħek.

4. Klikkja "Rfx Response" ID (*unique identifier*).

RFx


Back Rfx Response > PRO-001530-R1 Consultancy services

Displaying: Rfx RFX-35Q-2016-000001: PRO-001530-R1 Consultancy services Full Screen

ID: RFX-35Q-2016-000001
Title: PRO-001530-R1 Consultancy services
 Description:
 Current Phase: Open For Response
 Company: European Central Bank
 Contact: Natalia Pekala
 Rfx Response Due Date: 20.11.2016 12.00 (CET)
 Relevant Procurement: Consultancy
 Lot: No Lots

RFx Responses

RFx Response	Internal RFx Response ID	Cover Page Comments	RFx Response Status	Intend to Respond
PROP-2016-00000034			No Activity	<input type="checkbox"/> Intention to respond



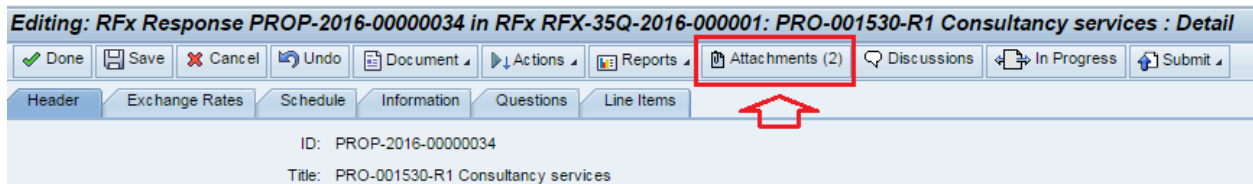
Schedule Items

Display Name	Planned Start	Description
RFx Response Due	20.11.2016	The RFx response is due shortly. Make your final changes and set the response status to Firm.

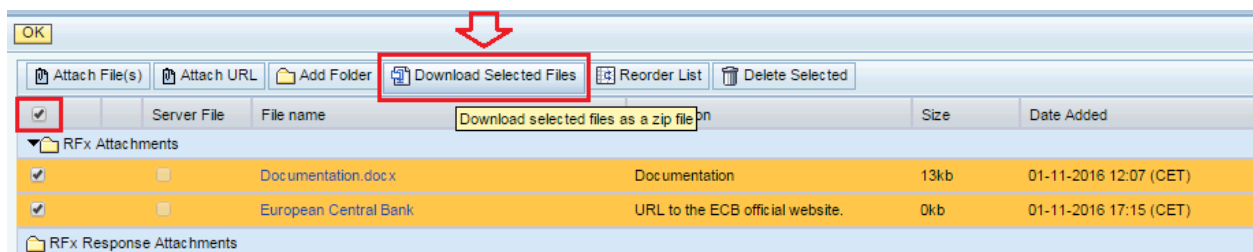
IV. Aċċess għad-dokumentazzjoni tal-akkwisti

1. **Niżżel** l-*attachments* li jipprovdi l-BĊE.

a) Klikkja “Attachments”.

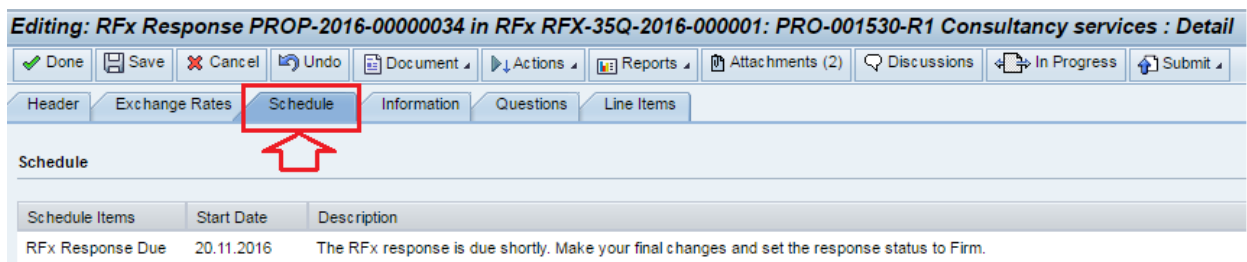


b) Agħżel il-fajls u klikkja “Download Selected Files”.

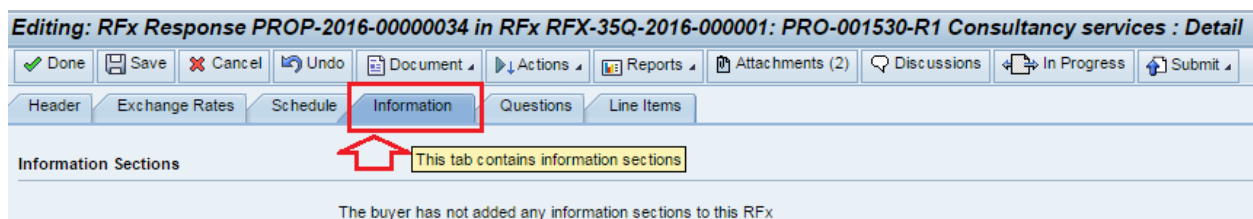


2. Id-**data tal-għeluq biex tibgħat** id-dokumentazzjoni tidher fit-tab “Schedule”.

L-RFX tagħlaq awtomatikament meta tiskadi d-data tal-għeluq. Jiġu kunsidrati biss mill-BĊE t-tweġibiet RFX li jintbagħtu bl-istatus “Firm” qabel id-data tal-għeluq. It-tweġibiet RFX bl-istatus “In Progress” li ma jkunux intbagħtu qabel id-data tal-għeluq ma jiġux kunsidrati.



3. Kull **tagħrif ieħor** provdut mill-BĊE jidher fit-tab “Information”.

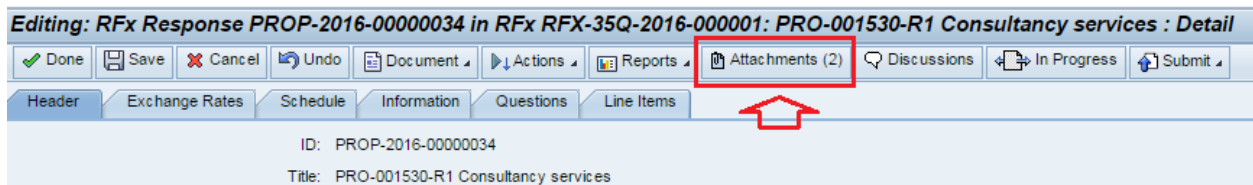


V. Kif ittella' d-dokumenti

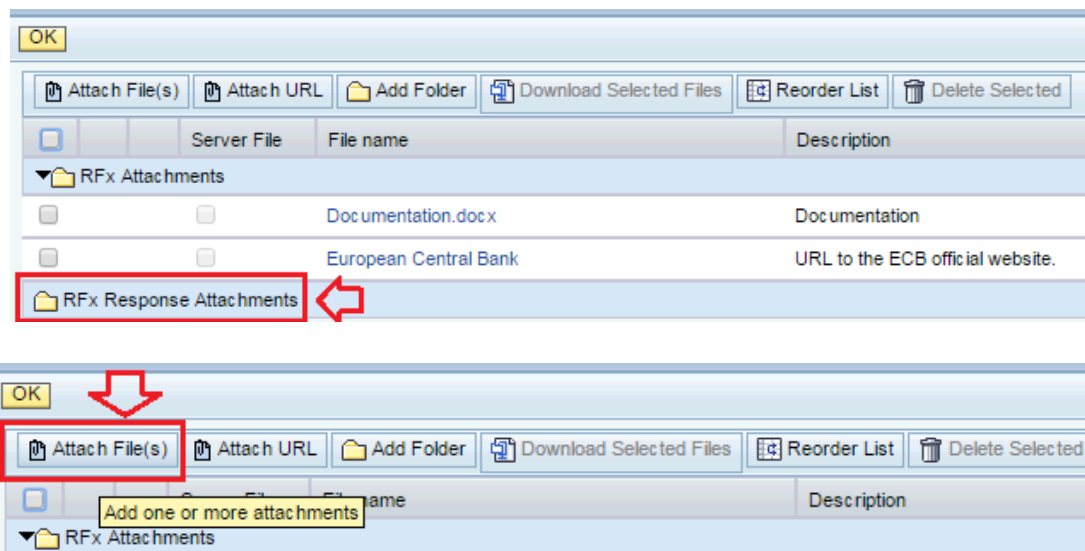
1. **Tella'** d-dokumenti li jridu jintbagħtu lill-BĊE.

Jekk ikollok problemi biex ittella' d-dokumenti tiegħek, ikkuntattja lit-tim tal-assistenza permezz ta' email: sourcing.support@ecb.europa.eu.

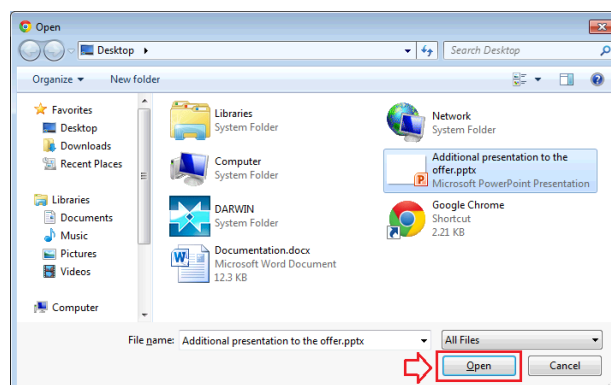
- a) Klikkja "Attachments".



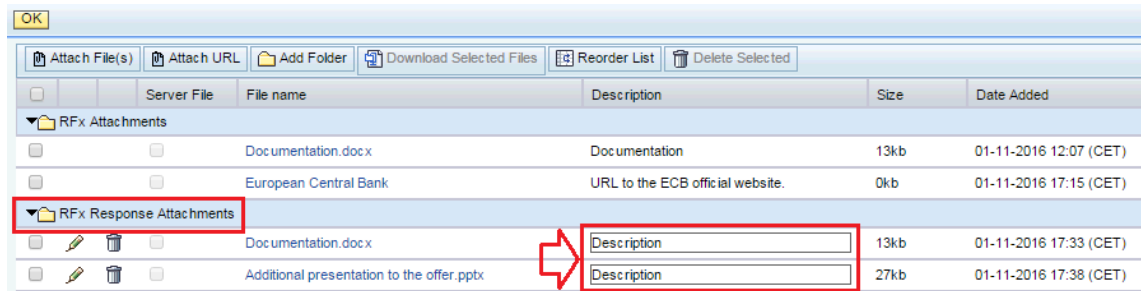
- b) Taħt "Rfx Response Attachments", klikkja "Attach File(s)".



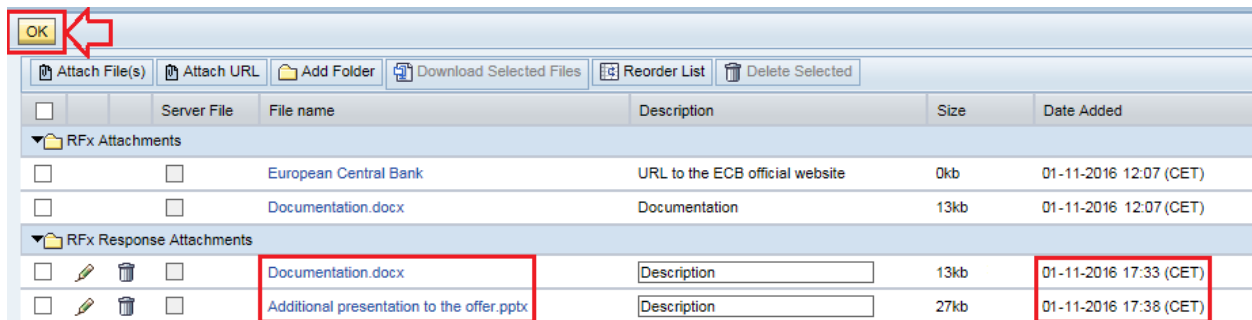
- c) Sib il-fajl(s) li trid ittella', imbagħad klikkja "Open".



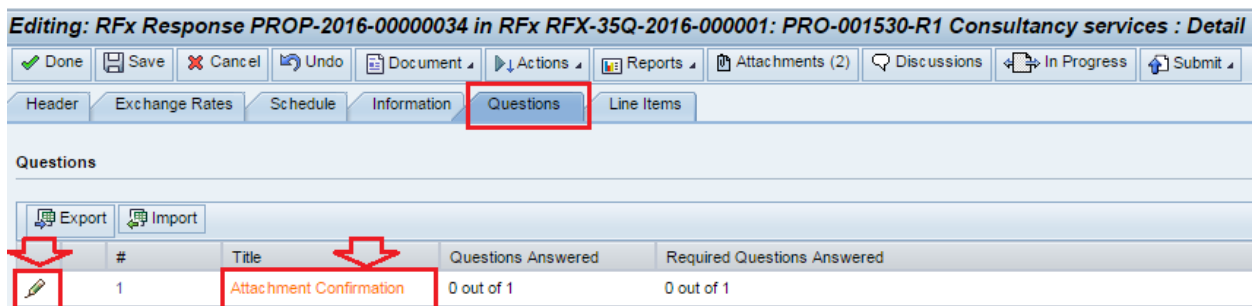
d) Jekk ikun mefġieg, žid deskrizzjoni tal-fajl(s).



e) Meta tkun židt il-fajls kollha, klikkja **OK** fir-rokna ta' fuq tax-xellug.



f) Wara li ttella' d-dokumentazzjoni kollha, mur fit-tab "Questions" u klikkja "Attachment Confirmation".



g) Wieġeb il-mistoqsija, imbagħad klikkja **Done**.

Editing: Questions Section : Attachment Confirmation

Done Save Cancel Undo

Description:

Questions Answered: 0 out of 1
Required Questions Answered: 0 out of 1

1.1 Default Questions Group

1.2 Copy of Default Questions Group

1.2.1

🗨 We'll have uploaded documentation under "Attachments" and we are ready to submit the response.

*

No Answer
 Yes
 No

Additional Info:

0 of 1000 characters

VI. Komunikazzjoni mal-BĊE

Biex tikkomunika mal-BĊE, klikkja “Discussions”. Il-BĊE jwieġeb il-mistoqsijiet hawnhekk, mhux bil-posta elettronika.

Jekk ikollok mistoqsija ta' natura teknika, ibgħat email lil sourcing.support@ecb.europa.eu u tużax il-forum “Discussions”.

Editing: RFX Response PROP-2016-00000034 in RFX RFX-35Q-2016-000001: PRO-001530-R1 Consultancy services : Detail

Done Save Cancel Undo Document Actions Reports Attachments (2) Discussions In Progress Submit

Header Exchange Rates Schedule Information Questions Line Items

ID: PROP-2016-00000034
 Title: PRO-001530-R1 Consultancy services
 RFX Description:
 Current phase of RFX: Open For Response
 Customer Company: European Central Bank
 Contact Person: Natalia Pekala
 Internal RFX Response ID:

- a) Biex iddañħal mistoqsija/kumment fil-forum “Discussions”, klikkja s-suġġett rilevanti (e.g. “General Discussions”).

Discussions

Refresh

Msg	Topic/Subject Name	Last Posting	Author	Company	Visibility	Subscribed
<input type="checkbox"/>	General Discussions (0 Unread Messages)				Internal Users and External Users	
<input type="checkbox"/>	Q&A (0 Unread Messages)				Internal Users and External Users	

- b) Biex iddañħal messaġġ ġdid, klikkja “New Message”, žid Suġġett u Kontenut, imbagħad klikkja OK.

Subjects

New Message Refresh

Msg	Subject	Last Posting	Author	Company	Visibility	Subscribed
	Create a new message					

* Subject:

* Content:

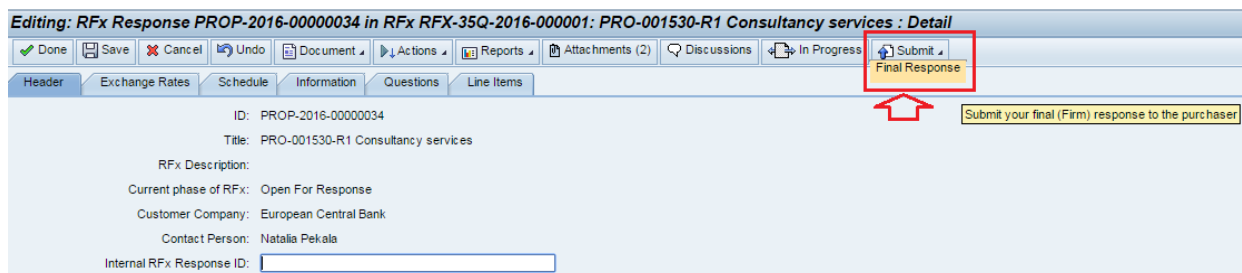
0 of 2000 characters

Attachment:

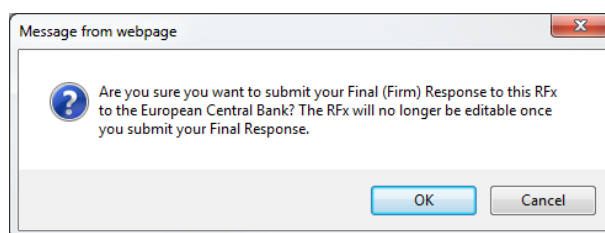
VII. Kif tibgħat id-dokumenti finali

1. Biex tibgħat id-dokumentazzjoni finali lill-BĊE, klikkja “Submit” imbagħad klikkja “Final Response”.

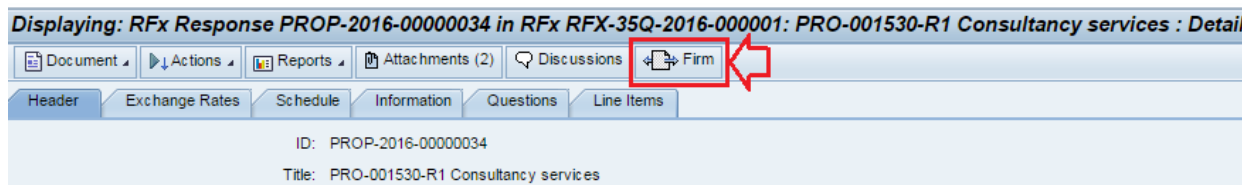
Ma tkun tista' tagħmel ebda tibdil wara li tibgħat it-tweġiba finali tiegħek.



2. Ikkonferma jekk tkunx tixtieq tibgħat it-Tweġiba Finali tiegħek lill-BĊE.



3. Meta tibgħatha, l-istatus jinbidel u jsir “Firm”. Tirċievi konferma bil-posta elettronika, li tinkludi struzzjonijiet oħra.



4. Biex tkun ċert li bgħatt it-tweġiba tiegħek tajjeb, jekk jogħġbok erga' idħol fit-tweġiba RFX tiegħek fis-sistema elettronika tal-BĊE għall-offerti u ċċekkja li l-kontenut huwa sħiħ u, b'mod partikolari, li l-*attachments* kollha li ridt ittella' huma inkluzi ikoll. Nagħtuk parir tiddokumenta t-tweġiba RFX finali tiegħek sħiħa li tkun tellajt, e.g. billi tiegħu *screenshot* tal-lista tal-*attachments* mat-Tweġiba RFX tiegħek.

Jekk ikun hemm żball fis-sottomissjoni finali tiegħek, ikkuntattja lit-tim tal-assistenza bil-posta elettronika: sourcing.support@ecb.europa.eu