



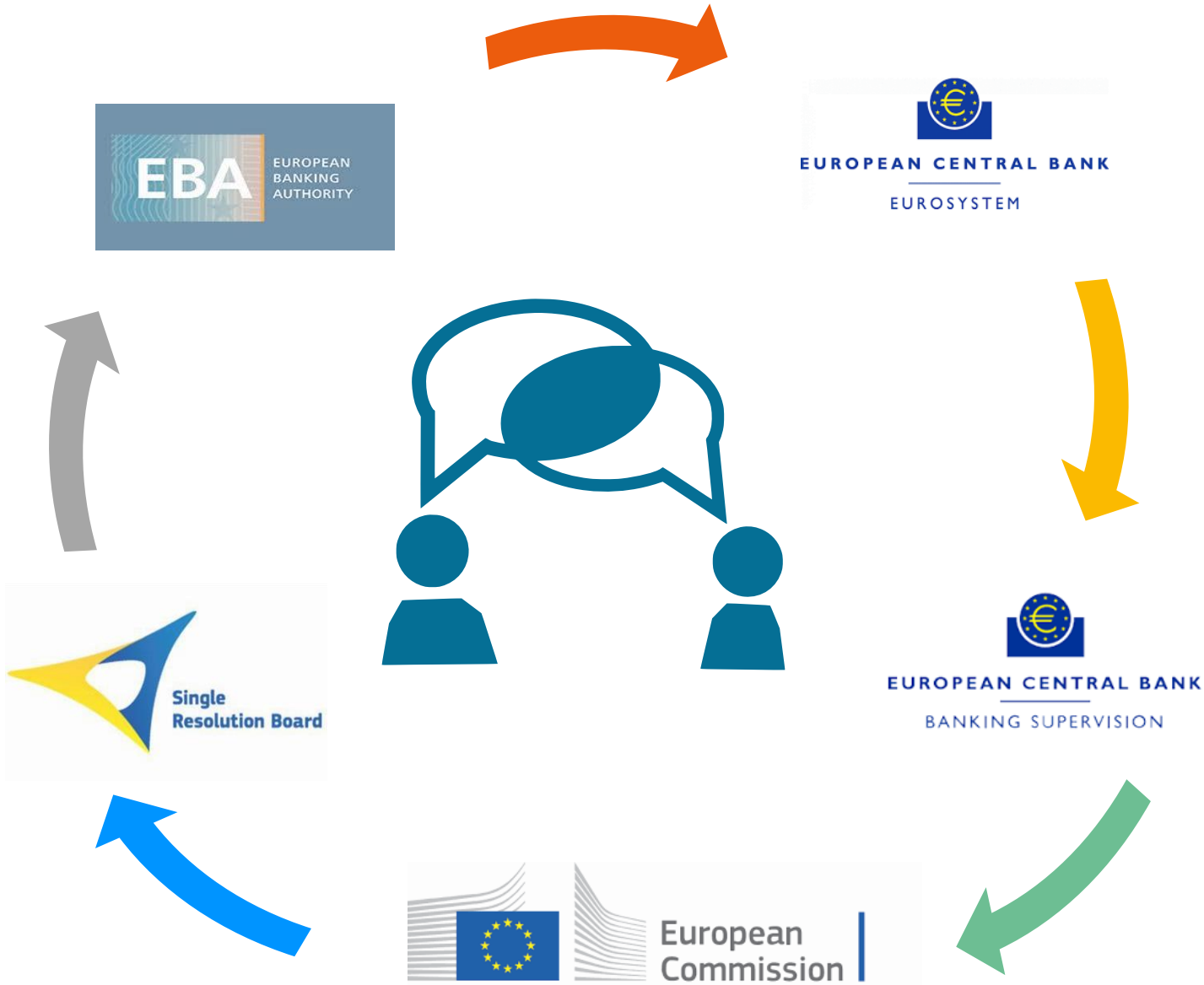
# Dialogue Meeting with the ESCB

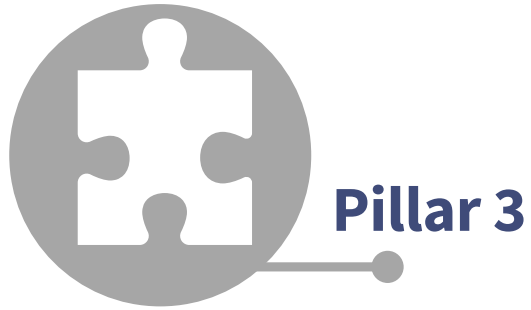
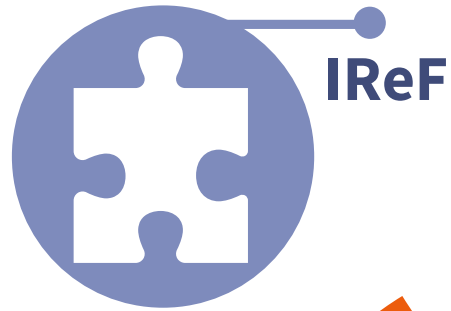
*The view by the industry*

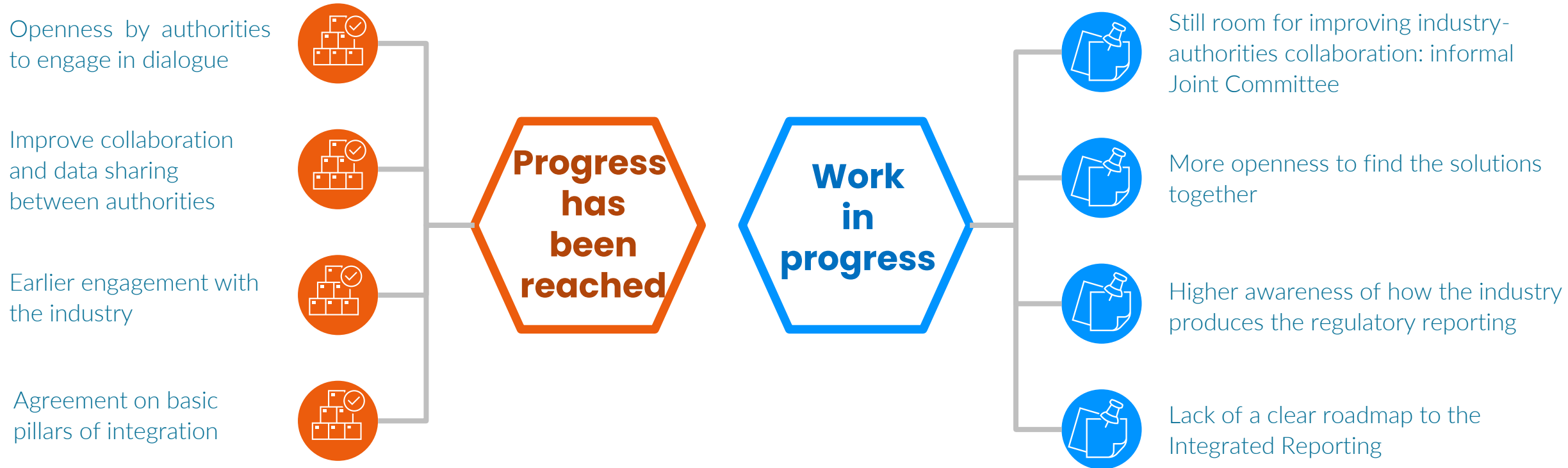
*21<sup>st</sup> June 2022*



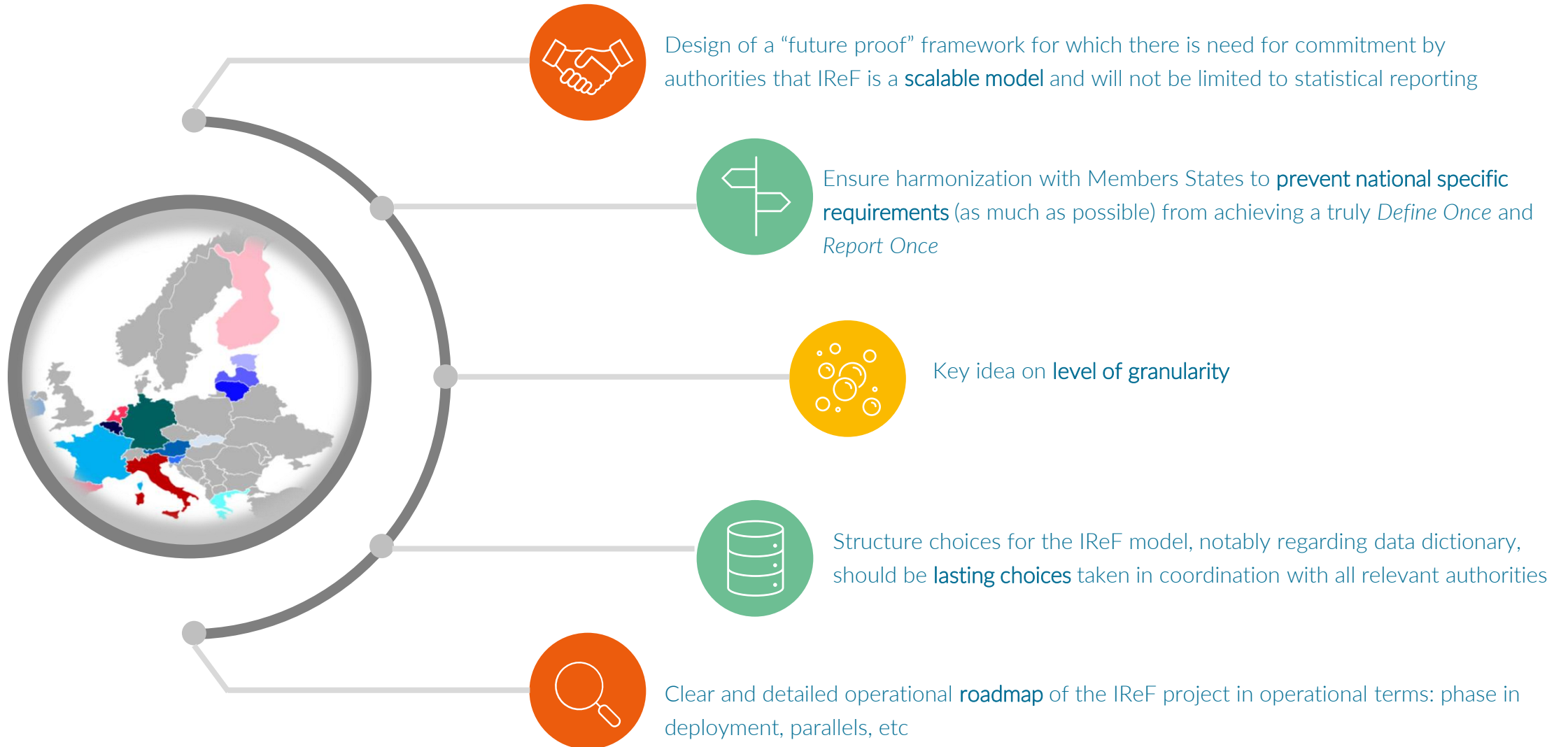
**BRUSSELS, 30 October 2018 – The European Banking Federation is calling on financial sector authorities in the European Union to create an integrated and standardized framework for data reporting in order to improve the quality of data while reducing the reporting burden.**



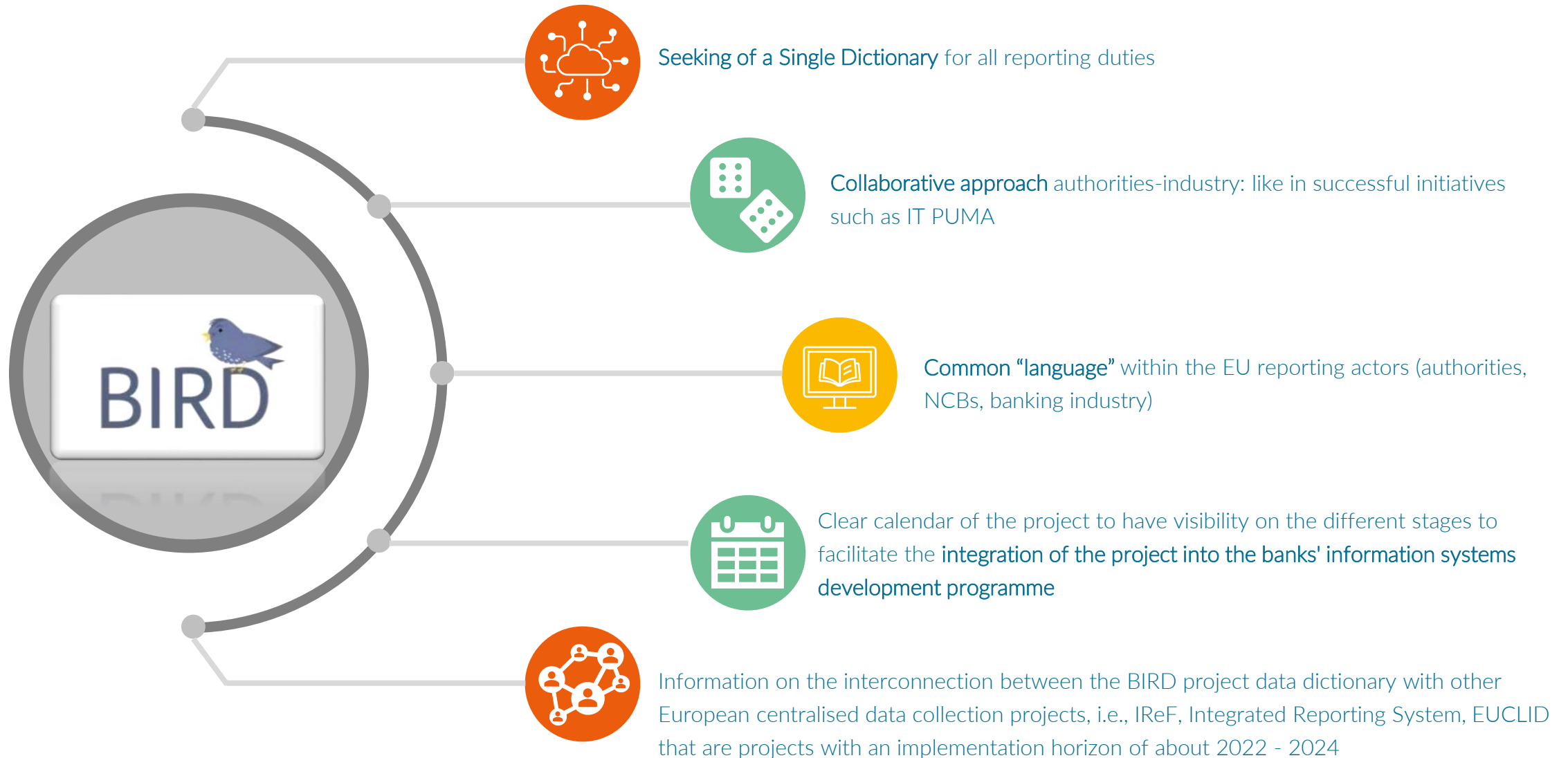




# INTEGRATED REPORTING FRAMEWORK (IReF)



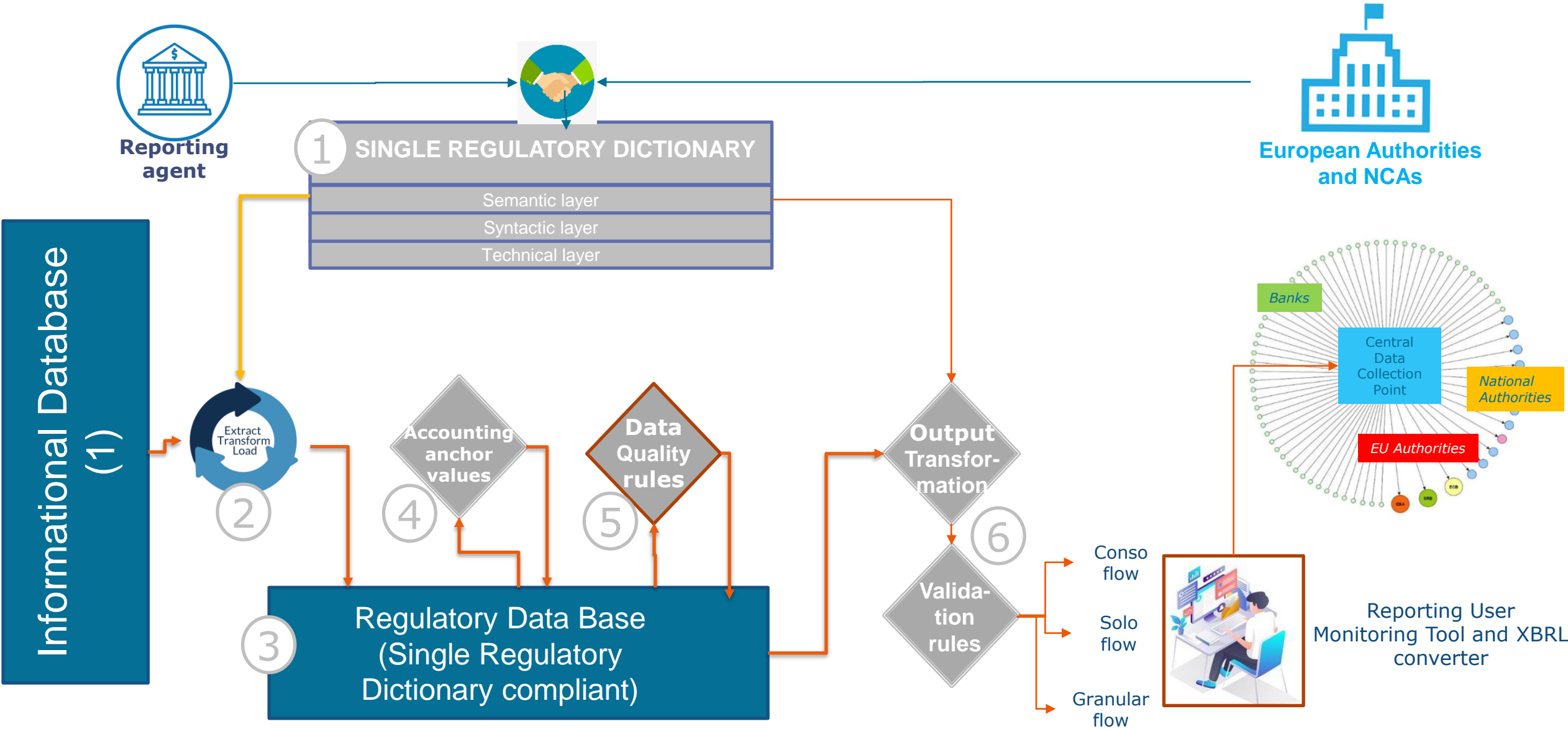
# BANKS' INTEGRATED REPORTING DICTIONARY (BIRD)



# INTEGRATED REPORTING SYSTEM (EBA FS)



# Banks internal reporting processes must be revamped echoing this integration initiatives



(1) This is the internal bank integrated TDS under own bank LDM and catalogs used for internal management for RISK and Finance



# Questions to be discussed

1

Single Regulatory Dictionary:

with business, metadata and technical definitions with a LDM agreed with the authorities.

Includes one (or many) output layer to draw the templates and datasets and DQ rules.

**Design how to implement this dictionary into bank's data architecture.**

2

ETL process:

transformation of the bank's informational database catalogs and LDM into SRD catalogs and LDM to create a Regulatory Data Base compliant with SRD.

3

Bank's SRD Regulatory Data Base:

SRD morphology and catalogs with all the data needed for all the regulatory reporting.

**New regulatory TDS.**

4

Anchor values:

treatment of accounting figures not available at granular level and mismatches between accounting figures and granular (aggregated) ones.

5

Data Quality rules at different levels:

internal DQ rules and authorities DQ rules.

**How to implement them, how to design meaningful DQi, etc.**

6

SRD dictionary should include an output layer to assign attributes and figures from the step 3 *Regulatory Data Base* to templates and final datasets. Final internal validation rules for every template or dataset before sending the info/data to the authorities.

**Aggregation rules and data allocation rules usable tool for reporting agents. Implementation of VRs and design last mile DQi.**